



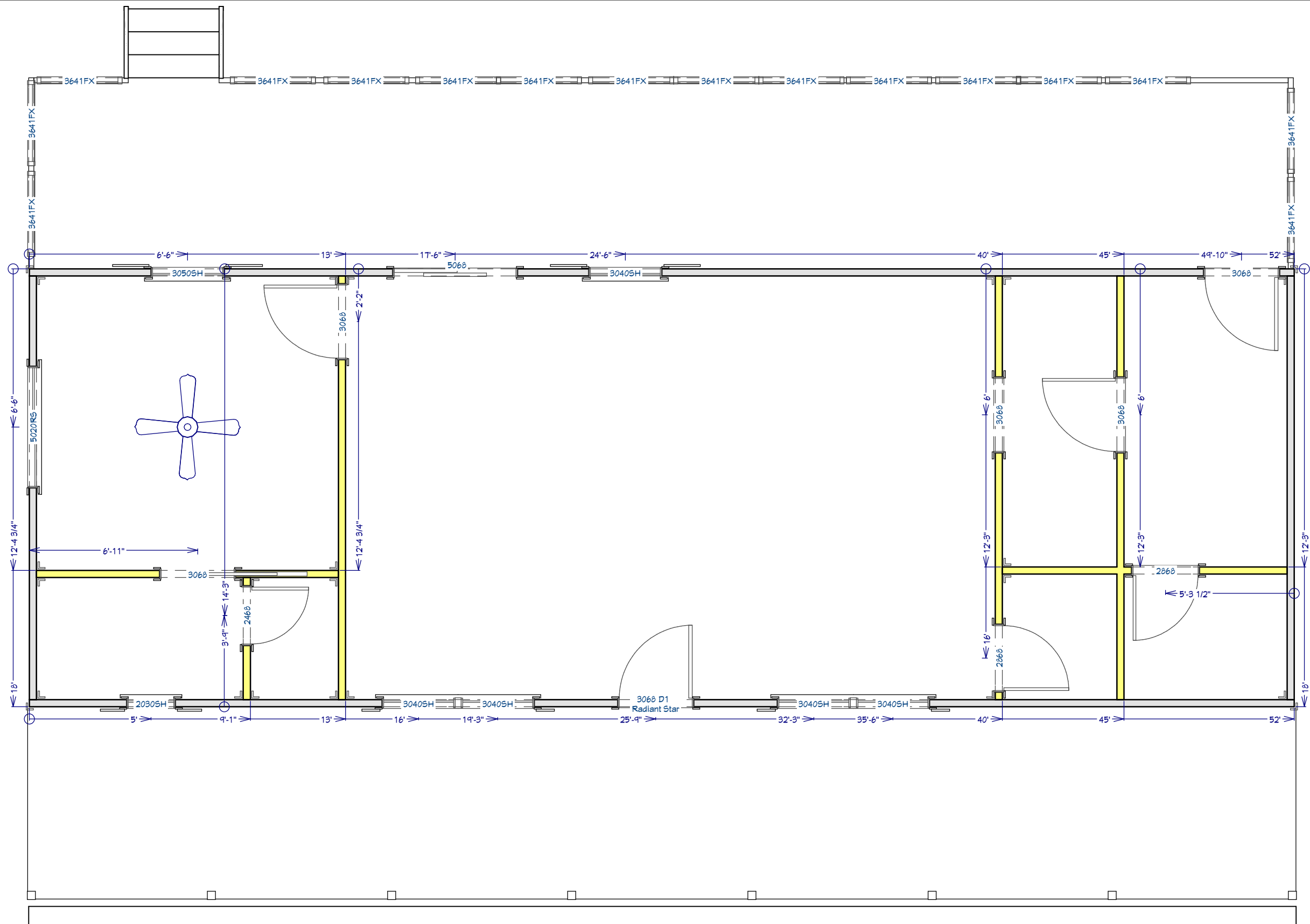
3D Drawing are for illustrational purposes only and do not represent the actually finishes and or fixtures.

1852 Custom Design
 18' x 52' Gable Cabin w/Dormer & Decks

This document is for illustrational purposes only (it has not been reviewed by an architect or engineer unless otherwise stated in or on this document) and should not be relied on for any purpose other than illustration and general layout of building.
 Wolf Valley Buildings, LLC and affiliates assume no liability or responsibility for any mistakes, or errors herein.
 All rights reserved by Wolf Valley Buildings, LLC. This document and the information contained herein are confidential and protected from disclosure pursuant to Federal law. Use, dissemination, or copying of this information is strictly prohibited. If you received this document in error, please erase all copies and attachments and notify the sender immediately.
 Customer Responsible to verify all local, state, and any jurisdictional codes and building requirements.



Original Doc. Date
 09/20/2025
 Revision Date
 10/23/2025
 Revision #
 R2c

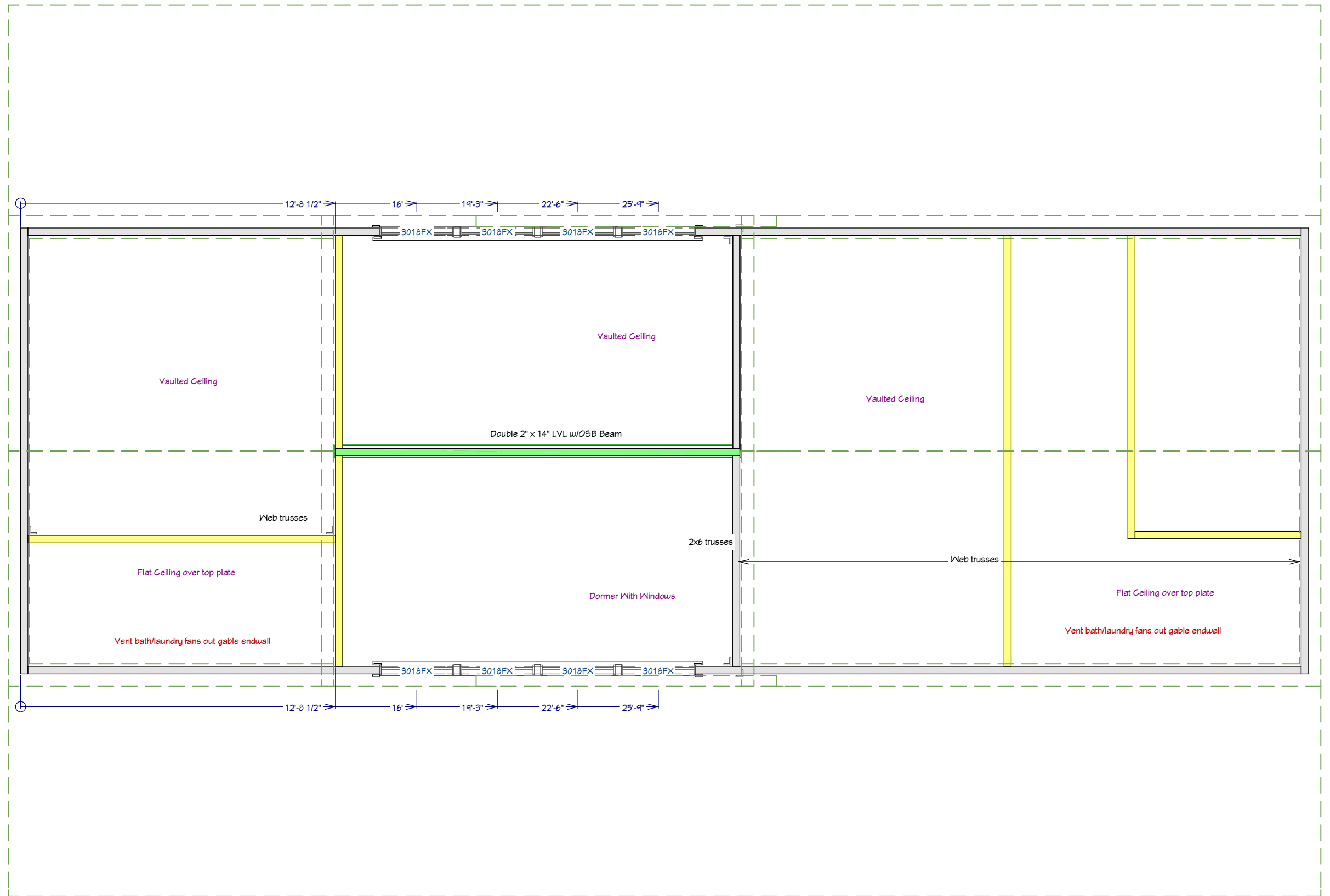


1852 Custom Design
 18' x 52' Gable Cabin w/Dormer & Decks

This document is for illustrative purposes only (it has not been reviewed by an architect or engineer unless otherwise stated in or on this document) and should not be relied on for any purpose other than illustration and general layout of building.
 Wolf Valley Buildings, LLC and affiliates assume no liability or responsibility for any mistakes, or errors herein.
 All rights reserved by Wolf Valley Buildings, LLC. This document and the information contained herein are confidential and protected from disclosure pursuant to Federal law. Use, dissemination, or copying of this information is strictly prohibited. If you received this document in error, please erase all copies and attachments and notify the sender immediately.
 Customer Responsible to verify all local, state, and any jurisdictional codes and building requirements.



Original Doc. Date
 04/20/2025
 Revision Date
 10/23/2025
 Revision #
 R2c



1852 Custom Design
 18' x 52' Gable Cabin w/Dormer & Decks

This document is for illustrational purposes only (it has not been reviewed by an architect or engineer unless otherwise stated in or on this document) and should not be relied on for any purpose other than illustration and general layout of building.

Wolf Valley Buildings, LLC and affiliates assume no liability or responsibility for any mistakes, or errors herein.

All rights reserved by Wolf Valley Buildings, LLC. This document and the information contained herein are confidential and protected from disclosure pursuant to Federal law. Use, dissemination, or copying of this information is strictly prohibited. If you received this document in error, please erase all copies and attachments and notify the sender immediately.

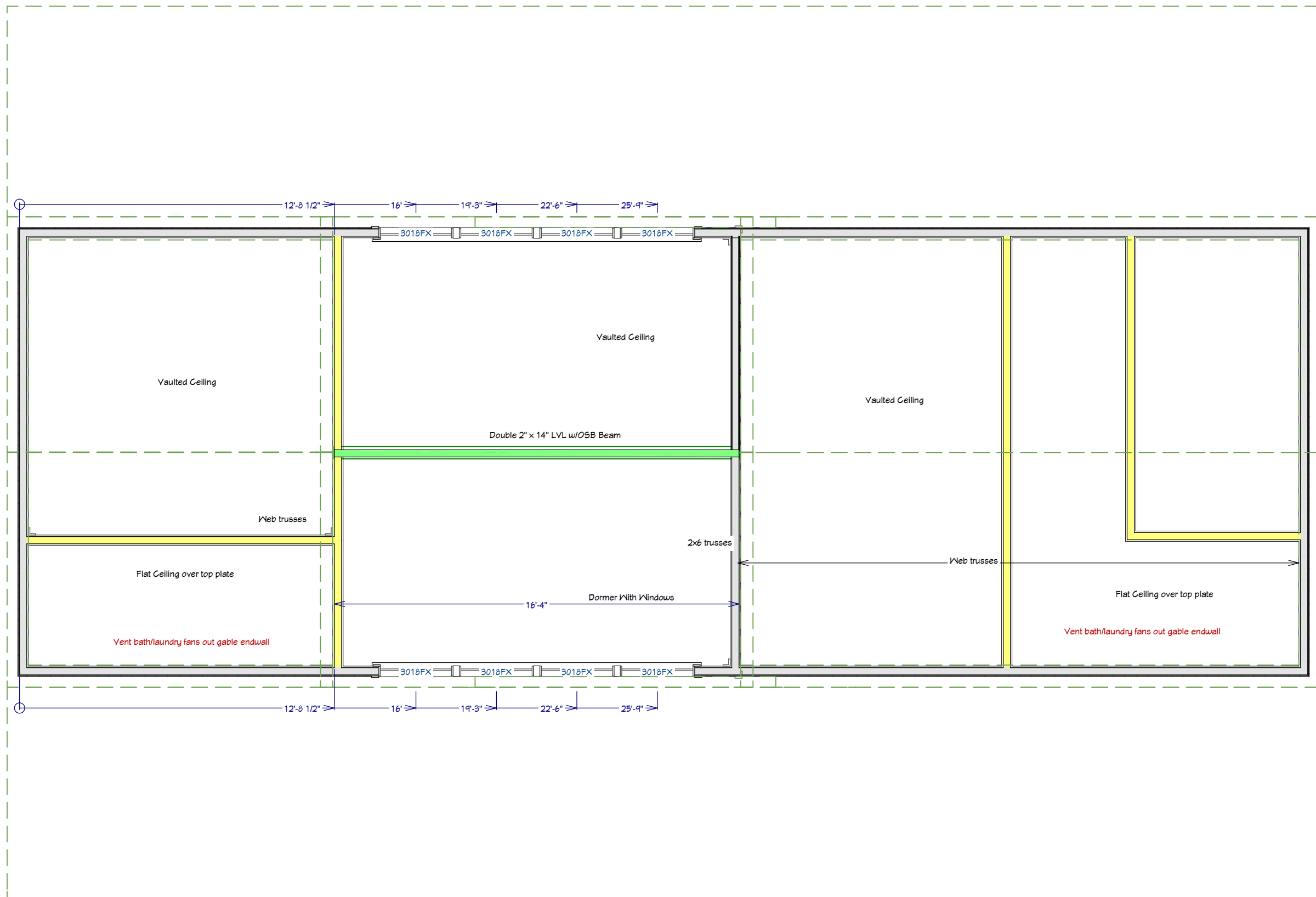
Customer Responsible to verify all local, state, and any jurisdictional codes and building requirements.



Original Doc. Date
 09/20/2025

Revision Date
 10/23/2025

Revision #
 R2c



1852 Custom Design
 18' x 52' Gable Cabin w/Dormer & Decks

This document is for illustrational purposes only (it has not been reviewed by an architect or engineer unless otherwise stated in or on this document) and should not be relied on for any purpose other than illustration and general layout of building.
 Wolf Valley Buildings, LLC and affiliates assume no liability or responsibility for any mistakes, or errors herein.
 All rights reserved by Wolf Valley Buildings, LLC. This document and the information contained herein are confidential and protected from disclosure pursuant to Federal law. Use, dissemination, or copying of this information is strictly prohibited. If you received this document in error, please erase all copies and attachments and notify the sender immediately.
 Customer Responsible to verify all local, state, and any jurisdictional codes and building requirements.



Original Doc. Date
 09/20/2025
 Revision Date
 10/23/2025
 Revision #
 R2c

Bathroom/Laundry Cabinets:
 Style: Stain Grade Shaker
 Color: Clear Coat

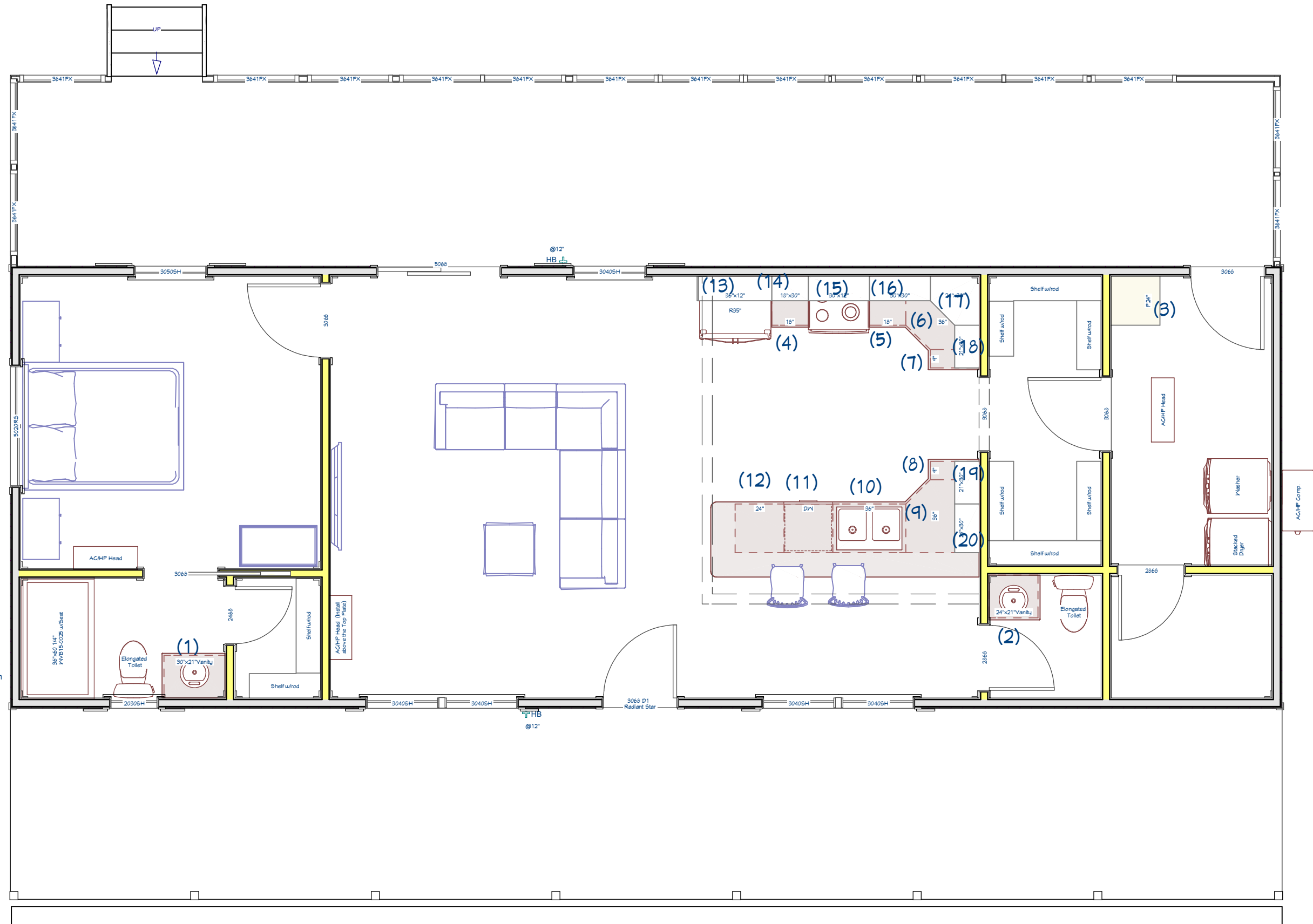
- 1) 30" x 21" Vanity
- 2) 24" x 18" Vanity
- 3) 24" x 24" x 80" Pantry

Kitchen Cabinets:
 Style: Stain Grade Shaker
 Color: Clear Coat

- 4) 18" x 24" Trash Pull Out
- 5) 18" x 24" Drawer Bank
- 6) 36" x 24" Lazy Susan
- 7) 9" x 24" Base
- 8) 9" x 24" Base
- 9) 36" x 24" Lazy Susan
- 10) 36" x 24" Sink Basin
- 11) Dishwasher
- 12) 24" x 24" Base

Kitchen Cabinets: Uppers
 Style: Stain Grade Shaker
 Color: Clear Coat

- 13) 36" x 12" Upper
- 14) 18" x 30" Upper
- 15) 30" x 12" Upper
- 16) 30" x 30" Upper
- 17) 24" x 30" Corner Upper
- 18) 21" x 30" Upper
- 19) 21" x 30" Upper
- 20) 24" x 30" Upper

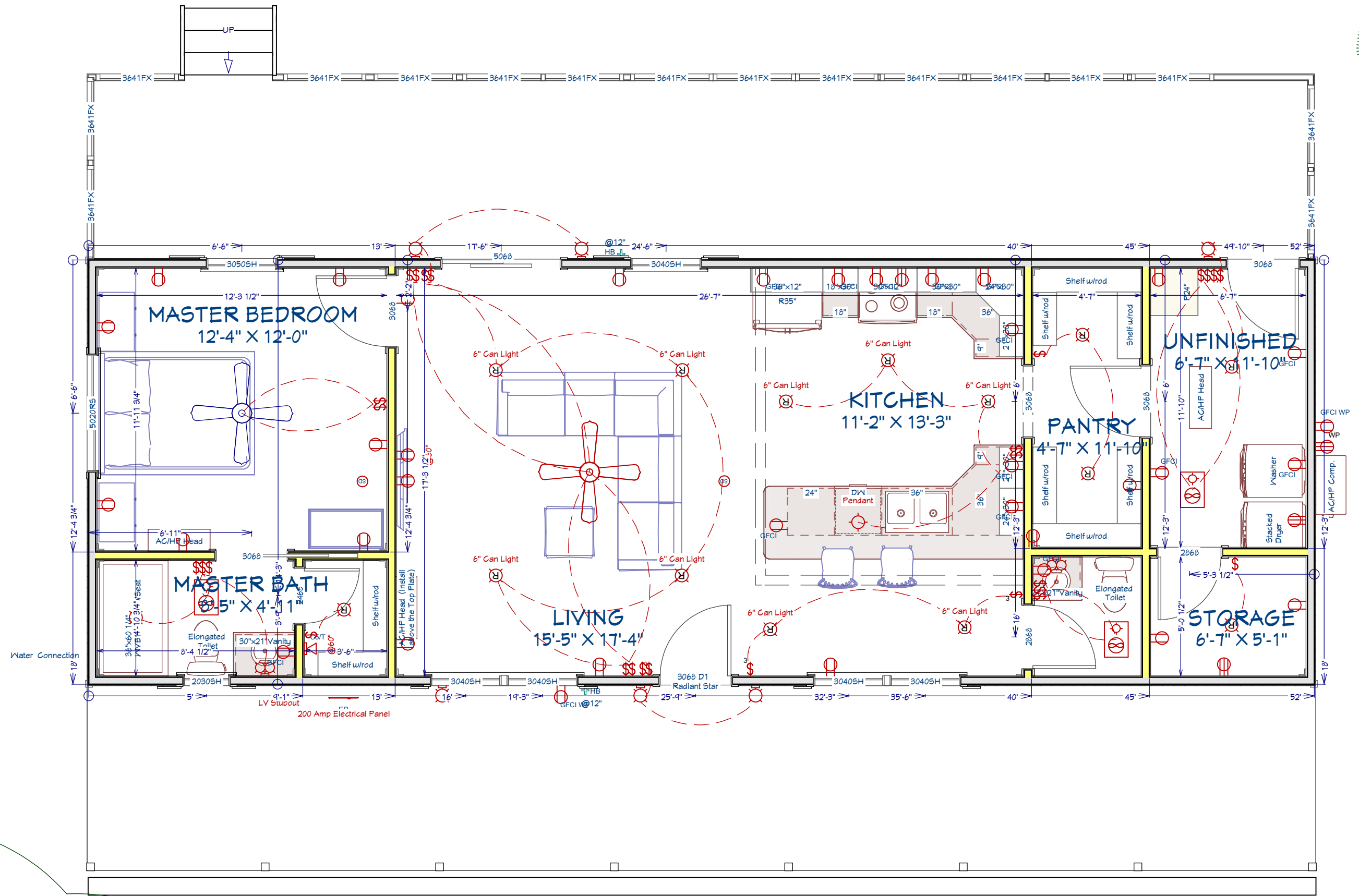


1852 Custom Design
 18' x 52' Gable Cabin w/Dormer & Decks

This document is for illustrational purposes only (it has not been reviewed by an architect or engineer unless otherwise stated in or on this document) and should not be relied on for any purpose other than illustration and general layout of building.
 Wolf Valley Buildings, LLC and affiliates assume no liability or responsibility for any mistakes, or errors herein.
 All rights reserved by Wolf Valley Buildings, LLC. This document and the information contained herein are confidential and protected from disclosure pursuant to Federal law. Use, dissemination, or copying of this information is strictly prohibited. If you received this document in error, please erase all copies and attachments and notify the sender immediately.
 Customer Responsible to verify all local, state, and any jurisdictional codes and building requirements.



Original Doc. Date
09/20/2025
 Revision Date
10/23/2025
 Revision #
R2c



1852 Custom Design
 18' x 52' Gable Cabin w/Dormer & Decks

This document is for illustrative purposes only. It has not been reviewed by an architect or engineer unless otherwise stated in or on this document and should not be relied on for any purpose other than illustration and general layout of building.

Wolf Valley Buildings, LLC and affiliates assume no liability or responsibility for any mistakes, or errors herein.

All rights reserved by Wolf Valley Buildings, LLC. This document and the information contained herein are confidential and protected from disclosure pursuant to Federal law. Use, dissemination, or copying of this information is strictly prohibited. If you received this document in error, please erase all copies and attachments and notify the sender immediately.

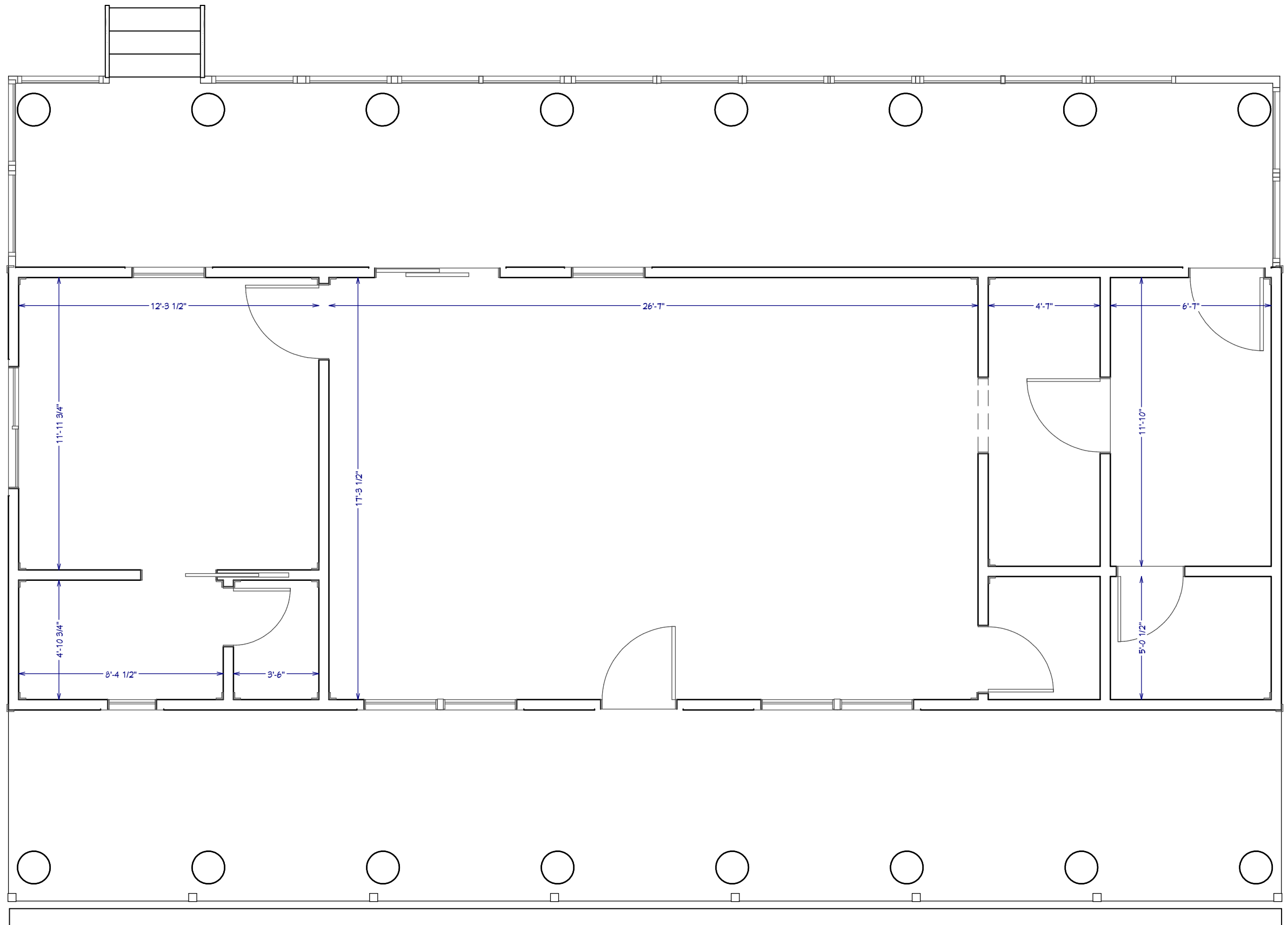
Customer Responsible to verify all local, state, and any jurisdictional codes and building requirements.



Original Doc. Date
09/20/2025

Revision Date
10/23/2025

Revision #
R2c



Room dimension measurements are approximate only. All floor plan measurements override these measurements. These measurements may differ 1-4" depending on wall coverings, trims, etc.

1852 Custom Design
 18' x 52' Gable Cabin w/Dormer & Decks

This document is for illustrative purposes only (it has not been reviewed by an architect or engineer unless otherwise stated in or on this document) and should not be relied on for any purpose other than illustration and general layout of building.
 Wolf Valley Buildings, LLC and affiliates assume no liability or responsibility for any mistakes, or errors herein.
 All rights reserved by Wolf Valley Buildings, LLC. This document and the information contained herein are confidential and protected from disclosure pursuant to Federal law. Use, dissemination, or copying of this information is strictly prohibited. If you received this document in error, please erase all copies and attachments and notify the sender immediately.
 Customer Responsible to verify all local, state, and any jurisdictional codes and building requirements.



WOLF VALLEY
 BUILDINGS

3461 FM934
 Itasca, TX 76055
www.wolfvalleybuildings.com

Original Doc. Date
 09/20/2025

Revision Date
 10/23/2025

Revision #
 R2c

Room Dimensions

Page 8 of 8