



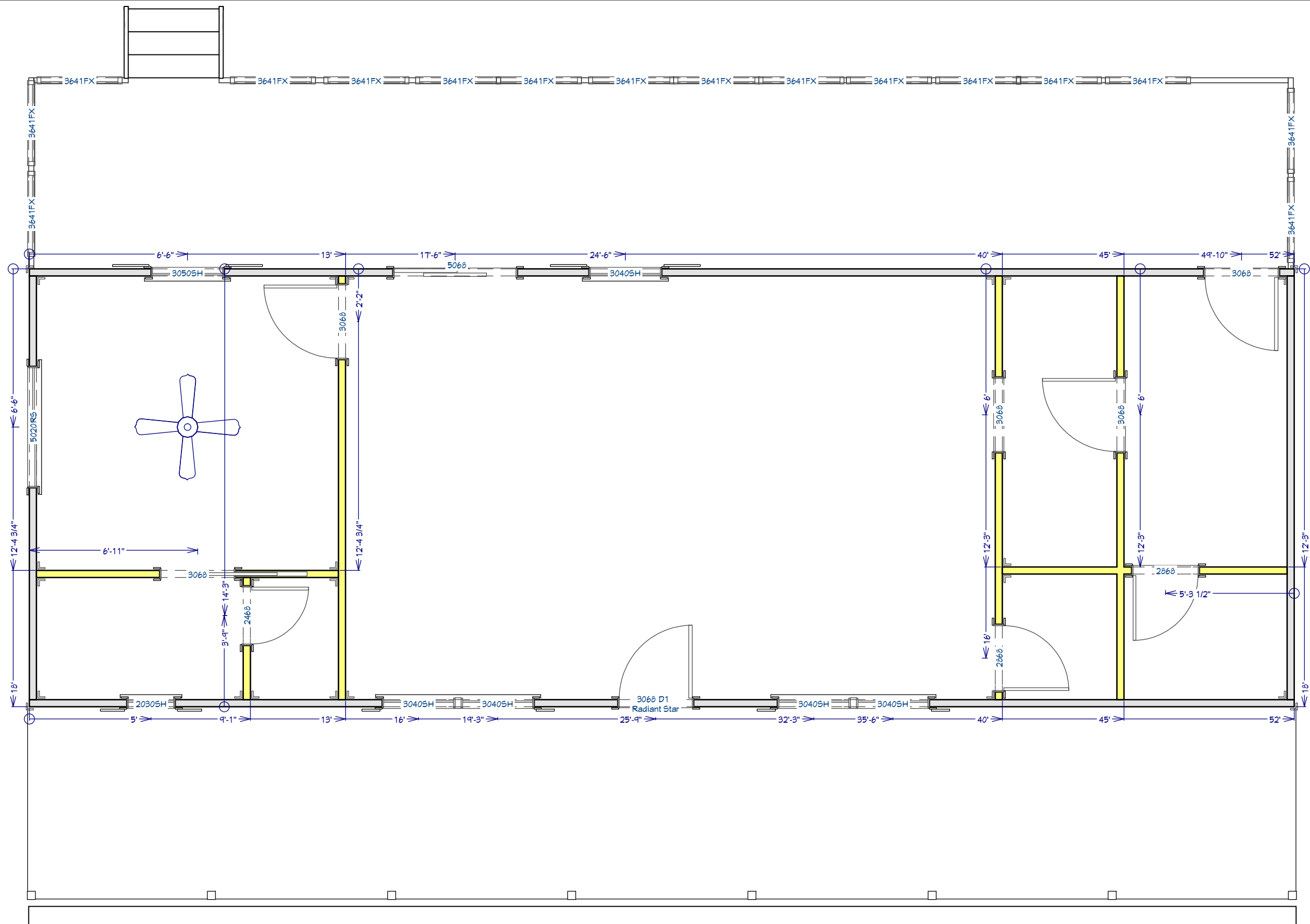
3D Drawing are for illustrational purposes only and do not represent the actually finishes and or fixtures.

The Eastwood
 18' x 52' Gable Cabin w/Dormer & Decks

This document is for illustrational purposes only (it has not been reviewed by an architect or engineer unless otherwise stated in or on this document) and should not be relied on for any purpose other than illustration and general layout of building.
 Wolf Valley Buildings, LLC and affiliates assume no liability or responsibility for any mistakes, or errors herein.
 All rights reserved by Wolf Valley Buildings, LLC. This document and the information contained herein are confidential and protected from disclosure pursuant to Federal law. Use, dissemination, or copying of this information is strictly prohibited. If you received this document in error, please erase all copies and attachments and notify the sender immediately.
 Customer Responsible to verify all local, state, and any jurisdictional codes and building requirements.



Original Doc. Date
 09/20/2025
 Revision Date
 10/23/2025
 Revision #
 R2c

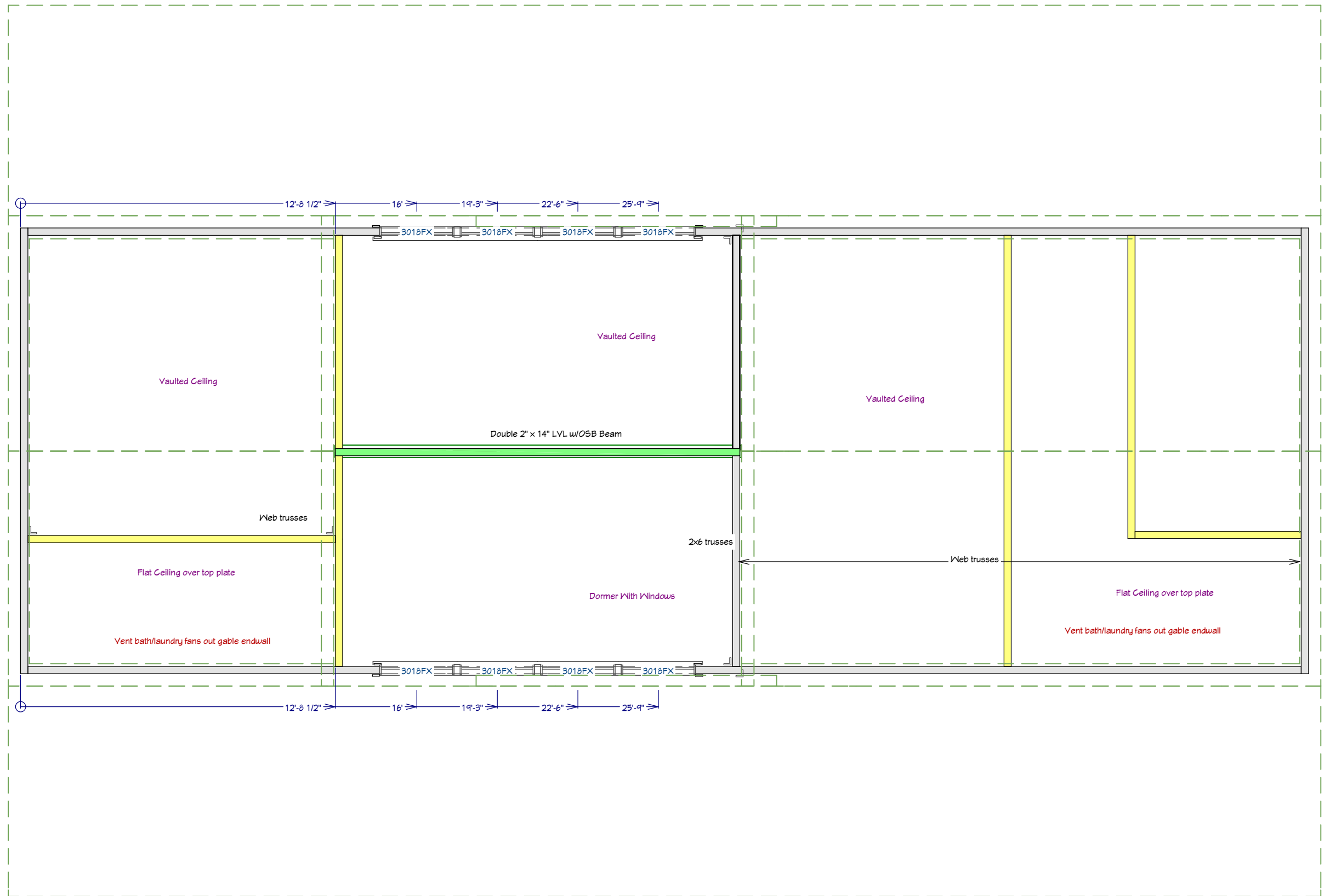


The Eastwood
 18' x 52' Gable Cabin w/Dormer & Decks

This document is for illustrative purposes only (it has not been reviewed by an architect or engineer unless otherwise stated in or on this document) and should not be relied on for any purpose other than illustration and general layout of building.
 Wolf Valley Buildings, LLC and affiliates assume no liability or responsibility for any mistakes, or errors herein.
 All rights reserved by Wolf Valley Buildings, LLC. This document and the information contained herein are confidential and protected from disclosure pursuant to Federal law. Use, dissemination, or copying of this information is strictly prohibited. If you received this document in error, please erase all copies and attachments and notify the sender immediately.
 Customer Responsible to verify all local, state, and any jurisdictional codes and building requirements.



Original Doc. Date
09/20/2025
 Revision Date
10/23/2025
 Revision #
R2c

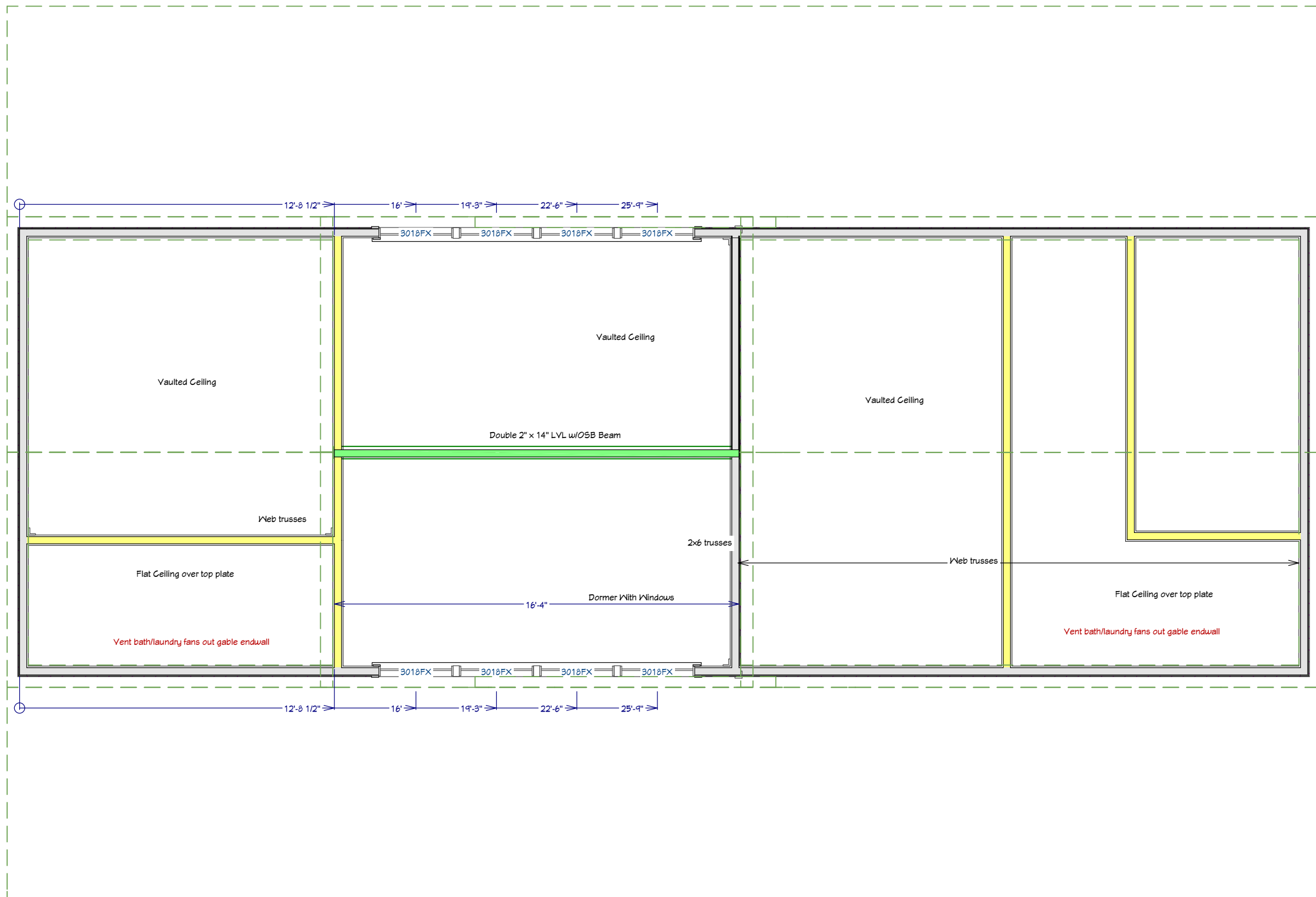


The Eastwood
 18' x 52' Gable Cabin w/Dormer & Decks

This document is for illustrational purposes only (it has not been reviewed by an architect or engineer unless otherwise stated in or on this document) and should not be relied on for any purpose other than illustration and general layout of building.
 Wolf Valley Buildings, LLC and affiliates assume no liability or responsibility for any mistakes, or errors herein.
 All rights reserved by Wolf Valley Buildings, LLC. This document and the information contained herein are confidential and protected from disclosure pursuant to Federal law. Use, dissemination, or copying of this information is strictly prohibited. If you received this document in error, please erase all copies and attachments and notify the sender immediately.
 Customer Responsible to verify all local, state, and any jurisdictional codes and building requirements.



Original Doc. Date
 09/20/2025
 Revision Date
 10/23/2025
 Revision #
 R2c



The Eastwood
 18' x 52' Gable Cabin w/Dormer & Decks

This document is for illustrational purposes only (it has not been reviewed by an architect or engineer unless otherwise stated in or on this document) and should not be relied on for any purpose other than illustration and general layout of building.
 Wolf Valley Buildings, LLC and affiliates assume no liability or responsibility for any mistakes, or errors herein.
 All rights reserved by Wolf Valley Buildings, LLC. This document and the information contained herein are confidential and protected from disclosure pursuant to Federal law. Use, dissemination, or copying of this information is strictly prohibited. If you received this document in error, please erase all copies and attachments and notify the sender immediately.
 Customer Responsible to verify all local, state, and any jurisdictional codes and building requirements.



Original Doc. Date
 09/20/2025
 Revision Date
 10/23/2025
 Revision #
 R2c

Bathroom/Laundry Cabinets:
 Style: Stain Grade Shaker
 Color: Clear Coat

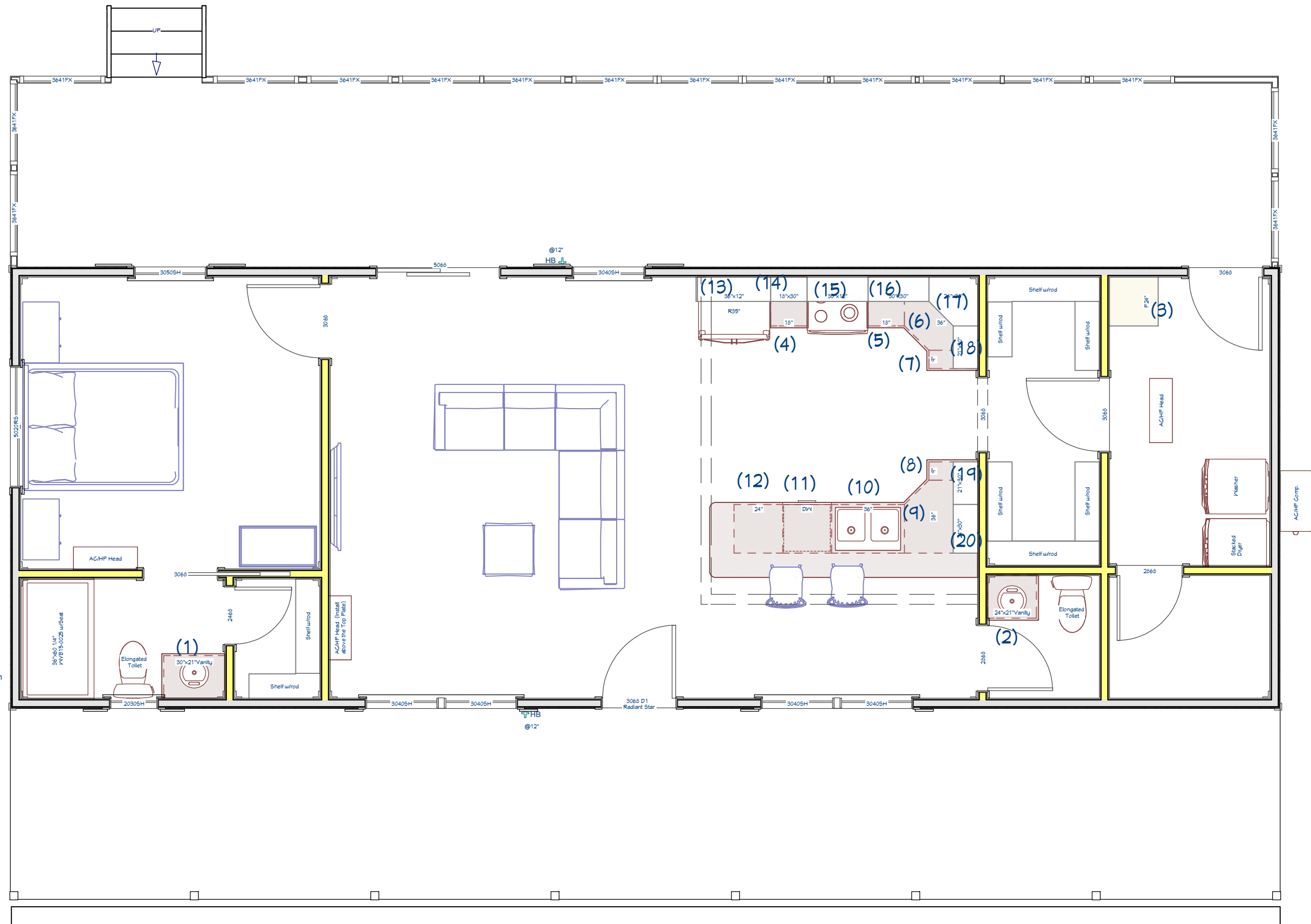
- 1) 30" x 21" Vanity
- 2) 24" x 18" Vanity
- 3) 24" x 24" x 80" Pantry

Kitchen Cabinets:
 Style: Stain Grade Shaker
 Color: Clear Coat

- 4) 18" x 24" Trash Pull Out
- 5) 18" x 24" Drawer Bank
- 6) 36" x 24" Lazy Susan
- 7) 9" x 24" Base
- 8) 9" x 24" Base
- 9) 36" x 24" Lazy Susan
- 10) 36" x 24" Sink Basin
- 11) Dishwasher
- 12) 24" x 24" Base

Kitchen Cabinets: Uppers
 Style: Stain Grade Shaker
 Color: Clear Coat

- 13) 36" x 12" Upper
- 14) 18" x 30" Upper
- 15) 30" x 12" Upper
- 16) 30" x 30" Upper
- 17) 24" x 30" Corner Upper
- 18) 21" x 30" Upper
- 19) 21" x 30" Upper
- 20) 24" x 30" Upper

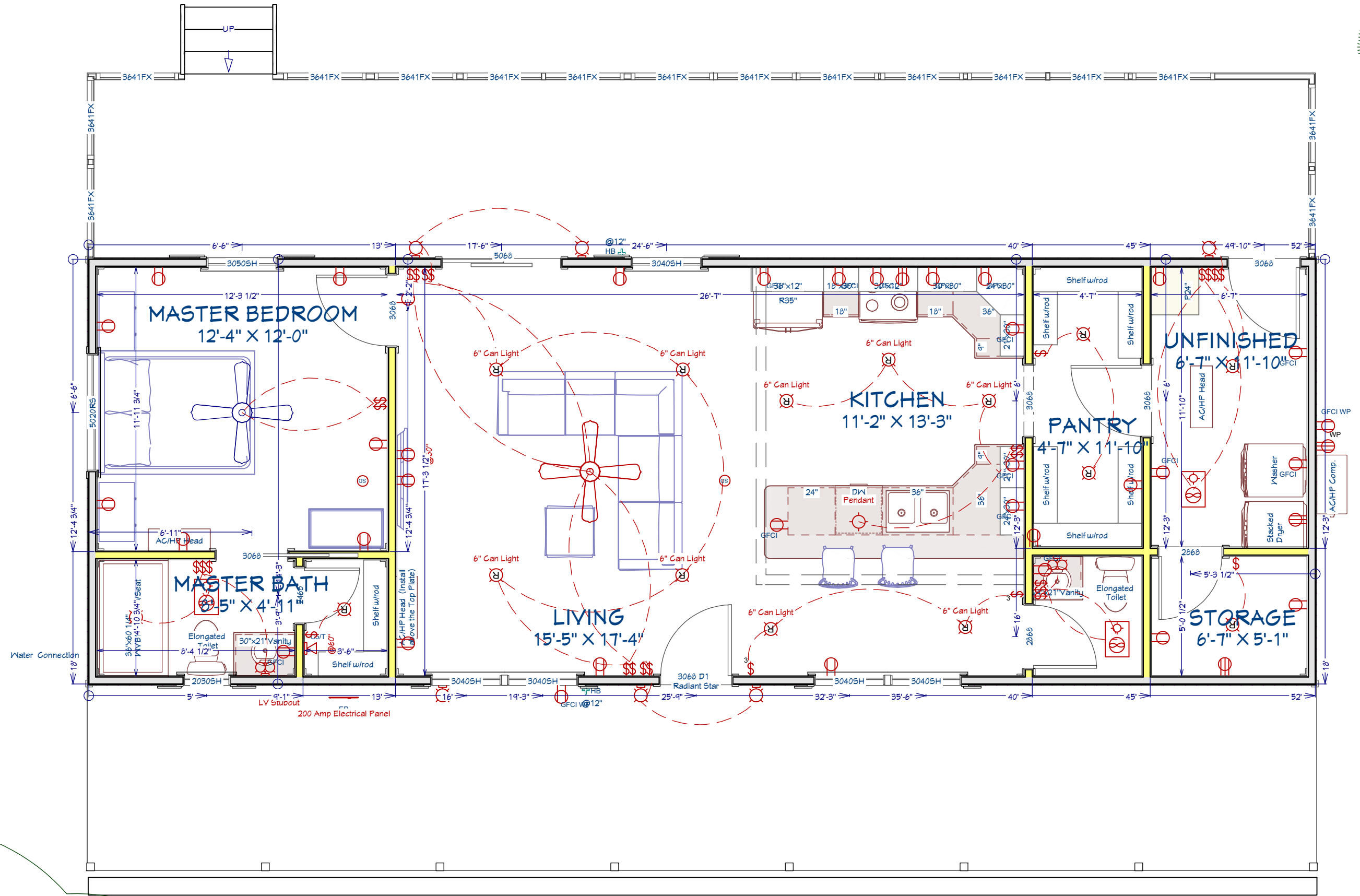


The Eastwood
 18' x 52' Gable Cabin w/Dormer & Decks

This document is for illustrational purposes only (it has not been reviewed by an architect or engineer unless otherwise stated in or on this document) and should not be relied on for any purpose other than illustration and general layout of building.
 Wolf Valley Buildings, LLC and affiliates assume no liability or responsibility for any mistakes, or errors herein.
 All rights reserved by Wolf Valley Buildings, LLC. This document and the information contained herein are confidential and protected from disclosure pursuant to Federal law. Use, dissemination, or copying of this information is strictly prohibited. If you received this document in error, please erase all copies and attachments and notify the sender immediately.
 Customer Responsible to verify all local, state, and any jurisdictional codes and building requirements.



Original Doc. Date
09/20/2025
 Revision Date
10/23/2025
 Revision #
R2c

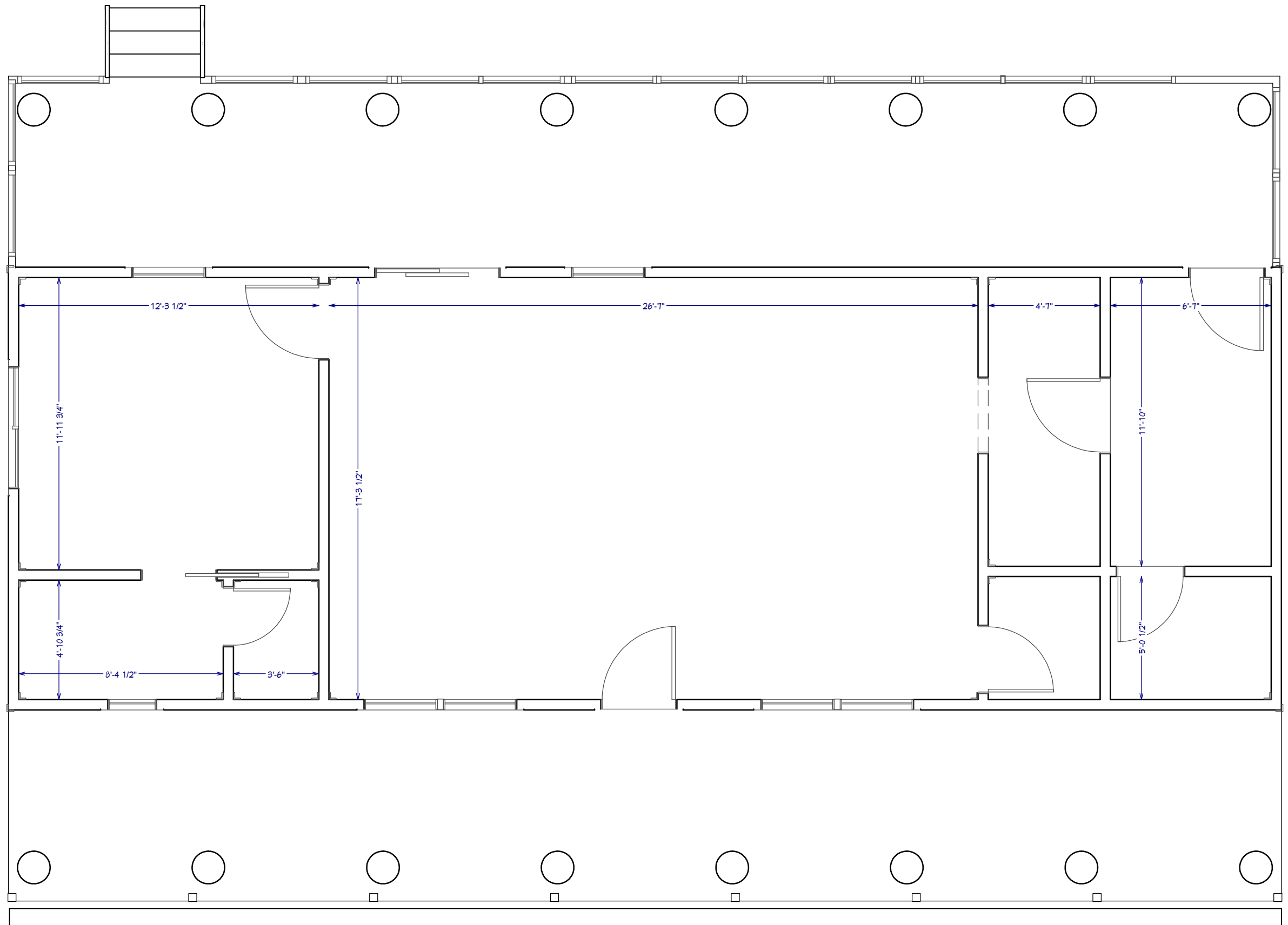


The Eastwood
 18' x 52' Gable Cabin w/Dormer & Decks

This document is for illustrative purposes only. It has not been reviewed by an architect or engineer unless otherwise stated in or on this document and should not be relied on for any purpose other than illustration and general layout of building.
 Wolf Valley Buildings, LLC and affiliates assume no liability or responsibility for any mistakes, or errors herein.
 All rights reserved by Wolf Valley Buildings, LLC. This document and the information contained herein are confidential and protected from disclosure pursuant to Federal law. Use, dissemination, or copying of this information is strictly prohibited. If you received this document in error, please erase all copies and attachments and notify the sender immediately.
 Customer Responsible to verify all local, state, and any jurisdictional codes and building requirements.



Original Doc. Date
09/20/2025
 Revision Date
10/23/2025
 Revision #
R2c



Room dimension measurements are approximate only. All floor plan measurements override these measurements. These measurements may differ 1-4" depending on wall coverings, trims, etc.

| | | | | |
|--|--|--|--|--|
| <p align="center">The Eastwood 18' x 52' Gable Cabin w/Dormer & Decks</p> | <p><small>This document is for illustrative purposes only (it has not been reviewed by an architect or engineer unless otherwise stated in or on this document) and should not be relied on for any purpose other than illustration and general layout of building.</small></p> <p><small>Wolf Valley Buildings, LLC and affiliates assume no liability or responsibility for any mistakes, or errors herein.</small></p> <p><small>All rights reserved by Wolf Valley Buildings, LLC. This document and the information contained herein are confidential and protected from disclosure pursuant to Federal law. Use, dissemination, or copying of this information is strictly prohibited. If you received this document in error, please erase all copies and attachments and notify the sender immediately.</small></p> <p><small>Customer Responsible to verify all local, state, and any jurisdictional codes and building requirements.</small></p> |  <p>WOLF VALLEY BUILDINGS</p> <p>3461 FM934 Itasca, TX 76055 www.wolfvalleybuildings.com</p> | <p>Original Doc. Date 09/20/2025</p> <p>Revision Date 10/23/2025</p> <p>Revision # R2c</p> | <p align="center">Room Dimensions Page 8 of 8</p> |
|--|--|--|--|--|