

3D Drawing are for illustrational purposes only and do not represent the actually finishes and or fixtures.



**The Longhorn**  
20' x 64' Gable Cabin w/Dormers

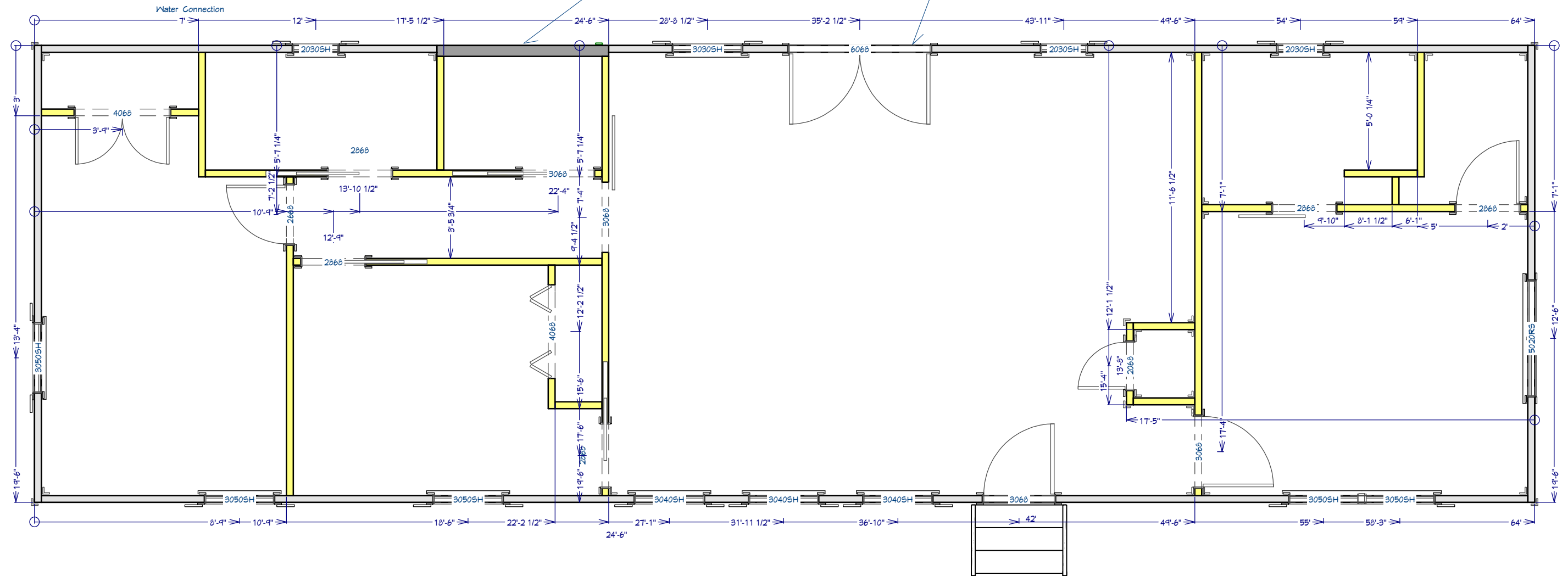
This document is for illustrational purposes only (it has not been reviewed by an architect or engineer unless otherwise stated in or on this document) and should not be relied on for any purpose other than illustration and general layout of building.  
Wolf Valley Buildings, LLC and affiliates assume no liability or responsibility for any mistakes, or errors herein.  
All rights reserved by Wolf Valley Buildings, LLC. This document and the information contained herein are confidential and protected from disclosure pursuant to Federal law. Use, dissemination, or copying of this information is strictly prohibited. If you received this document in error, please erase all copies and attachments and notify the sender immediately.  
Customer Responsible to verify all local, state, and any jurisdictional codes and building requirements.



Original Doc. Date  
04/14/2026  
Revision Date  
05/07/2026  
Revision #  
R1i

Framing Instructions:  
Double Wall for Laundry

Framing Instructions:  
French Door: LH Open



# The Longhorn

20' x 64' Gable Cabin w/Dormers

This document is for illustrative purposes only. It has not been reviewed by an architect or engineer unless otherwise stated in or on this document and should not be relied on for any purpose other than illustration and general layout of building.

Wolf Valley Buildings, LLC and affiliates assume no liability or responsibility for any mistakes, or errors herein.

All rights reserved by Wolf Valley Buildings, LLC. This document and the information contained herein are confidential and protected from disclosure pursuant to Federal law. Use, dissemination, or copying of this information is strictly prohibited. If you received this document in error, please erase all copies and attachments and notify the sender immediately.

Customer Responsible to verify all local, state, and any jurisdictional codes and building requirements.



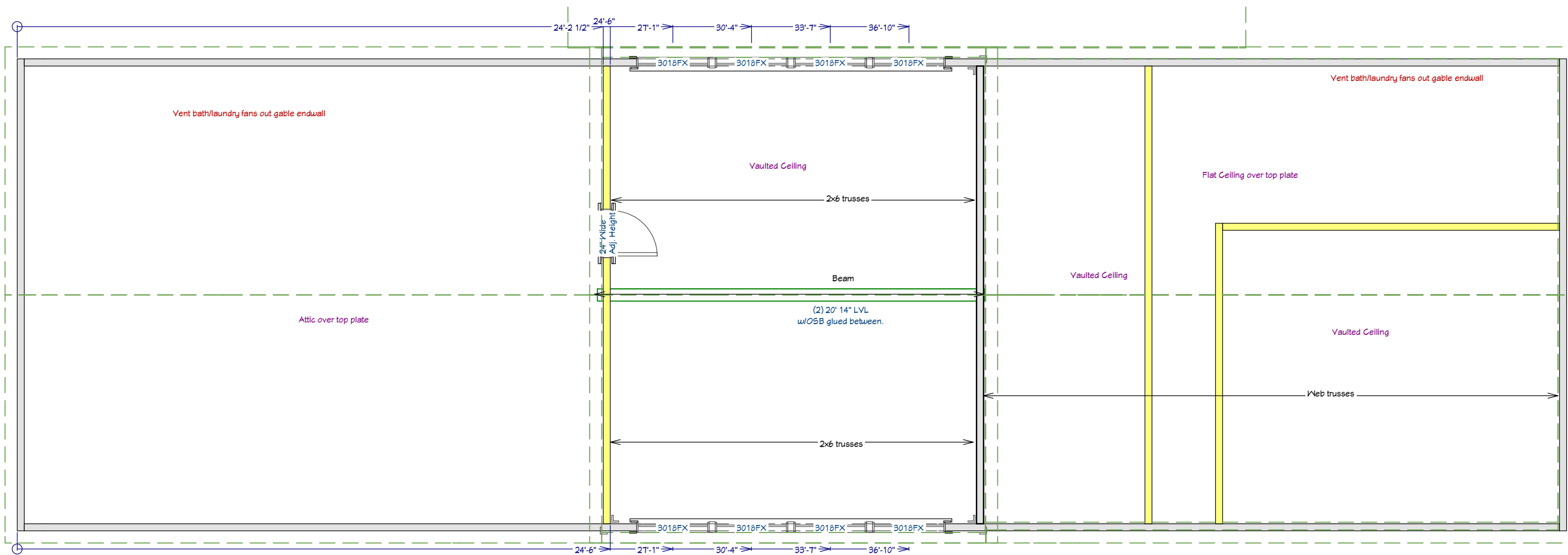
**WOLF VALLEY**  
BUILDINGS

3461 FM934  
Itasca, TX 76055  
www.wolfvalleybuildings.com

Original Doc. Date  
04/14/2026

Revision Date  
05/07/2026

Revision #  
R1i



# The Longhorn

## 20' x 64' Gable Cabin w/Dormers

This document is for illustrational purposes only (it has not been reviewed by an architect or engineer unless otherwise stated in or on this document) and should not be relied on for any purpose other than illustration and general layout of building.

Wolf Valley Buildings, LLC and affiliates assume no liability or responsibility for any mistakes, or errors herein.

All rights reserved by Wolf Valley Buildings, LLC. This document and the information contained herein are confidential and protected from disclosure pursuant to Federal law. Use, dissemination, or copying of this information is strictly prohibited. If you received this document in error, please erase all copies and attachments and notify the sender immediately.

Customer Responsible to verify all local, state, and any jurisdictional codes and building requirements.



**WOLF VALLEY**  
BUILDINGS

3461 FM934  
Itasca, TX 76055  
www.wolfvalleybuildings.com

Original Doc. Date  
04/14/2026

Revision Date  
05/07/2026

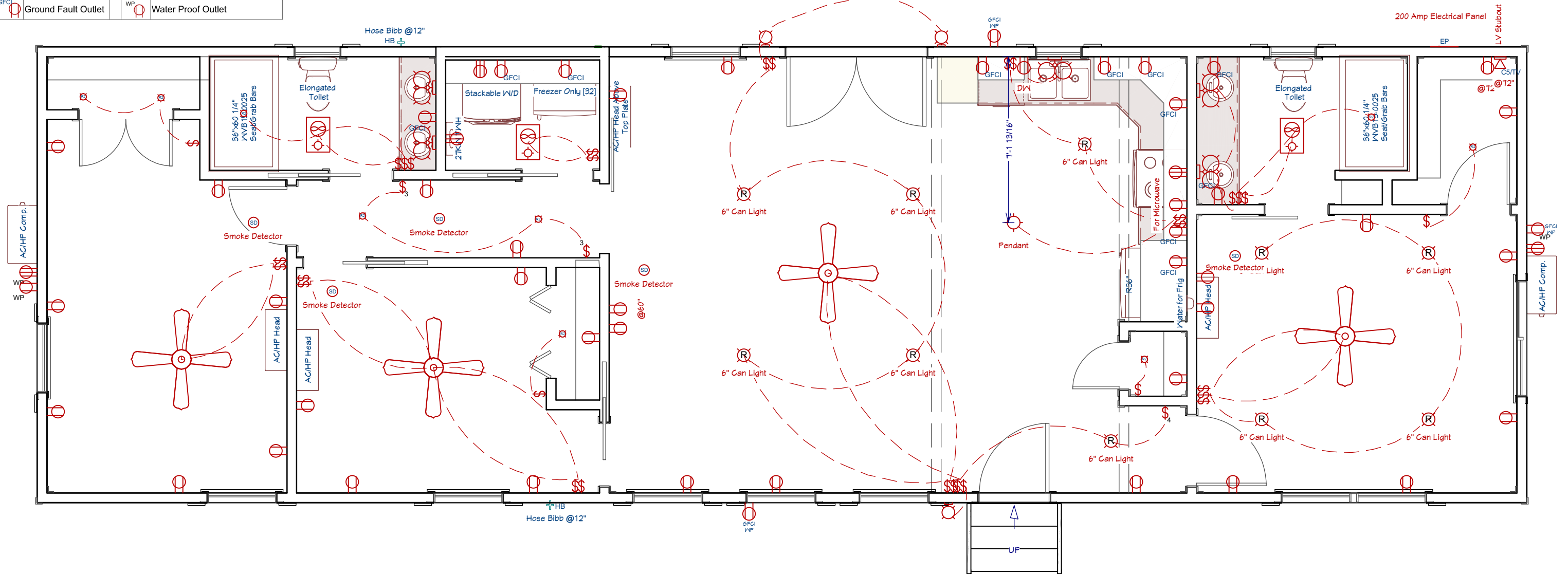
Revision #  
R1i

Loft Framing

Page 3 of 9

\$\$	2 Gang Switch	⊕	Outlet
⊕	220V Outlet	⊖	Pendant Light
\$\$\$	3 Gang Switch	⊖	Porch Light
(B)	Bare Bulb	(R)	Recessed Light
CAT Stubout	CAT Line Stubout	SC	Sconce Light
CAT6 @12'	CAT6 w/TV	SD	Smoke Detector
⊕	Ceiling Fan	⊖	Spot Light
⊖	Chandelier	⊖	Switch
⊖	CO Detector	⊖	Three Way Switch
EP	Electrical Panel Box	TW FAN	Through Wall Fan
⊖	Exhaust Fan	⊖	Under Cabinet Light
⊖	Exhaust Fan - Range	⊖	Vanity Light
⊖	Flush Mount Light	WP	Water Proof 220V Outlet
⊖	Four Way Switch	WP	Water Proof Ground Fault Outlet
⊖	Ground Fault Outlet	WP	Water Proof Outlet

# Electrical Schedule



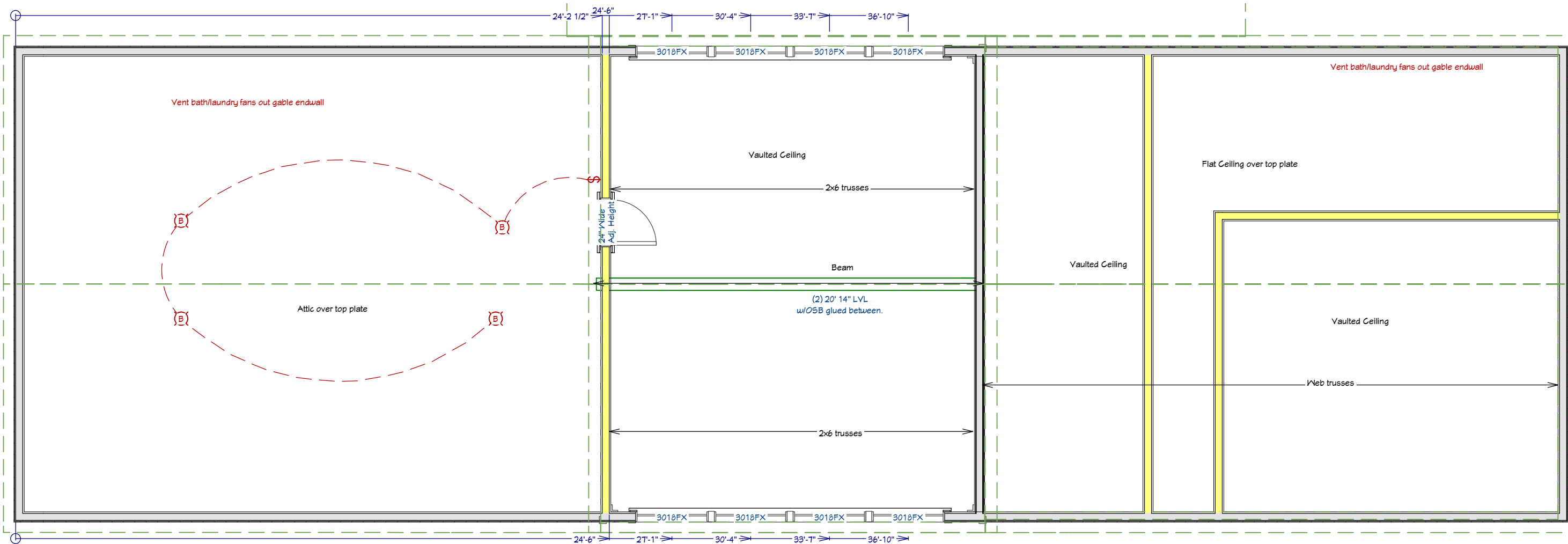
**The Longhorn**  
 20' x 64' Gable Cabin w/Dormers

This document is for illustrational purposes only (it has not been reviewed by an architect or engineer unless otherwise stated in or on this document) and should not be relied on for any purpose other than illustration and general layout of building.  
 Wolf Valley Buildings, LLC and affiliates assume no liability or responsibility for any mistakes, or errors herein.  
 All rights reserved by Wolf Valley Buildings, LLC. This document and the information contained herein are confidential and protected from disclosure pursuant to Federal law. Use, dissemination, or copying of this information is strictly prohibited. If you received this document in error, please erase all copies and attachments and notify the sender immediately.  
 Customer Responsible to verify all local, state, and any jurisdictional codes and building requirements.



Original Doc. Date  
04/14/2026  
 Revision Date  
05/07/2026  
 Revision #  
R1i

Electrical  
 Page 4 of 9



# The Longhorn

## 20' x 64' Gable Cabin w/Dormers

This document is for illustrational purposes only (it has not been reviewed by an architect or engineer unless otherwise stated in or on this document) and should not be relied on for any purpose other than illustration and general layout of building.

Wolf Valley Buildings, LLC and affiliates assume no liability or responsibility for any mistakes, or errors herein.

All rights reserved by Wolf Valley Buildings, LLC. This document and the information contained herein are confidential and protected from disclosure pursuant to Federal law. Use, dissemination, or copying of this information is strictly prohibited. If you received this document in error, please erase all copies and attachments and notify the sender immediately.

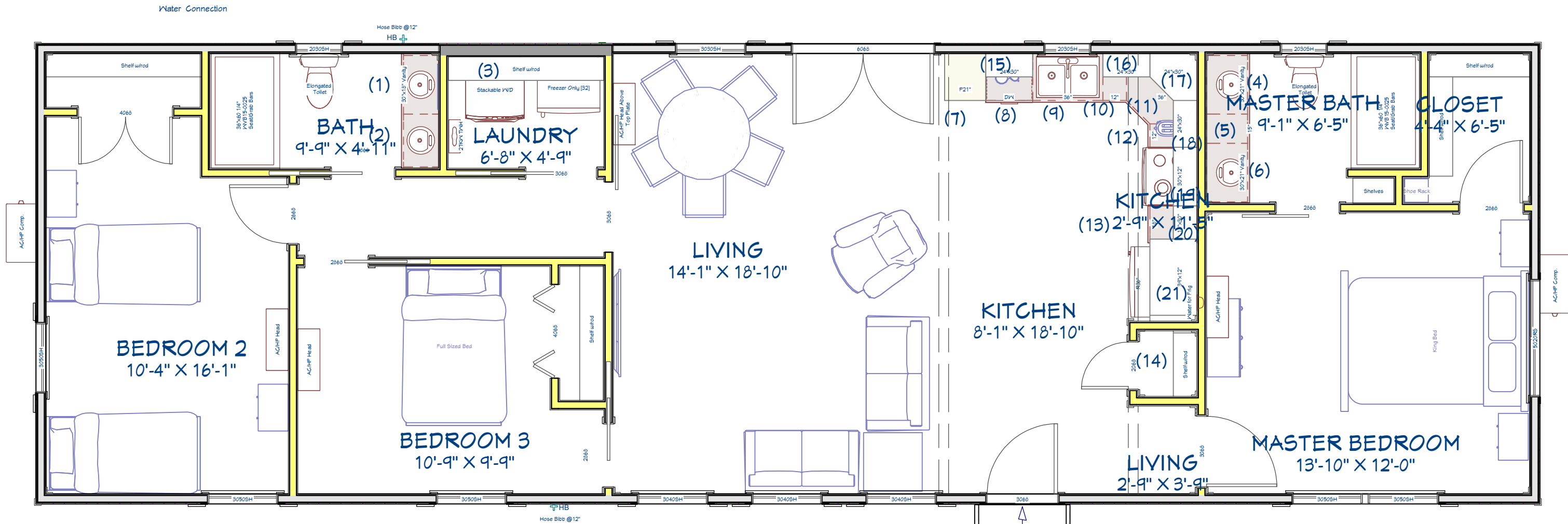
Customer Responsible to verify all local, state, and any jurisdictional codes and building requirements.



Original Doc. Date  
04/14/2026

Revision Date  
05/07/2026

Revision #  
R1i



**Cabinet Instructions: Bathrooms**  
 Style: Paint Grade Shaker  
 Color: WVB Pure White

- 1) 30" x 18" Vanity
- 2) 27" x 18" Vanity
- 3) Shelves. 72" or higher?
- 4) 30" x 21" Vanity
- 5) 15" x 21" Drawer Bank
- 6) 30" x 21" Vanity

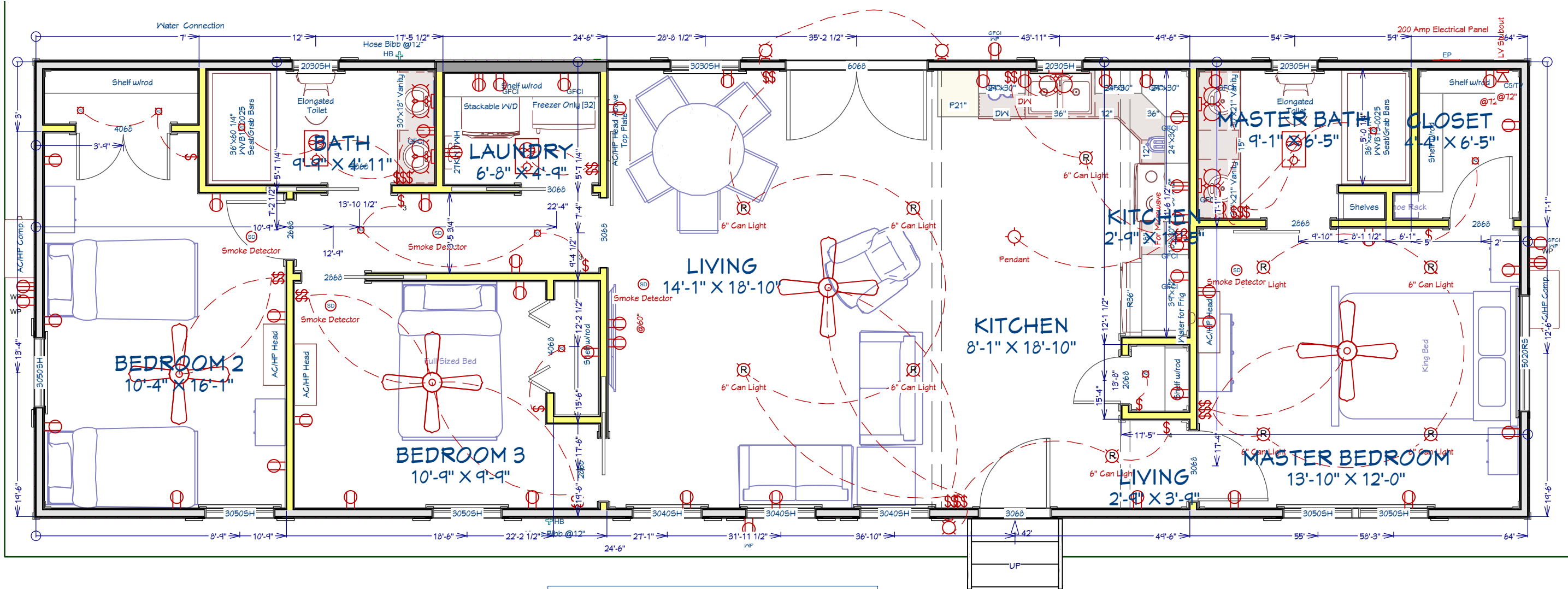
**Cabinet Instructions: Kitchen Bases**  
 Style: Paint Grade Shaker  
 Color: WVB Pure White

- 7) 21" x 24" x 84" Pantry
- 8) Dishwasher
- 9) 36" x 24" Sink Basin w/Farmhouse Sink #7405012
- 10) 12" x 24" Base
- 11) 36" x 24" Lazy Susan
- 12) 12" x 24" Drawer Bank
- 13) 18" x 24" Base w/Garbage Pull Out
- 14) Pantry Shelves

**Cabinet Instructions: Kitchen Uppers**  
 Style: Paint Grade Shaker  
 Color: WVB Pure White

- 15) 24" x 30" Upper
- 16) 24" x 30" Upper
- 17) 24" x 30" Corner Upper
- 18) 24" x 30" Upper
- 19) 30" x 12" Upper
- 20) 18" x 30" Upper
- 21) 39" x 12" x 24" Upper

Wall Covering:  
 Kitchen/Living: Shiplap  
 Other Rooms: LP Vertical



Appliances, furniture, and fixtures are for visual and spatial purposes ONLY. They are not included in the construction of this building.

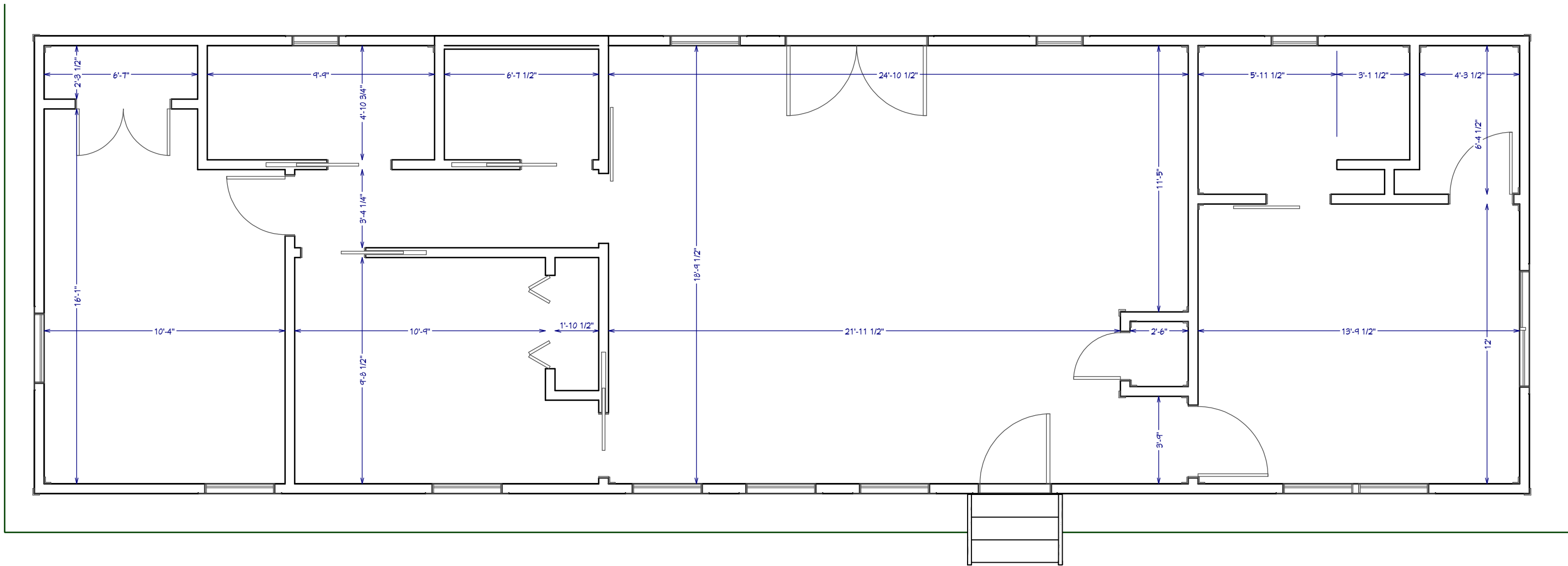
The Longhorn  
 20' x 64' Gable Cabin w/Dormers

This document is for illustrational purposes only (it has not been reviewed by an architect or engineer unless otherwise stated in or on this document) and should not be relied on for any purpose other than illustration and general layout of building.  
 Wolf Valley Buildings, LLC and affiliates assume no liability or responsibility for any mistakes, or errors herein.  
 All rights reserved by Wolf Valley Buildings, LLC. This document and the information contained herein are confidential and protected from disclosure pursuant to Federal law. Use, dissemination, or copying of this information is strictly prohibited. If you received this document in error, please erase all copies and attachments and notify the sender immediately.  
 Customer Responsible to verify all local, state, and any jurisdictional codes and building requirements.



Original Doc. Date  
 04/14/2026  
 Revision Date  
 05/07/2026  
 Revision #  
 R1i

All Layers  
 Page 7 of 9



Room dimension measurements are approximate only. All floor plan measurements override these measurements. These measurements may differ 1-4" depending on wall coverings, trims, etc.

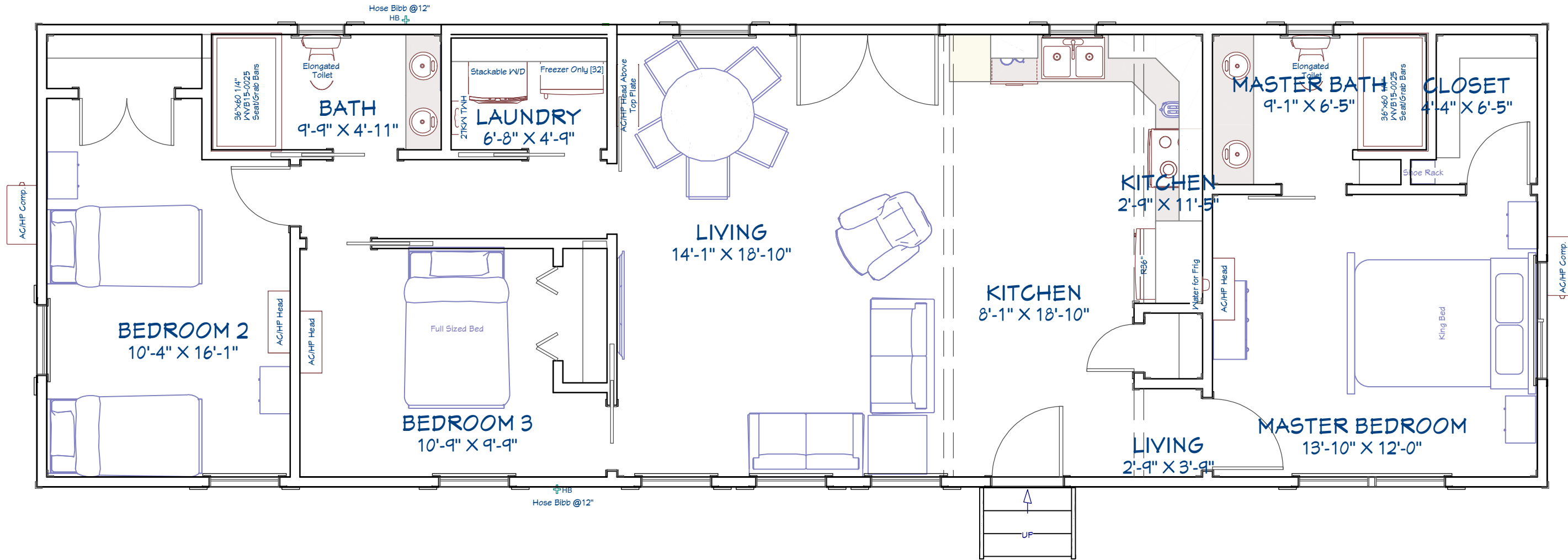
**The Longhorn**  
 20' x 64' Gable Cabin w/Dormers

This document is for illustrational purposes only (it has not been reviewed by an architect or engineer unless otherwise stated in or on this document) and should not be relied on for any purpose other than illustration and general layout of building.  
 Wolf Valley Buildings, LLC and affiliates assume no liability or responsibility for any mistakes, or errors herein.  
 All rights reserved by Wolf Valley Buildings, LLC. This document and the information contained herein are confidential and protected from disclosure pursuant to Federal law. Use, dissemination, or copying of this information is strictly prohibited. If you received this document in error, please erase all copies and attachments and notify the sender immediately.  
 Customer Responsible to verify all local, state, and any jurisdictional codes and building requirements.



Original Doc. Date  
 04/14/2026  
 Revision Date  
 05/07/2026  
 Revision #  
 R1i

Room Dimensions  
 Page 8 of 9



## The Longhorn

20' x 64' Gable Cabin w/Dormers

This document is for illustrational purposes only (it has not been reviewed by an architect or engineer unless otherwise stated in or on this document) and should not be relied on for any purpose other than illustration and general layout of building.

Wolf Valley Buildings, LLC and affiliates assume no liability or responsibility for any mistakes, or errors herein.

All rights reserved by Wolf Valley Buildings, LLC. This document and the information contained herein are confidential and protected from disclosure pursuant to Federal law. Use, dissemination, or copying of this information is strictly prohibited. If you received this document in error, please erase all copies and attachments and notify the sender immediately.

Customer Responsible to verify all local, state, and any jurisdictional codes and building requirements.



Original Doc. Date  
04/14/2026

Revision Date  
05/07/2026

Revision #  
R1i