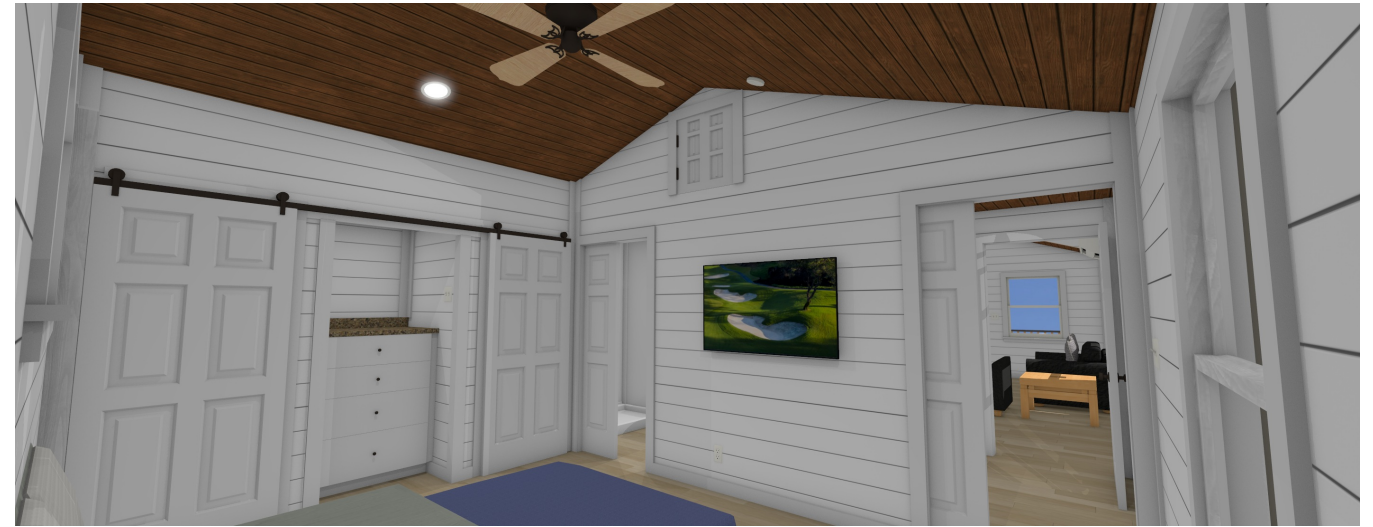




3D Drawing are for illustrational purposes only and do not represent the actually finishes and or fixtures.



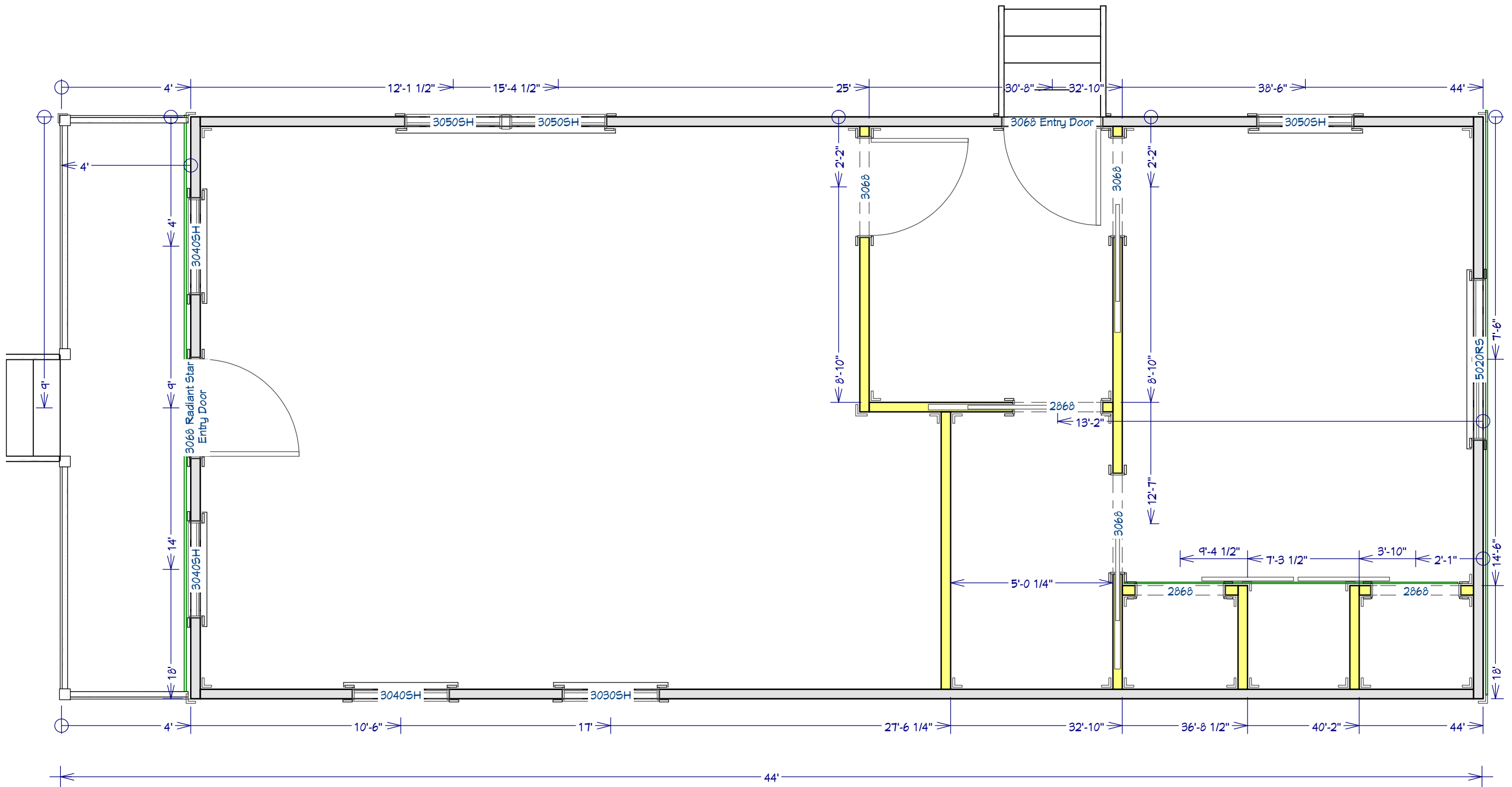
The Remington
18' x 44' Gable Porch Cabin w/Dormer

This document is for illustrational purposes only (it has not been reviewed by an architect or engineer unless otherwise stated in or on this document) and should not be relied on for any purpose other than illustration and general layout of building.
Wolf Valley Buildings, LLC and affiliates assume no liability or responsibility for any mistakes, or errors herein.
All rights reserved by Wolf Valley Buildings, LLC. This document and the information contained herein are confidential and protected from disclosure pursuant to Federal law. Use, dissemination, or copying of this information is strictly prohibited. If you received this document in error, please erase all copies and attachments and notify the sender immediately.
Customer Responsible to verify all local, state, and any jurisdictional codes and building requirements.



WOLF VALLEY BUILDINGS
3461 FM934
Itasca, TX 76055
www.wolfvalleybuildings.com

Original Doc. Date
09/15/2025
Revision Date
10/01/2025
Revision #
R1b



The Remington

18' x 44' Gable Porch Cabin w/Dormer

This document is for illustrational purposes only (it has not been reviewed by an architect or engineer unless otherwise stated in or on this document) and should not be relied on for any purpose other than illustration and general layout of building.

Wolf Valley Buildings, LLC and affiliates assume no liability or responsibility for any mistakes, or errors herein.

All rights reserved by Wolf Valley Buildings, LLC. This document and the information contained herein are confidential and protected from disclosure pursuant to Federal law. Use, dissemination, or copying of this information is strictly prohibited. If you received this document in error, please erase all copies and attachments and notify the sender immediately.

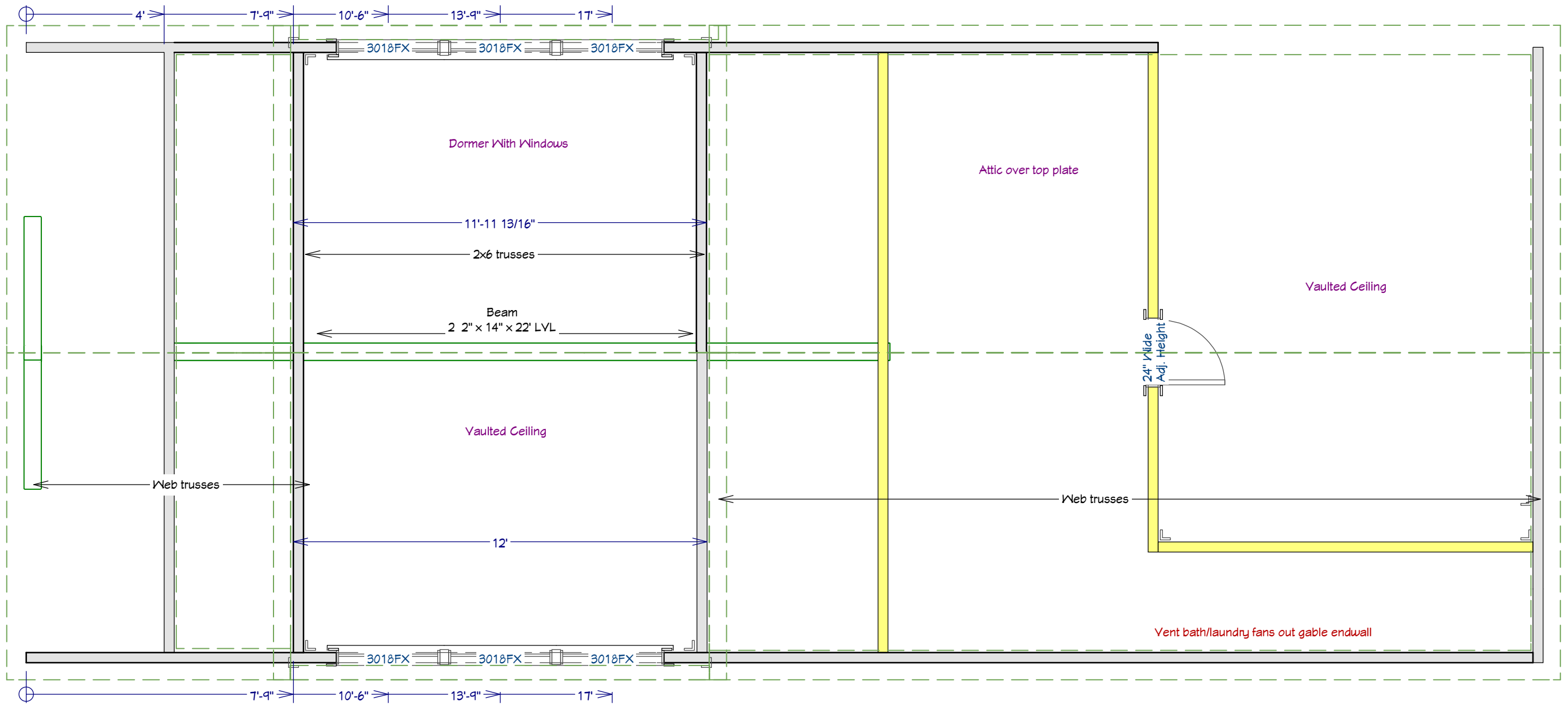
Customer Responsible to verify all local, state, and any jurisdictional codes and building requirements.



Original Doc. Date
09/15/2025

Revision Date
10/01/2025

Revision #
R1b

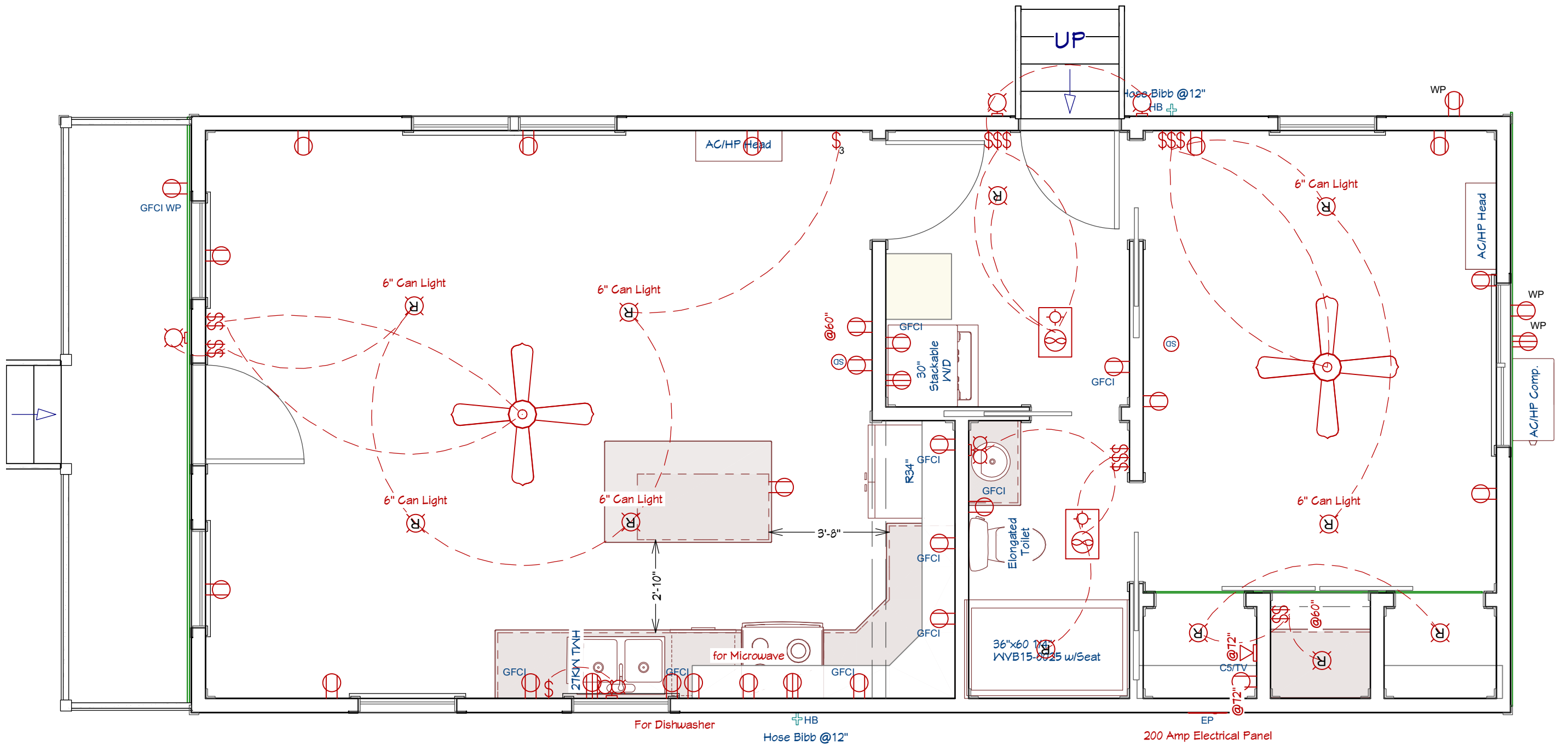


The Remington
 18' x 44' Gable Porch Cabin w/Dormer

This document is for illustrational purposes only (it has not been reviewed by an architect or engineer unless otherwise stated in or on this document) and should not be relied on for any purpose other than illustration and general layout of building.
 Wolf Valley Buildings, LLC and affiliates assume no liability or responsibility for any mistakes, or errors herein.
 All rights reserved by Wolf Valley Buildings, LLC. This document and the information contained herein are confidential and protected from disclosure pursuant to Federal law. Use, dissemination, or copying of this information is strictly prohibited. If you received this document in error, please erase all copies and attachments and notify the sender immediately.
 Customer Responsible to verify all local, state, and any jurisdictional codes and building requirements.



Original Doc. Date
 09/15/2025
 Revision Date
 10/01/2025
 Revision #
 R1b

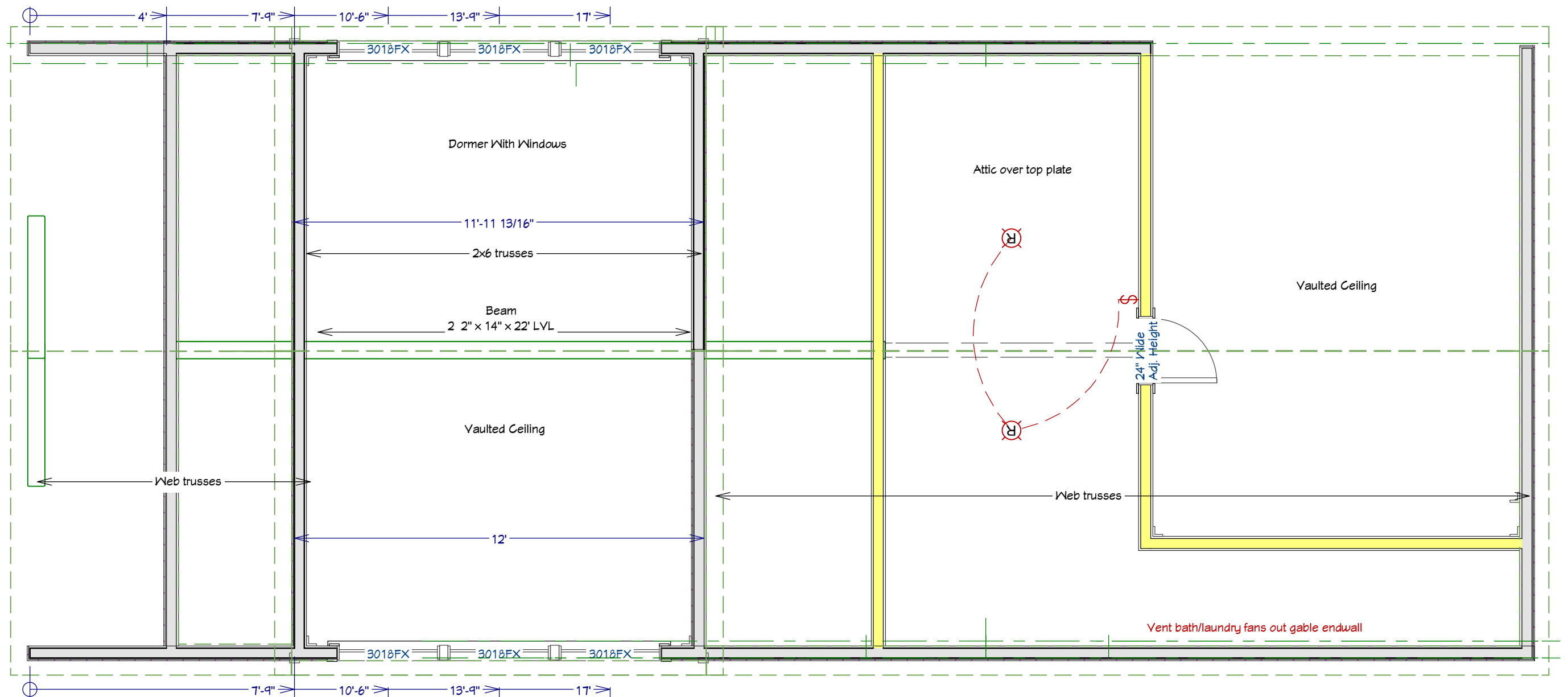


The Remington
 18' x 44' Gable Porch Cabin w/Dormer

This document is for illustrational purposes only (it has not been reviewed by an architect or engineer unless otherwise stated in or on this document) and should not be relied on for any purpose other than illustration and general layout of building.
 Wolf Valley Buildings, LLC and affiliates assume no liability or responsibility for any mistakes, or errors herein.
 All rights reserved by Wolf Valley Buildings, LLC. This document and the information contained herein are confidential and protected from disclosure pursuant to Federal law. Use, dissemination, or copying of this information is strictly prohibited. If you received this document in error, please erase all copies and attachments and notify the sender immediately.
 Customer Responsible to verify all local, state, and any jurisdictional codes and building requirements.



Original Doc. Date
09/15/2025
 Revision Date
10/01/2025
 Revision #
R1b



The Remington
 18' x 44' Gable Porch Cabin w/Dormer

This document is for illustrational purposes only (it has not been reviewed by an architect or engineer unless otherwise stated in or on this document) and should not be relied on for any purpose other than illustration and general layout of building.
 Wolf Valley Buildings, LLC and affiliates assume no liability or responsibility for any mistakes, or errors herein.
 All rights reserved by Wolf Valley Buildings, LLC. This document and the information contained herein are confidential and protected from disclosure pursuant to Federal law. Use, dissemination, or copying of this information is strictly prohibited. If you received this document in error, please erase all copies and attachments and notify the sender immediately.
 Customer Responsible to verify all local, state, and any jurisdictional codes and building requirements.



Original Doc. Date
09/15/2025
 Revision Date
10/01/2025
 Revision #
R1b

Kitchen Cabinets: Bases
 Style: Paint Grade Shaker
 Color: TBD

- 1) 24" x 24" Base
- 2) 36" x 24" Sink Basin
- 3) Dishwasher
- 4) 2" Spacer
- 5) 15" x 24" Drawer Bank
- 6) 36" x 24" Lazy Susan
- 7) 12" x 24" Drawer Bank
- 8) 15" x 24" Trash Bin Pullout
- 9) 24" x 24" Base
- 10) 24" x 24" Base

Kitchen Cabinets: Uppers
 Style: Paint Grade Shaker
 Color: TBD

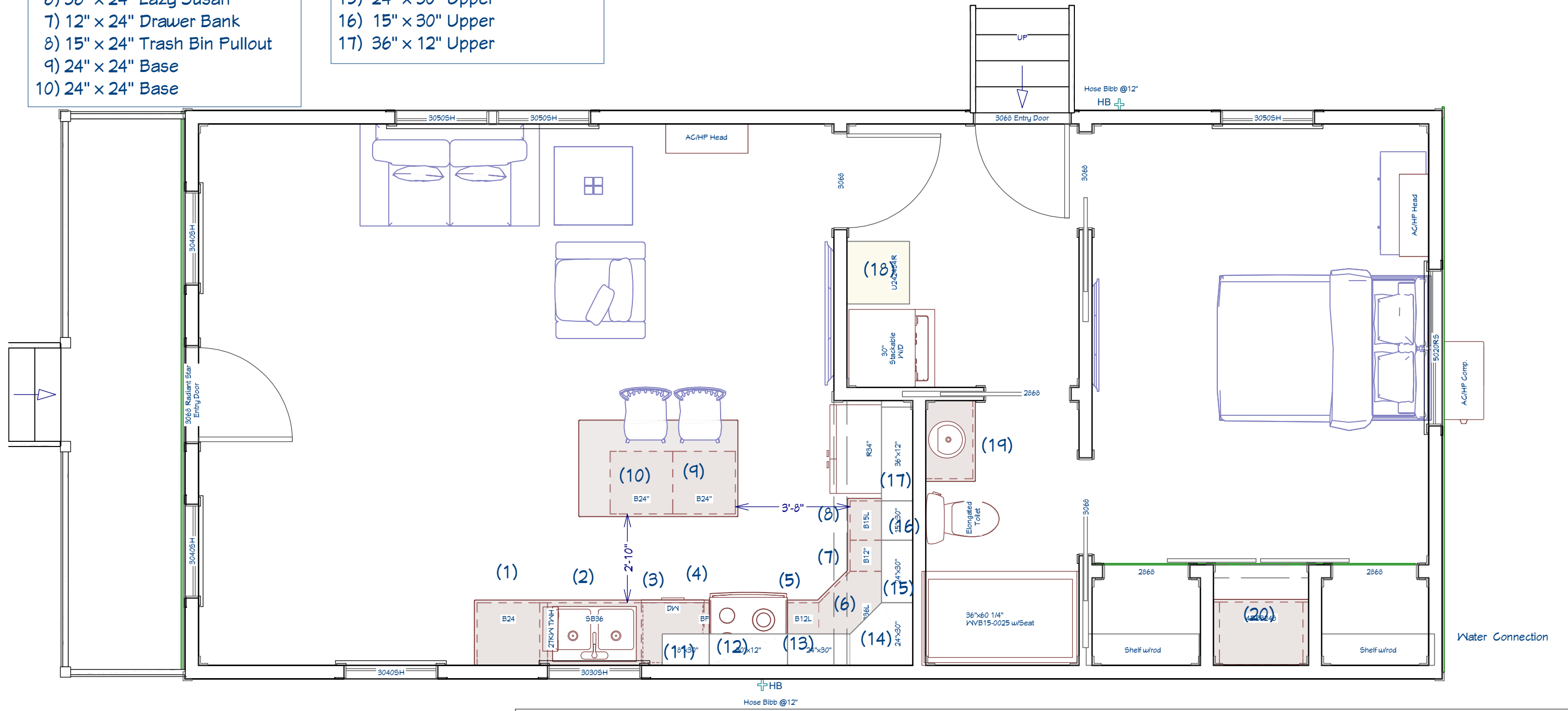
- 11) 18" x 30" Upper
- 12) 30" x 12" Upper
- 13) 27" x 30" Upper
- 14) 24" x 30" Corner Upper
- 15) 24" x 30" Upper
- 16) 15" x 30" Upper
- 17) 36" x 12" Upper

Bathroom/Laundry Cabinets
 Style: Paint Grade Shaker
 Color: TBD

- 18) 24" x 24" x 80" Pantry
- 19) 30" x 18" Vanity

Bathroom/Laundry Cabinets
 Style: Paint Grade Shaker
 Color: TBD

- 20) 32" x 24" x 48" Drawer Bank (4)

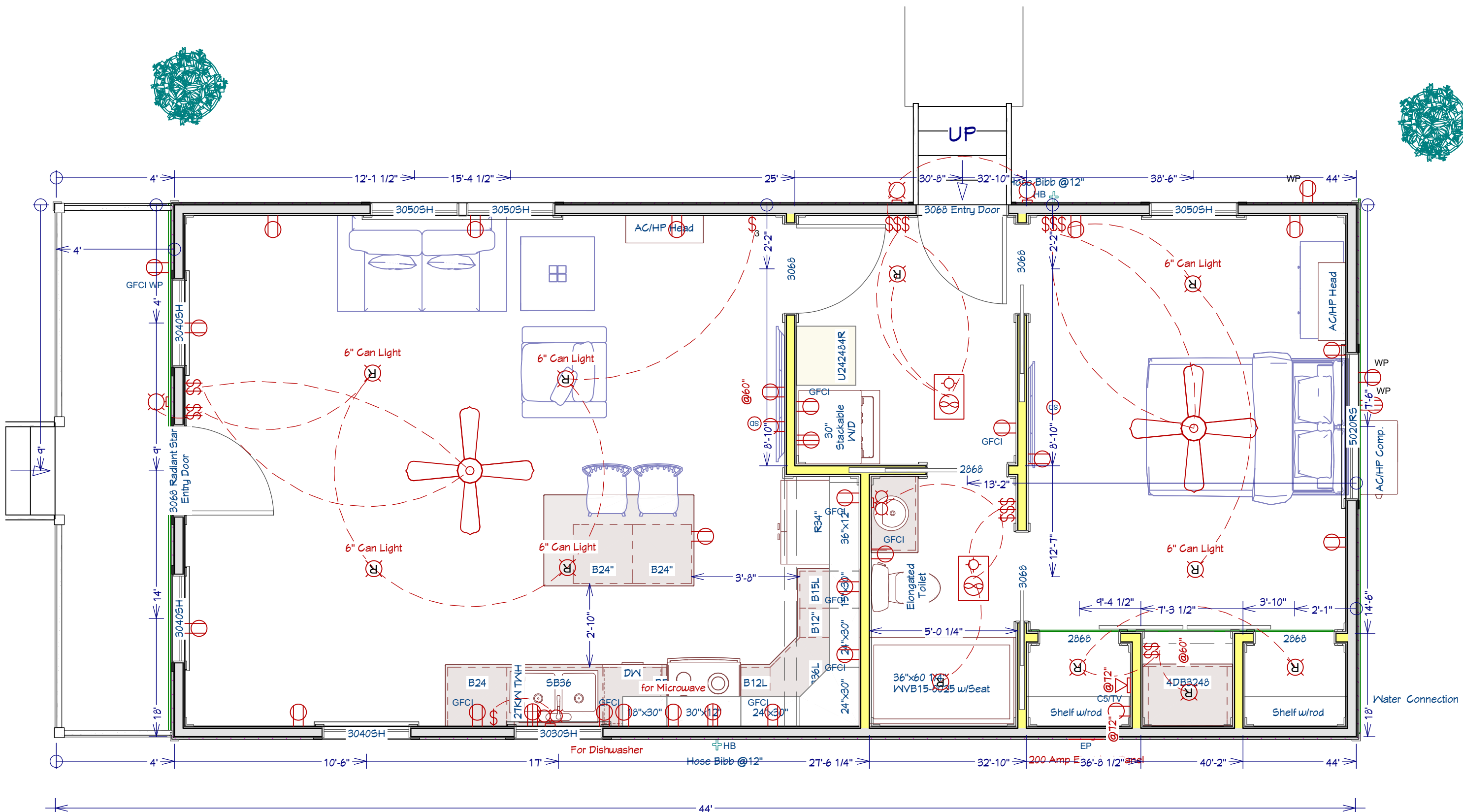


The Remington
 18' x 44' Gable Porch Cabin w/Dormer

This document is for illustrative purposes only. It has not been reviewed by an architect or engineer unless otherwise stated in or on this document and should not be relied on for any purpose other than illustration and general layout of building.
 Wolf Valley Buildings, LLC and affiliates assume no liability or responsibility for any mistakes, or errors herein.
 All rights reserved by Wolf Valley Buildings, LLC. This document and the information contained herein are confidential and protected from disclosure pursuant to Federal law. Use, dissemination, or copying of this information is strictly prohibited. If you received this document in error, please erase all copies and attachments and notify the sender immediately.
 Customer Responsible to verify all local, state, and any jurisdictional codes and building requirements.



Original Doc. Date
 09/15/2025
 Revision Date
 10/01/2025
 Revision #
 R1b



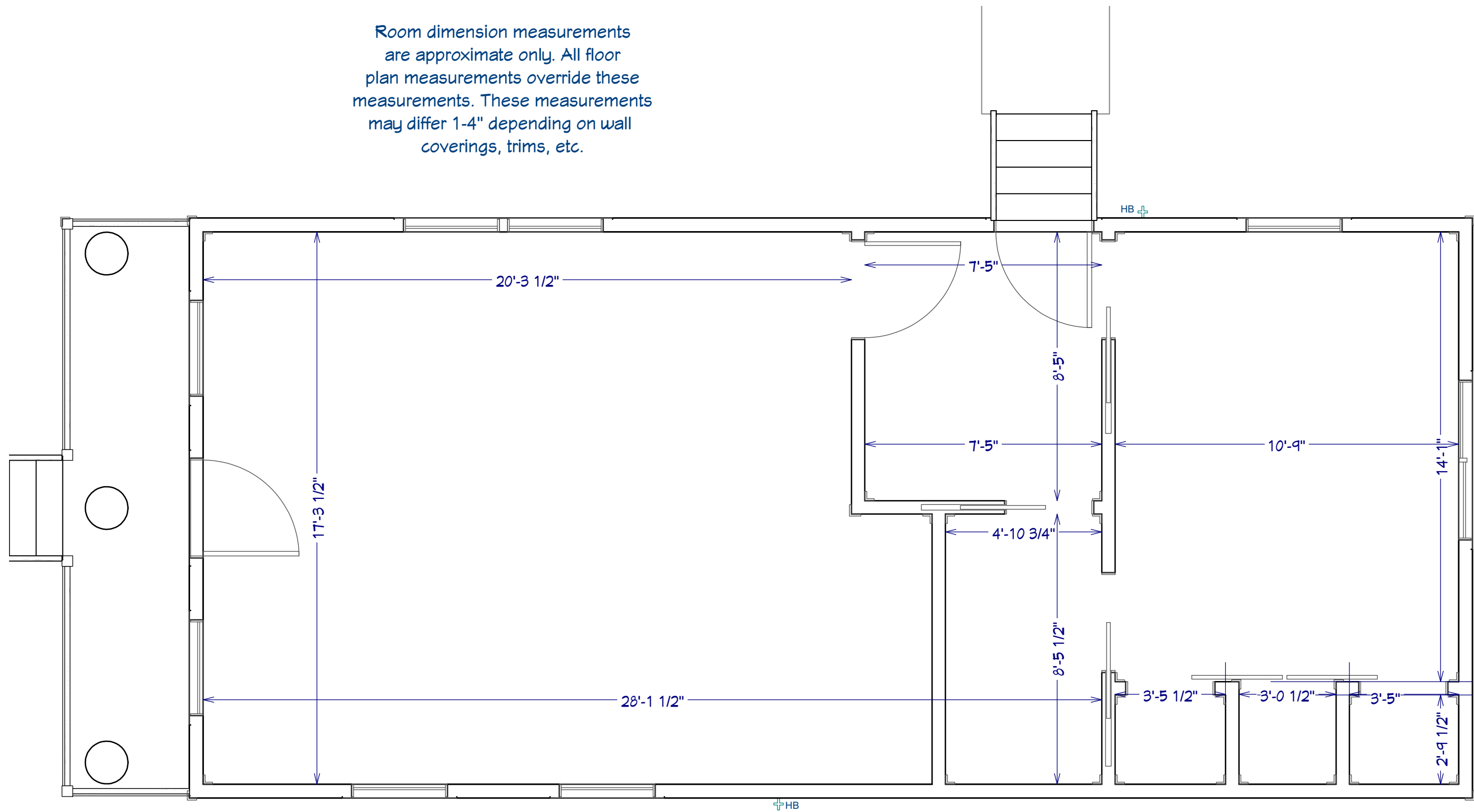
The Remington
 18' x 44' Gable Porch Cabin w/Dormer

This document is for illustrational purposes only (it has not been reviewed by an architect or engineer unless otherwise stated in or on this document) and should not be relied on for any purpose other than illustration and general layout of building.
 Wolf Valley Buildings, LLC and affiliates assume no liability or responsibility for any mistakes, or errors herein.
 All rights reserved by Wolf Valley Buildings, LLC. This document and the information contained herein are confidential and protected from disclosure pursuant to Federal law. Use, dissemination, or copying of this information is strictly prohibited. If you received this document in error, please erase all copies and attachments and notify the sender immediately.
 Customer Responsible to verify all local, state, and any jurisdictional codes and building requirements.



Original Doc. Date
09/15/2025
 Revision Date
10/01/2025
 Revision #
R1b

Room dimension measurements are approximate only. All floor plan measurements override these measurements. These measurements may differ 1-4" depending on wall coverings, trims, etc.



The Remington
 18' x 44' Gable Porch Cabin w/Dormer

This document is for illustrational purposes only (it has not been reviewed by an architect or engineer unless otherwise stated in or on this document) and should not be relied on for any purpose other than illustration and general layout of building.
 Wolf Valley Buildings, LLC and affiliates assume no liability or responsibility for any mistakes, or errors herein.
 All rights reserved by Wolf Valley Buildings, LLC. This document and the information contained herein are confidential and protected from disclosure pursuant to Federal law. Use, dissemination, or copying of this information is strictly prohibited. If you received this document in error, please erase all copies and attachments and notify the sender immediately.
 Customer Responsible to verify all local, state, and any jurisdictional codes and building requirements.



Original Doc. Date
 04/15/2025
 Revision Date
 10/01/2025
 Revision #
 R1b