



3D Drawing are for illustrational purposes only and do not represent the actually finishes and or fixtures.

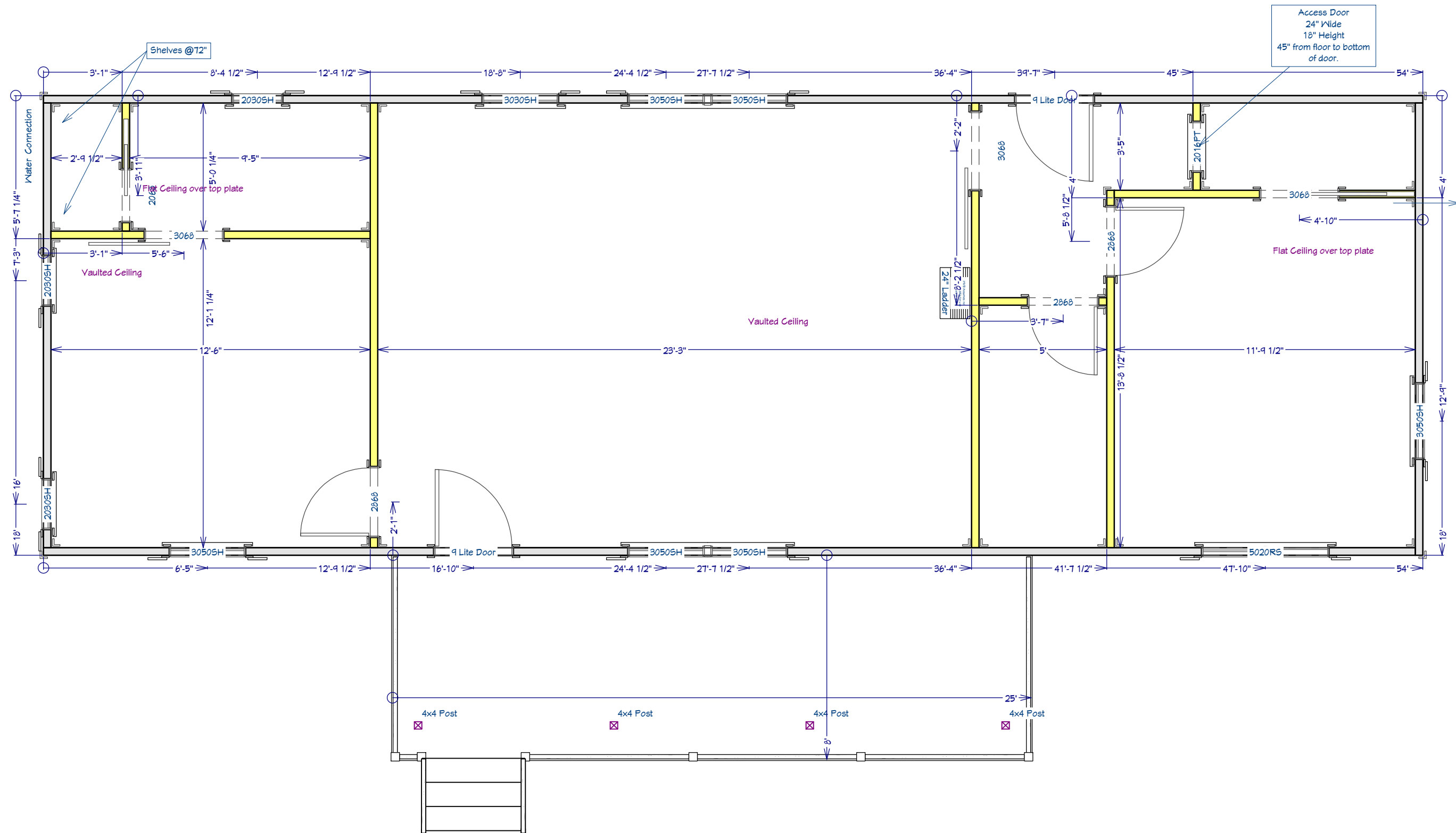


**The Saddlehorn**  
 18' x 54' Gable Cabin w/Dormers

This document is for illustrational purposes only (it has not been reviewed by an architect or engineer unless otherwise stated in or on this document) and should not be relied on for any purpose other than illustration and general layout of building.  
 Wolf Valley Buildings, LLC and affiliates assume no liability or responsibility for any mistakes, or errors herein.  
 All rights reserved by Wolf Valley Buildings, LLC. This document and the information contained herein are confidential and protected from disclosure pursuant to Federal law. Use, dissemination, or copying of this information is strictly prohibited. If you received this document in error, please erase all copies and attachments and notify the sender immediately.  
 Customer Responsible to verify all local, state, and any jurisdictional codes and building requirements.



Original Doc. Date  
01/09/2026  
 Revision Date  
01/09/2026  
 Revision #  
R1a



# The Saddlehorn

## 18' x 54' Gable Cabin w/Dormers

This document is for illustrational purposes only (it has not been reviewed by an architect or engineer unless otherwise stated in or on this document) and should not be relied on for any purpose other than illustration and general layout of building.

Wolf Valley Buildings, LLC and affiliates assume no liability or responsibility for any mistakes, or errors herein.

All rights reserved by Wolf Valley Buildings, LLC. This document and the information contained herein are confidential and protected from disclosure pursuant to Federal law. Use, dissemination, or copying of this information is strictly prohibited. If you received this document in error, please erase all copies and attachments and notify the sender immediately.

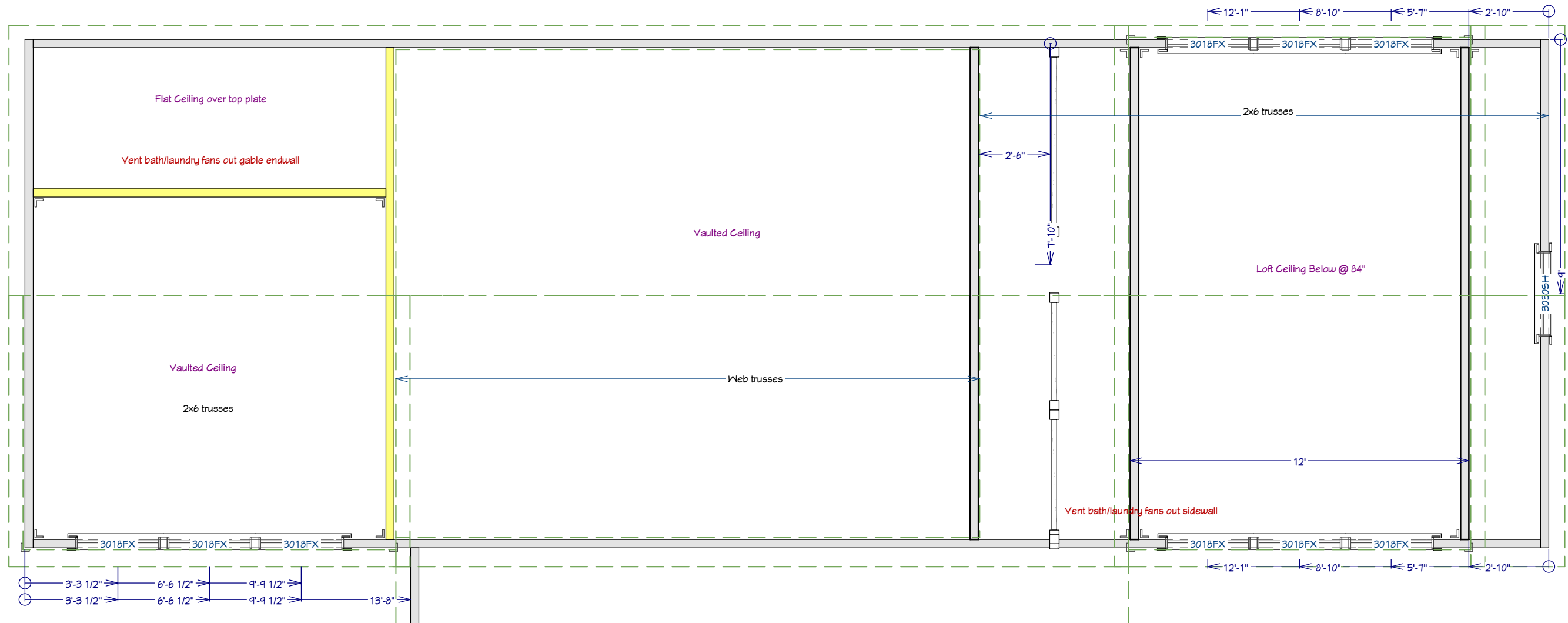
Customer Responsible to verify all local, state, and any jurisdictional codes and building requirements.



Original Doc. Date  
01/09/2026

Revision Date  
01/09/2026

Revision #  
R1a



# The Saddlehorn

## 18' x 54' Gable Cabin w/Dormers

This document is for illustrative purposes only (it has not been reviewed by an architect or engineer unless otherwise stated in or on this document) and should not be relied on for any purpose other than illustration and general layout of building.

Wolf Valley Buildings, LLC and affiliates assume no liability or responsibility for any mistakes, or errors herein.

All rights reserved by Wolf Valley Buildings, LLC. This document and the information contained herein are confidential and protected from disclosure pursuant to Federal law. Use, dissemination, or copying of this information is strictly prohibited. If you received this document in error, please erase all copies and attachments and notify the sender immediately.

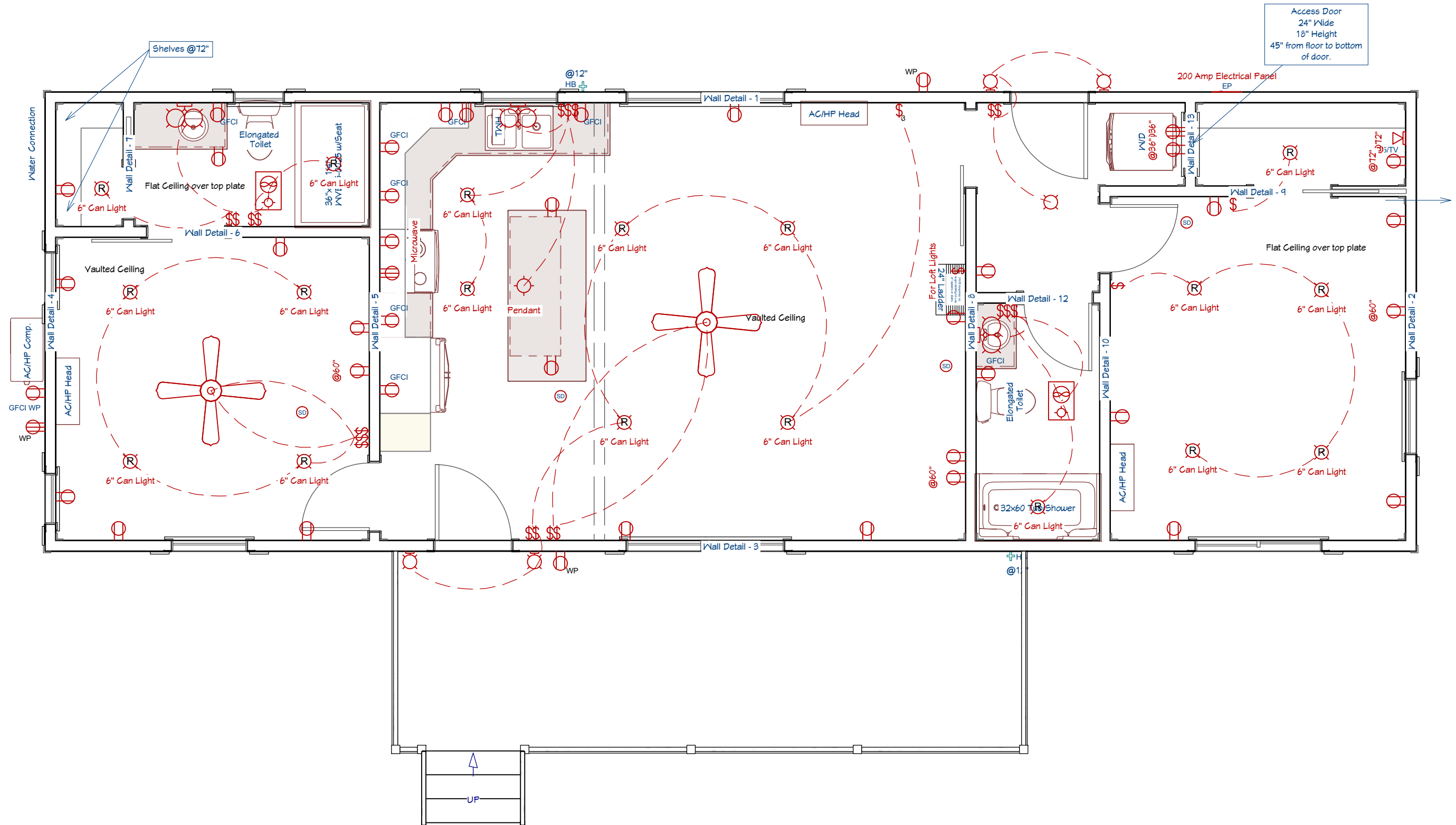
Customer Responsible to verify all local, state, and any jurisdictional codes and building requirements.



Original Doc. Date  
01/09/2026

Revision Date  
01/09/2026

Revision #  
R1a



# The Saddlehorn

18' x 54' Gable Cabin w/Dormers

This document is for illustrative purposes only (it has not been reviewed by an architect or engineer unless otherwise stated in or on this document) and should not be relied on for any purpose other than illustration and general layout of building.

Wolf Valley Buildings, LLC and affiliates assume no liability or responsibility for any mistakes, or errors herein.

All rights reserved by Wolf Valley Buildings, LLC. This document and the information contained herein are confidential and protected from disclosure pursuant to Federal law. Use, dissemination, or copying of this information is strictly prohibited. If you received this document in error, please erase all copies and attachments and notify the sender immediately.

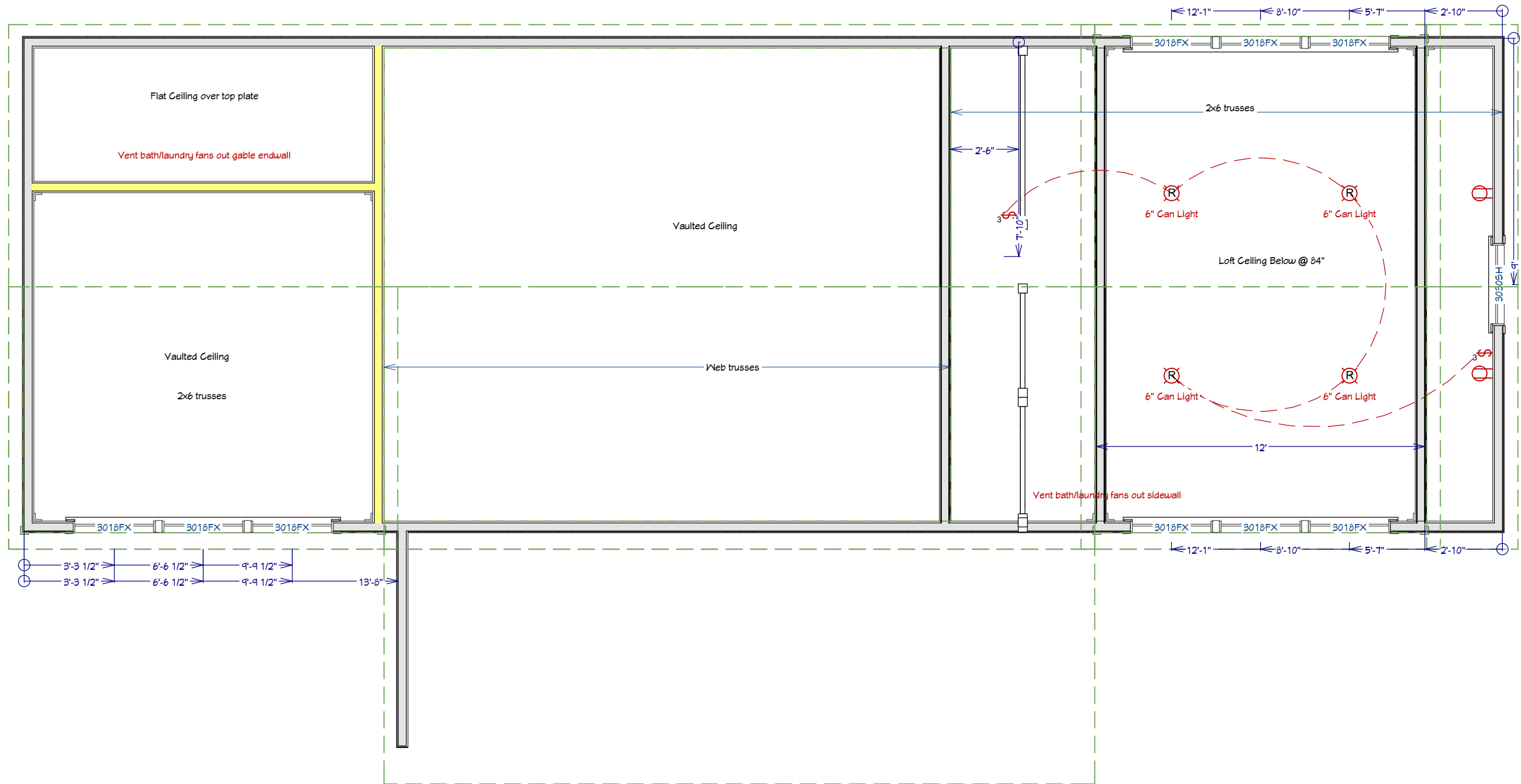
Customer Responsible to verify all local, state, and any jurisdictional codes and building requirements.



Original Doc. Date  
01/09/2026

Revision Date  
01/09/2026

Revision #  
R1a



# The Saddlehorn

## 18' x 54' Gable Cabin w/Dormers

This document is for illustrational purposes only (it has not been reviewed by an architect or engineer unless otherwise stated in or on this document) and should not be relied on for any purpose other than illustration and general layout of building.

Wolf Valley Buildings, LLC and affiliates assume no liability or responsibility for any mistakes, or errors herein.

All rights reserved by Wolf Valley Buildings, LLC. This document and the information contained herein are confidential and protected from disclosure pursuant to Federal law. Use, dissemination, or copying of this information is strictly prohibited. If you received this document in error, please erase all copies and attachments and notify the sender immediately.

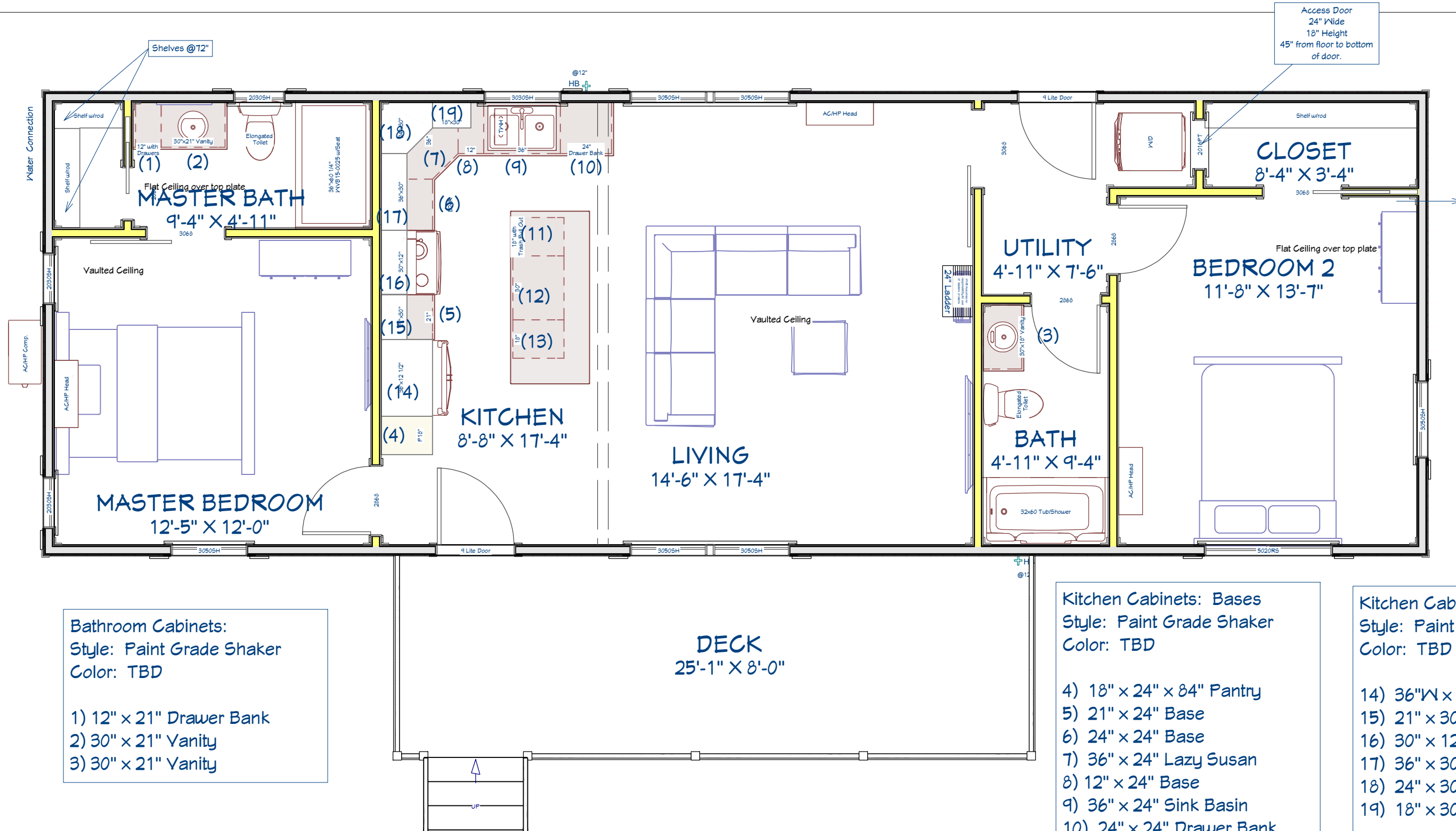
Customer Responsible to verify all local, state, and any jurisdictional codes and building requirements.



Original Doc. Date  
01/09/2026

Revision Date  
01/09/2026

Revision #  
R1a



Access Door  
24" Wide  
18" Height  
45" from floor to bottom  
of door.

**Bathroom Cabinets:**  
Style: Paint Grade Shaker  
Color: TBD

1) 12" x 21" Drawer Bank  
2) 30" x 21" Vanity  
3) 30" x 21" Vanity

**Kitchen Cabinets: Bases**  
Style: Paint Grade Shaker  
Color: TBD

4) 18" x 24" x 84" Pantry  
5) 21" x 24" Base  
6) 24" x 24" Base  
7) 36" x 24" Lazy Susan  
8) 12" x 24" Base  
9) 36" x 24" Sink Basin  
10) 24" x 24" Drawer Bank  
11) 18" x 24" Base w/Trash  
Pull Out  
12) 30" x 24" Base  
13) 24" x 24" Base

**Kitchen Cabinets: Bases**  
Style: Paint Grade Shaker  
Color: TBD

14) 36"W x 12"H x 24"D Upper  
15) 21" x 30" Upper  
16) 30" x 12" Upper  
17) 36" x 30" Upper  
18) 24" x 30" Corner Upper  
19) 18" x 30" Upper

**The Saddlehorn**  
18' x 54' Gable Cabin w/Dormers

This document is for illustrational purposes only (it has not been reviewed by an architect or engineer unless otherwise stated in or on this document) and should not be relied on for any purpose other than illustration and general layout of building.

Wolf Valley Buildings, LLC and affiliates assume no liability or responsibility for any mistakes, or errors herein.

All rights reserved by Wolf Valley Buildings, LLC. This document and the information contained herein are confidential and protected from disclosure pursuant to Federal law. Use, dissemination, or copying of this information is strictly prohibited. If you received this document in error, please erase all copies and attachments and notify the sender immediately.

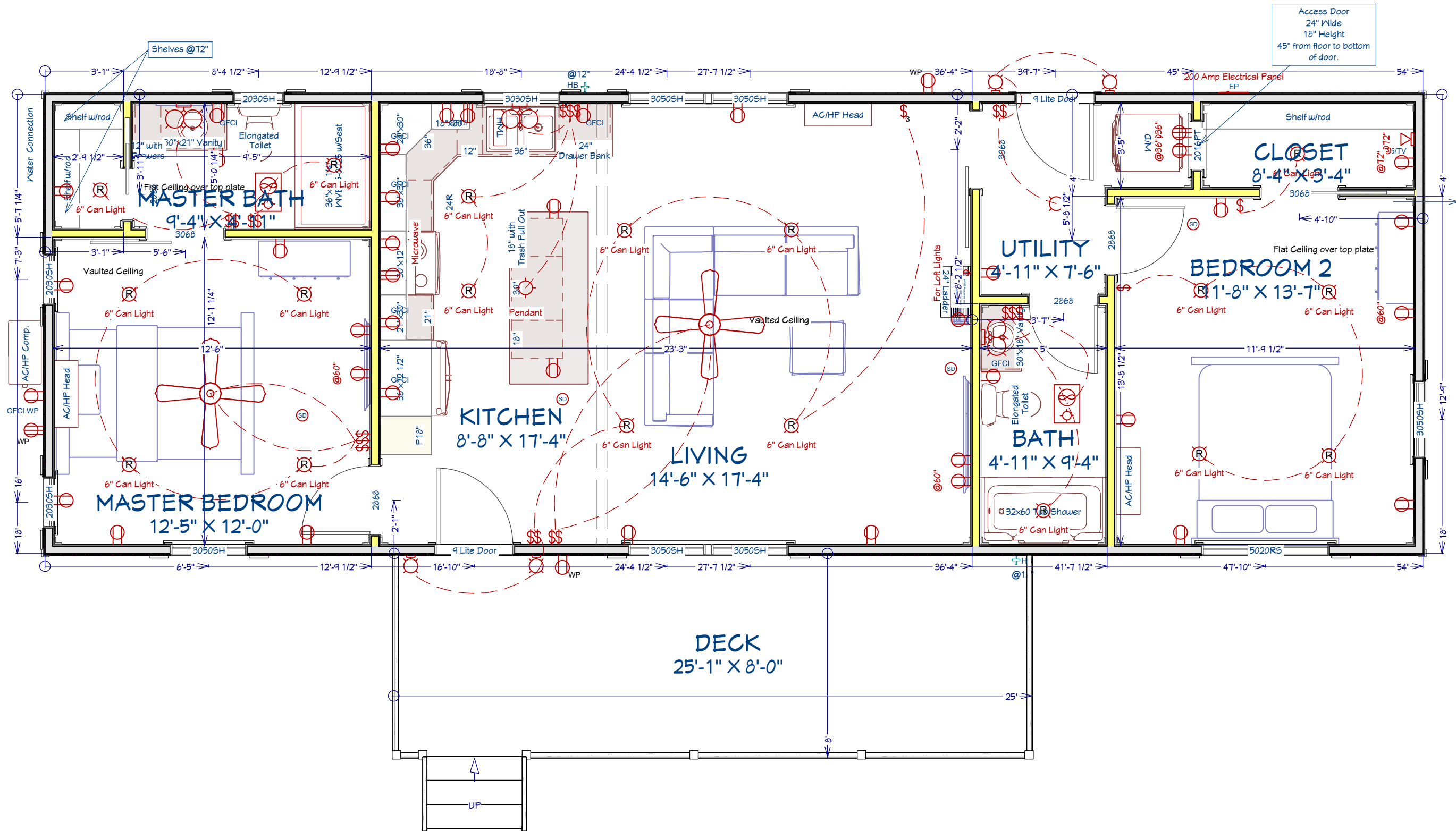
Customer Responsible to verify all local, state, and any jurisdictional codes and building requirements.



Original Doc. Date  
01/09/2026

Revision Date  
01/09/2026

Revision #  
R1a

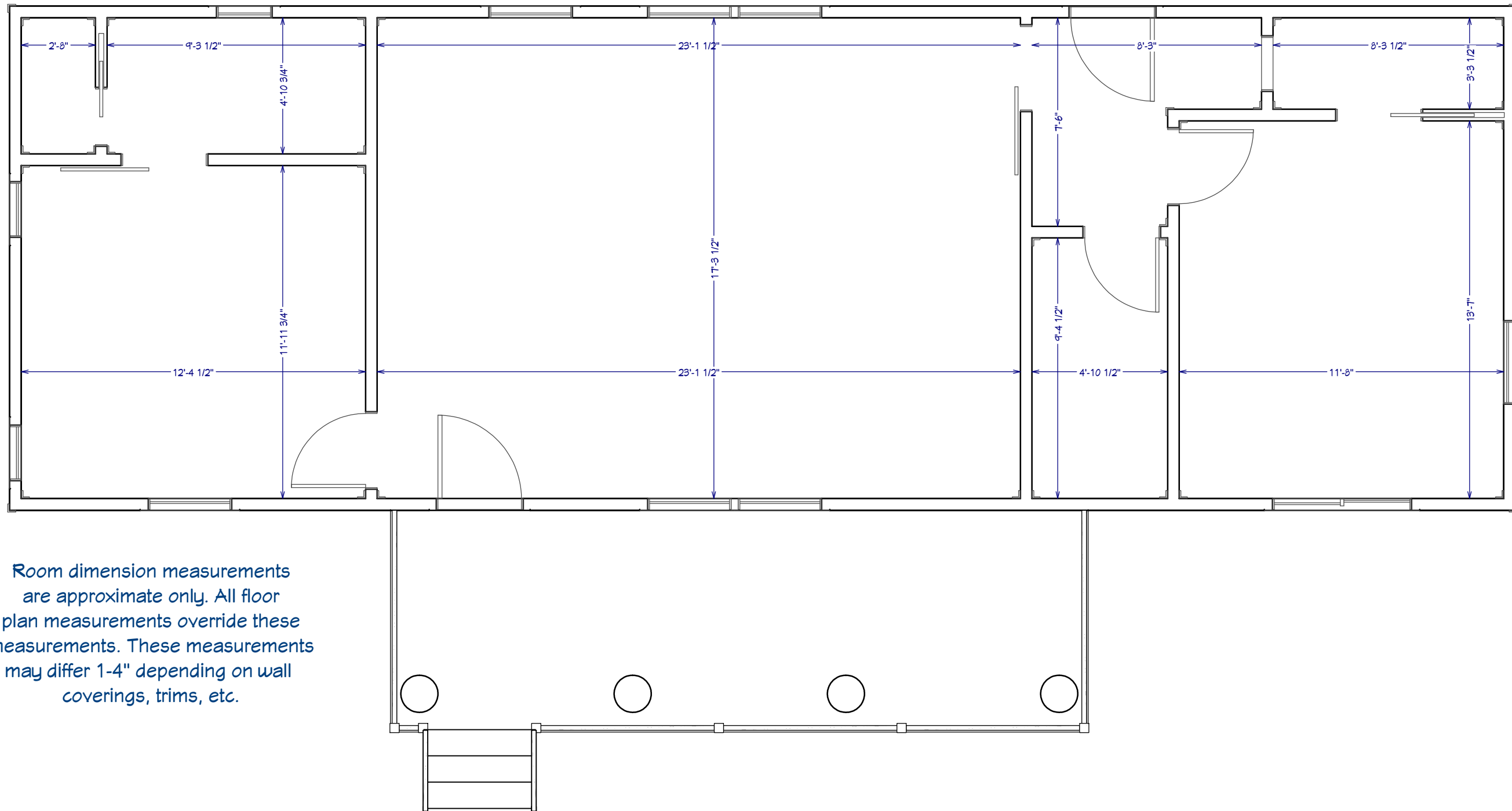


**The Saddlehorn**  
 18' x 54' Gable Cabin w/Dormers

This document is for illustrative purposes only. It has not been reviewed by an architect or engineer unless otherwise stated in or on this document and should not be relied on for any purpose other than illustration and general layout of building.  
 Wolf Valley Buildings, LLC and affiliates assume no liability or responsibility for any mistakes, or errors herein.  
 All rights reserved by Wolf Valley Buildings, LLC. This document and the information contained herein are confidential and protected from disclosure pursuant to Federal law. Use, dissemination, or copying of this information is strictly prohibited. If you received this document in error, please erase all copies and attachments and notify the sender immediately.  
 Customer Responsible to verify all local, state, and any jurisdictional codes and building requirements.



Original Doc. Date  
 01/09/2026  
 Revision Date  
 01/09/2026  
 Revision #  
 R1a



Room dimension measurements are approximate only. All floor plan measurements override these measurements. These measurements may differ 1-4" depending on wall coverings, trims, etc.

**The Saddlehorn**  
 18' x 54' Gable Cabin w/Dormers

This document is for illustrational purposes only (it has not been reviewed by an architect or engineer unless otherwise stated in or on this document) and should not be relied on for any purpose other than illustration and general layout of building.  
 Wolf Valley Buildings, LLC and affiliates assume no liability or responsibility for any mistakes, or errors herein.  
 All rights reserved by Wolf Valley Buildings, LLC. This document and the information contained herein are confidential and protected from disclosure pursuant to Federal law. Use, dissemination, or copying of this information is strictly prohibited. If you received this document in error, please erase all copies and attachments and notify the sender immediately.  
 Customer Responsible to verify all local, state, and any jurisdictional codes and building requirements.



Original Doc. Date  
01/09/2026  
 Revision Date  
01/09/2026  
 Revision #  
R1a

Room Dimensions  
 Page 8 of 8