



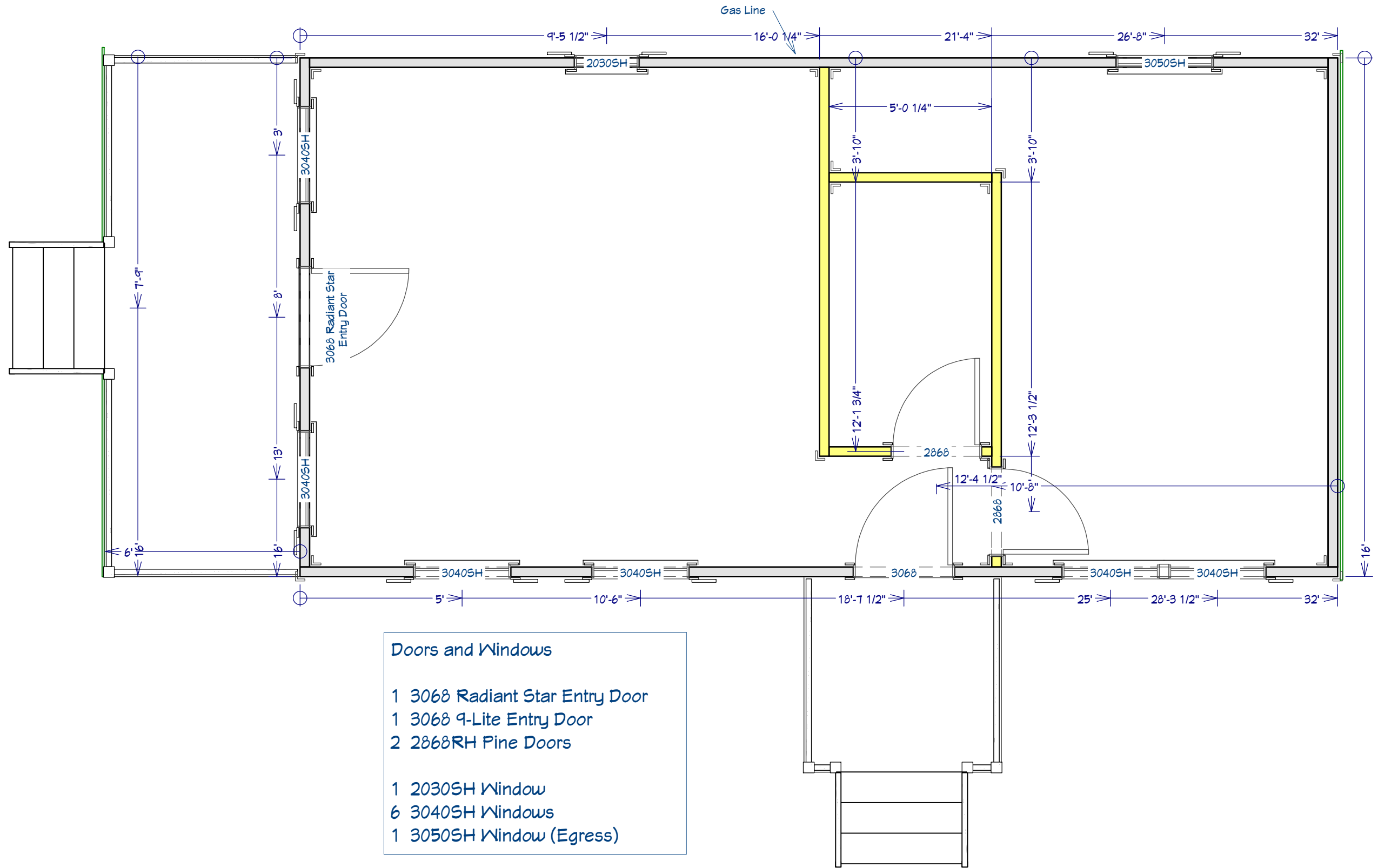
3D Drawing are for illustrational purposes only and do not represent the actually finishes and or fixtures.

The Silver Spur
 16' x 38' Side Utility Cabin w/Decks

This document is for illustrational purposes only. It has not been reviewed by an architect or engineer unless otherwise stated in or on this document and should not be relied on for any purpose other than illustration and general layout of building.
 Wolf Valley Buildings, LLC and affiliates assume no liability or responsibility for any mistakes, or errors herein.
 All rights reserved by Wolf Valley Buildings, LLC. This document and the information contained herein are confidential and protected from disclosure pursuant to Federal law. Use, dissemination, or copying of this information is strictly prohibited. If you received this document in error, please erase all copies and attachments and notify the sender immediately.
 Customer Responsible to verify all local, state, and any jurisdictional codes and building requirements.



Original Doc. Date
 01/08/2026
 Revision Date
 03/02/2026
 Revision #
 R1d



- Doors and Windows**
- 1 3068 Radiant Star Entry Door
 - 1 3068 9-Lite Entry Door
 - 2 2868RH Pine Doors
 - 1 2030SH Window
 - 6 3040SH Windows
 - 1 3050SH Window (Egress)

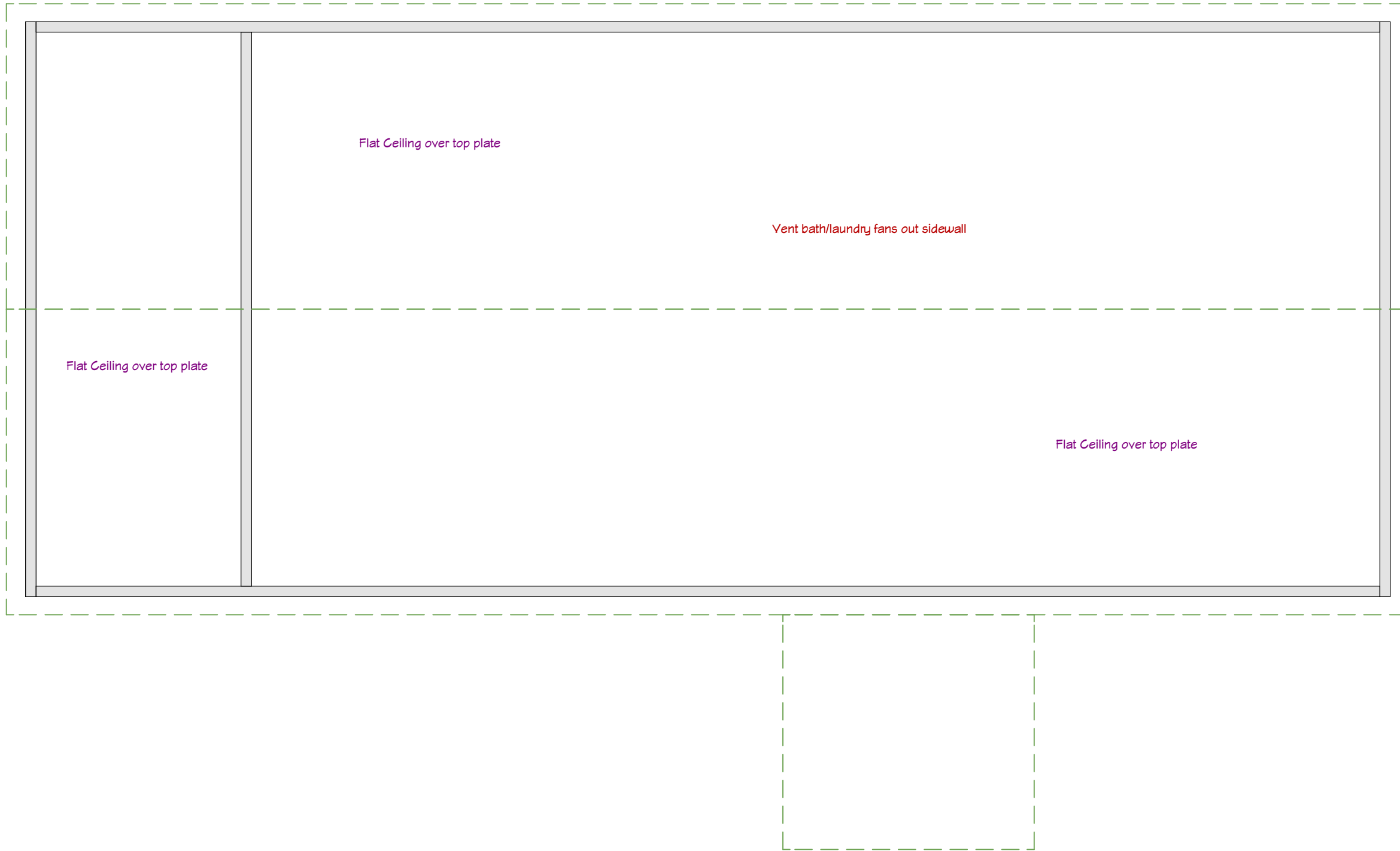
The Silver Spur
 16' x 38' Side Utility Cabin w/Decks

This document is for illustrative purposes only (it has not been reviewed by an architect or engineer unless otherwise stated in or on this document) and should not be relied on for any purpose other than illustration and general layout of building.
 Wolf Valley Buildings, LLC and affiliates assume no liability or responsibility for any mistakes, or errors herein.
 All rights reserved by Wolf Valley Buildings, LLC. This document and the information contained herein are confidential and protected from disclosure pursuant to Federal law. Use, dissemination, or copying of this information is strictly prohibited. If you received this document in error, please erase all copies and attachments and notify the sender immediately.
 Customer Responsible to verify all local, state, and any jurisdictional codes and building requirements.



Original Doc. Date
01/08/2026
 Revision Date
03/02/2026
 Revision #
R1d

Framing
 Page 2 of 8



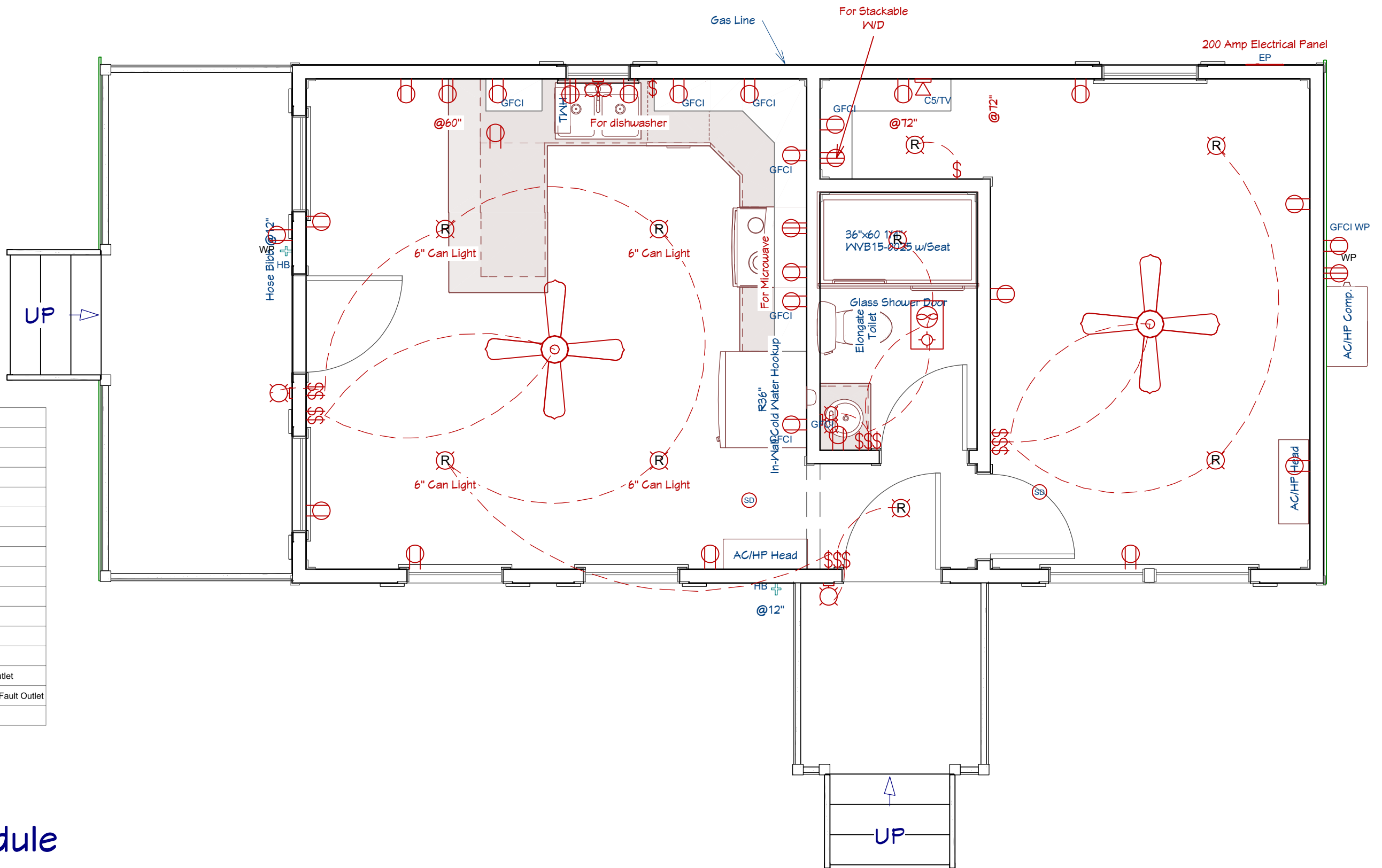
The Silver Spur
 16' x 38' Side Utility Cabin w/Decks

This document is for illustrational purposes only (it has not been reviewed by an architect or engineer unless otherwise stated in or on this document) and should not be relied on for any purpose other than illustration and general layout of building.
 Wolf Valley Buildings, LLC and affiliates assume no liability or responsibility for any mistakes, or errors herein.
 All rights reserved by Wolf Valley Buildings, LLC. This document and the information contained herein are confidential and protected from disclosure pursuant to Federal law. Use, dissemination, or copying of this information is strictly prohibited. If you received this document in error, please erase all copies and attachments and notify the sender immediately.
 Customer Responsible to verify all local, state, and any jurisdictional codes and building requirements.



Original Doc. Date
 01/08/2026
 Revision Date
 03/02/2026
 Revision #
 R1d

\$\$\$	2 Gang Switch	⊙	Outlet
⊙	220V Outlet	⊙	Pendant Light
\$\$\$	3 Gang Switch	⊙	Porch Light
⊙	Bare Bulb	⊙	Recessed Light
CAT Stubout	CAT Line Stubout	⊙	Sconce Light
CAT6 @12	CAT6 w/TV	⊙	Smoke Detector
⊙	Ceiling Fan	⊙	Smoke Detector
⊙	Chandelier	⊙	Spot Light
⊙	CO Detector	⊙	Switch
⊙	Electrical Connection	⊙	Three Way Switch
EP	Electrical Panel Box	⊙	Through Wall Fan
⊙	Exhaust Fan	⊙	Under Cabinet Light
⊙	Exhaust Fan - Range	⊙	Vanity Light
⊙	Flush Mount Light	⊙	Water Proof 220V Outlet
⊙	Four Way Switch	⊙	Water Proof Ground Fault Outlet
GFCI	Ground Fault Outlet	⊙	Water Proof Outlet



Electrical Schedule

The Silver Spur
16' x 38' Side Utility Cabin w/Decks

This document is for illustrative purposes only (it has not been reviewed by an architect or engineer unless otherwise stated in or on this document) and should not be relied on for any purpose other than illustration and general layout of building.
Wolf Valley Buildings, LLC and affiliates assume no liability or responsibility for any mistakes, or errors herein.
All rights reserved by Wolf Valley Buildings, LLC. This document and the information contained herein are confidential and protected from disclosure pursuant to Federal law. Use, dissemination, or copying of this information is strictly prohibited. If you received this document in error, please erase all copies and attachments and notify the sender immediately.
Customer Responsible to verify all local, state, and any jurisdictional codes and building requirements.



WOLF VALLEY
BUILDINGS

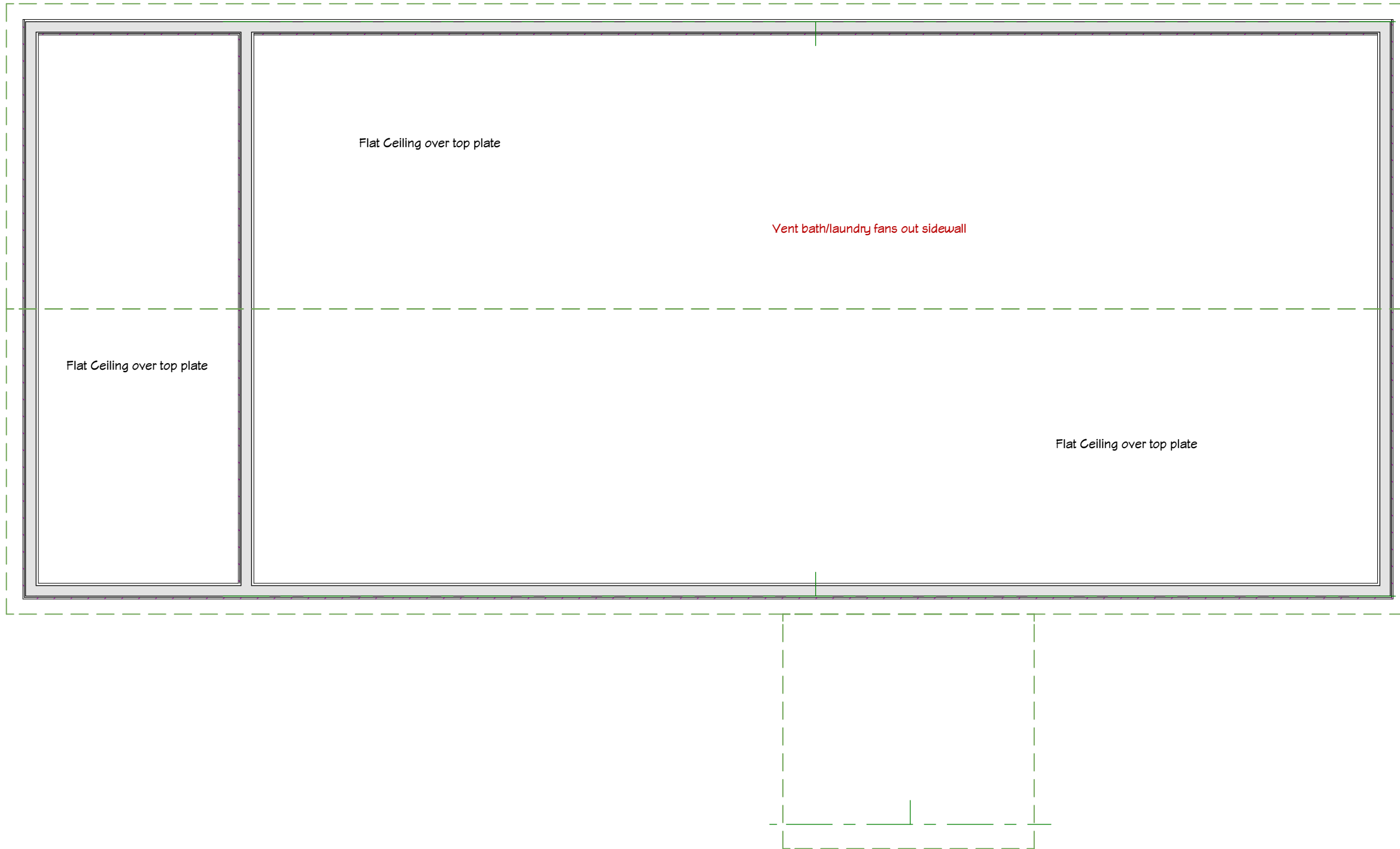
3461 FM934
Itasca, TX 76055
www.wolfvalleybuildings.com

Original Doc. Date
01/08/2026

Revision Date
03/02/2026

Revision #
R1d

Electrical
Page 4 of 8

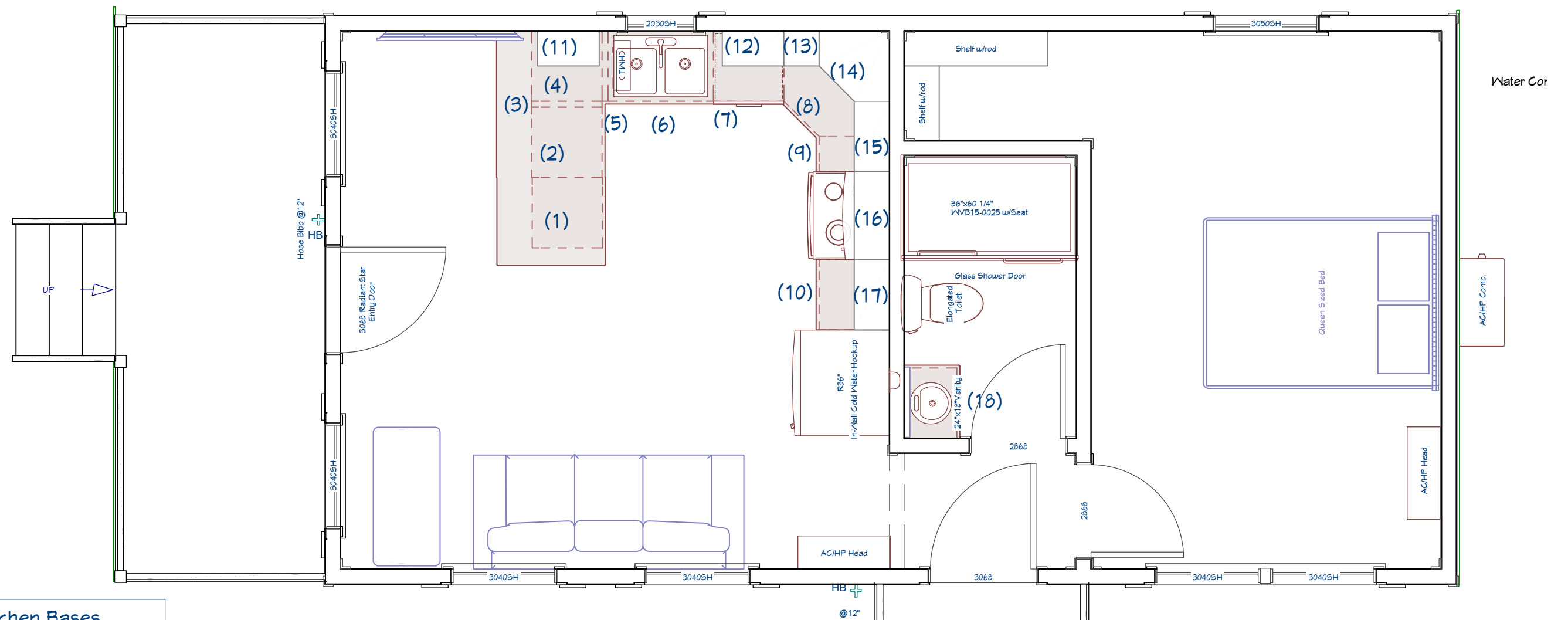


The Silver Spur
 16' x 38' Side Utility Cabin w/Decks

This document is for illustrational purposes only (it has not been reviewed by an architect or engineer unless otherwise stated in or on this document) and should not be relied on for any purpose other than illustration and general layout of building.
 Wolf Valley Buildings, LLC and affiliates assume no liability or responsibility for any mistakes, or errors herein.
 All rights reserved by Wolf Valley Buildings, LLC. This document and the information contained herein are confidential and protected from disclosure pursuant to Federal law. Use, dissemination, or copying of this information is strictly prohibited. If you received this document in error, please erase all copies and attachments and notify the sender immediately.
 Customer Responsible to verify all local, state, and any jurisdictional codes and building requirements.



Original Doc. Date
 01/08/2026
 Revision Date
 03/02/2026
 Revision #
 R1d



Cabinets: Kitchen Bases
 Style: Paint Grade Shaker
 Color: NY Light Gray

- 1) 24" x 24" Base
- 2) 24" x 24" Base
- 3) 2" Base Filler
- 4) 24" x 24" Base (No Drawer - facing front window)
- 5) 2" Base Filler
- 6) 36" x 24" Sink Basin
- 7) Dishwasher
- 8) 36" x 24" Lazy Susan
- 9) 12" x 24" Drawer Bank
- 10) 24" x 24" Base

Cabinets: Kitchen Uppers
 Style: Paint Grade Shaker
 Color: NY Light Gray

- 11) 21" x 30" Upper
- 12) 21" x 30" Upper
- 13) 12" x 30" Upper
- 14) 24" x 30" Corner Upper
- 15) 24" x 30" Upper
- 16) 30" x 12" Upper
- 17) 24" x 30" Upper

Cabinets: Bathroom
 Style: Paint Grade Shaker
 Color: NY Light Gray

- 18) 24" x 18" Vanity

The Silver Spur

16' x 38' Side Utility Cabin w/Decks

This document is for illustrational purposes only (it has not been reviewed by an architect or engineer unless otherwise stated in or on this document) and should not be relied on for any purpose other than illustration and general layout of building.

Wolf Valley Buildings, LLC and affiliates assume no liability or responsibility for any mistakes, or errors herein.

All rights reserved by Wolf Valley Buildings, LLC. This document and the information contained herein are confidential and protected from disclosure pursuant to Federal law. Use, dissemination, or copying of this information is strictly prohibited. If you received this document in error, please erase all copies and attachments and notify the sender immediately.

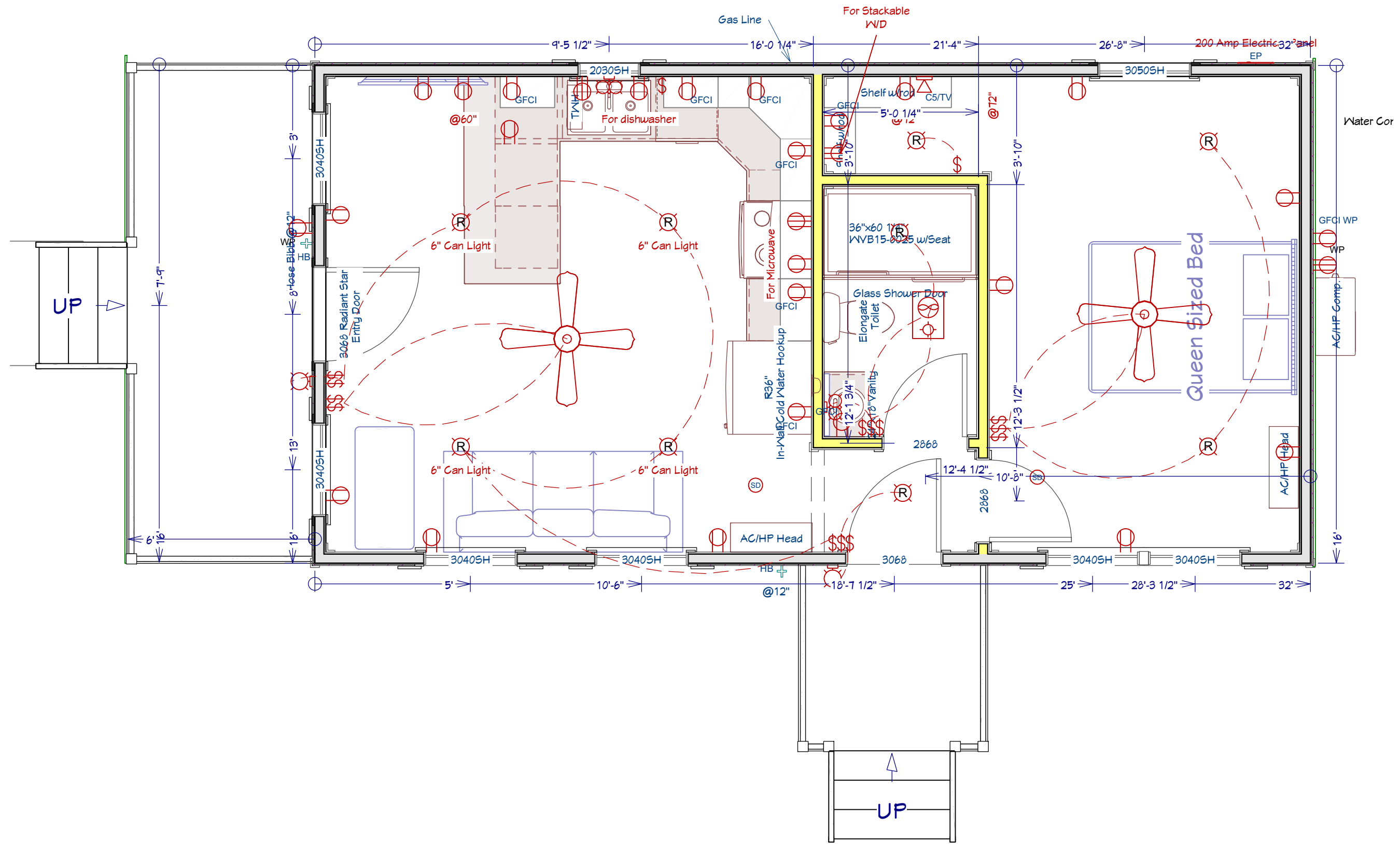
Customer Responsible to verify all local, state, and any jurisdictional codes and building requirements.



Original Doc. Date
01/08/2026

Revision Date
03/02/2026

Revision #
R1d



The Silver Spur
 16' x 38' Side Utility Cabin w/Decks

This document is for illustrative purposes only. It has not been reviewed by an architect or engineer unless otherwise stated in or on this document and should not be relied on for any purpose other than illustration and general layout of building.

Wolf Valley Buildings, LLC and affiliates assume no liability or responsibility for any mistakes, or errors herein.

All rights reserved by Wolf Valley Buildings, LLC. This document and the information contained herein are confidential and protected from disclosure pursuant to Federal law. Use, dissemination, or copying of this information is strictly prohibited. If you received this document in error, please erase all copies and attachments and notify the sender immediately.

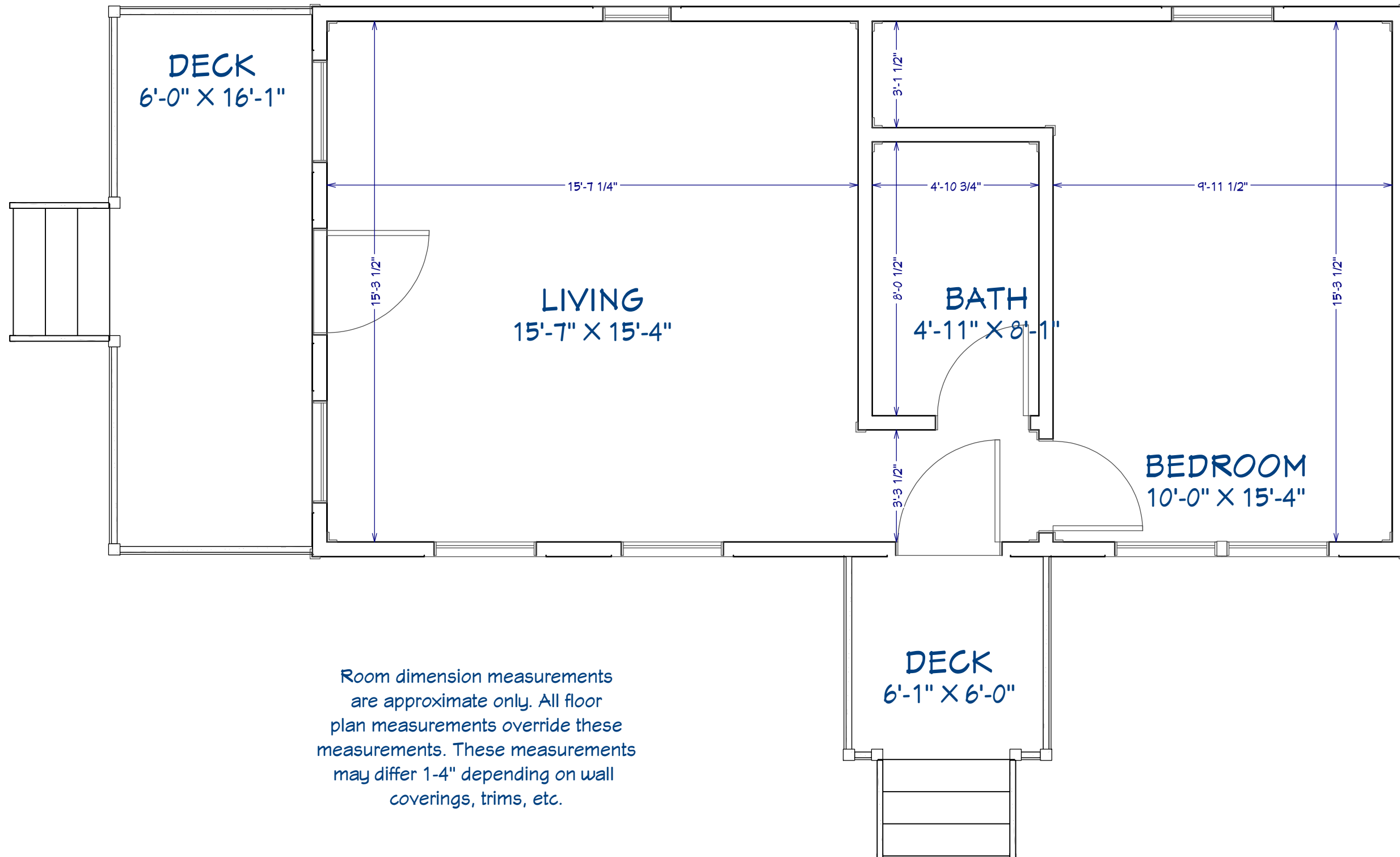
Customer Responsible to verify all local, state, and any jurisdictional codes and building requirements.



Original Doc. Date
 01/08/2026

Revision Date
 03/02/2026

Revision #
 R1d



The Silver Spur
16' x 38' Side Utility Cabin w/Decks

This document is for illustrational purposes only (it has not been reviewed by an architect or engineer unless otherwise stated in or on this document) and should not be relied on for any purpose other than illustration and general layout of building.
Wolf Valley Buildings, LLC and affiliates assume no liability or responsibility for any mistakes, or errors herein.
All rights reserved by Wolf Valley Buildings, LLC. This document and the information contained herein are confidential and protected from disclosure pursuant to Federal law. Use, dissemination, or copying of this information is strictly prohibited. If you received this document in error, please erase all copies and attachments and notify the sender immediately.
Customer Responsible to verify all local, state, and any jurisdictional codes and building requirements.



WOLF VALLEY
BUILDINGS

3461 FM934
Itasca, TX 76055
www.wolfvalleybuildings.com

Original Doc. Date
01/08/2026

Revision Date
03/02/2026

Revision #
R1d

Room Dimensions

Page 8 of 8