



3D Drawing are for illustrational purposes only and do not represent the actually finishes and or fixtures.



The Winchester

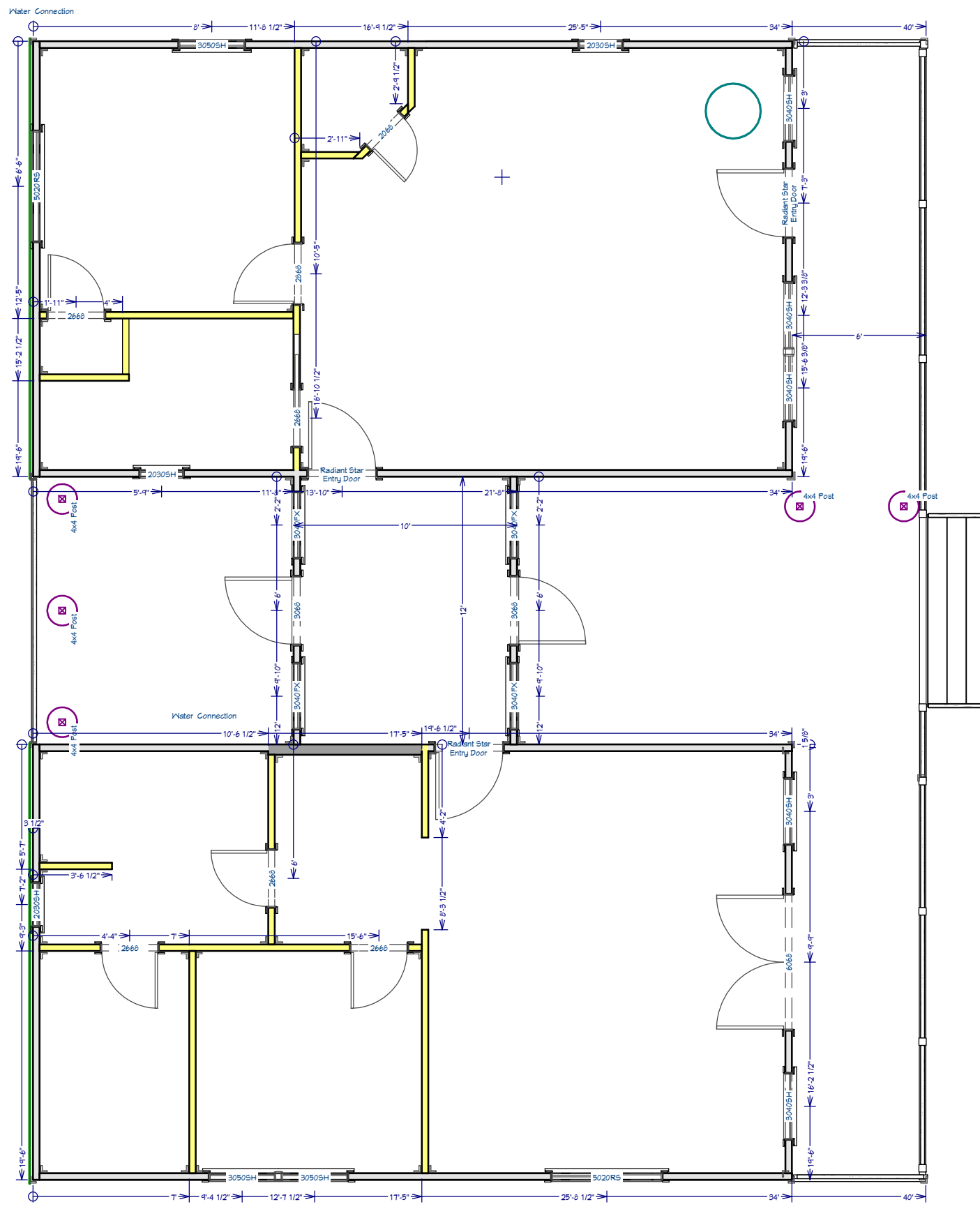
2 20' x 40' Cabins w/adjoining deck and breezeway.

This document is for illustrational purposes only (it has not been reviewed by an architect or engineer unless otherwise stated in or on this document) and should not be relied on for any purpose other than illustration and general layout of building.
 Wolf Valley Buildings, LLC and affiliates assume no liability or responsibility for any mistakes, or errors herein.
 All rights reserved by Wolf Valley Buildings, LLC. This document and the information contained herein are confidential and protected from disclosure pursuant to Federal law. Use, dissemination, or copying of this information is strictly prohibited. If you received this document in error, please erase all copies and attachments and notify the sender immediately.
 Customer Responsible to verify all local, state, and any jurisdictional codes and building requirements.



Original Doc. Date
01/30/2026
 Revision Date
02/04/2026
 Revision #
R1b

3D View
 Page 1 of 8



The Winchester

2 20' x 40' Cabins w/adjoining deck and breezeway.

This document is for illustrational purposes only (it has not been reviewed by an architect or engineer unless otherwise stated in or on this document) and should not be relied on for any purpose other than illustration and general layout of building.

Wolf Valley Buildings, LLC and affiliates assume no liability or responsibility for any mistakes, or errors herein.

All rights reserved by Wolf Valley Buildings, LLC. This document and the information contained herein are confidential and protected from disclosure pursuant to Federal law. Use, dissemination, or copying of this information is strictly prohibited. If you received this document in error, please erase all copies and attachments and notify the sender immediately.

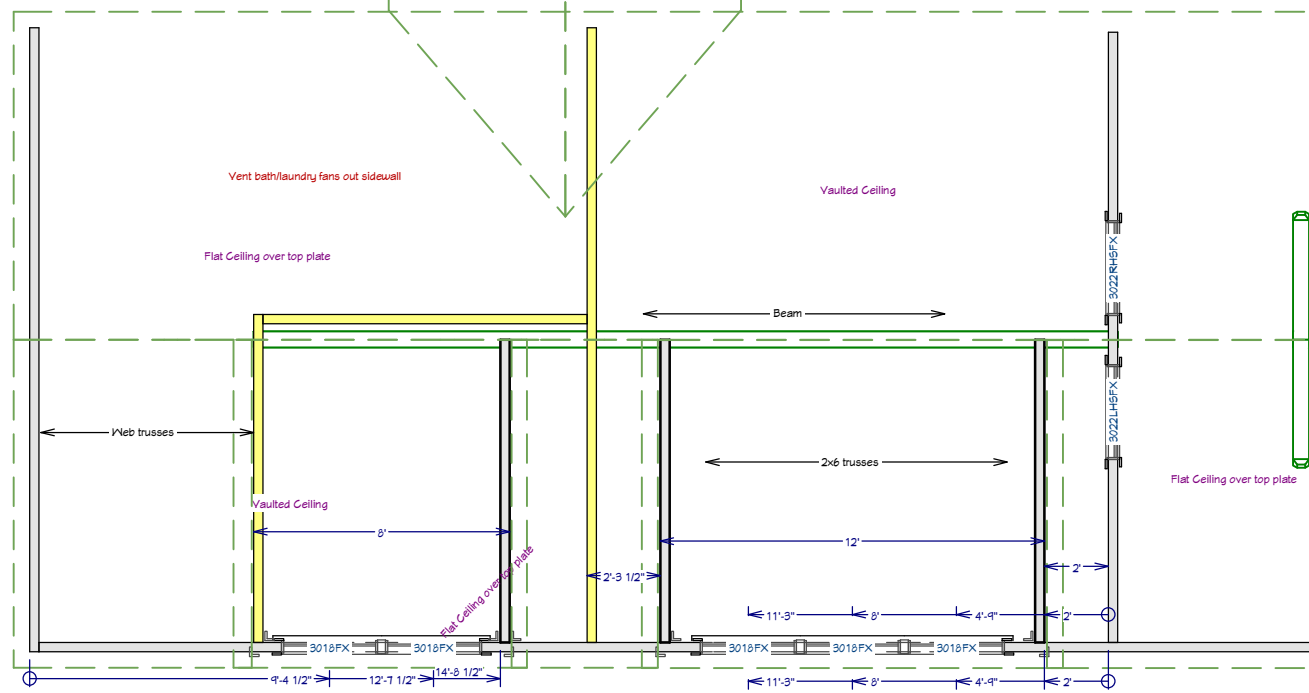
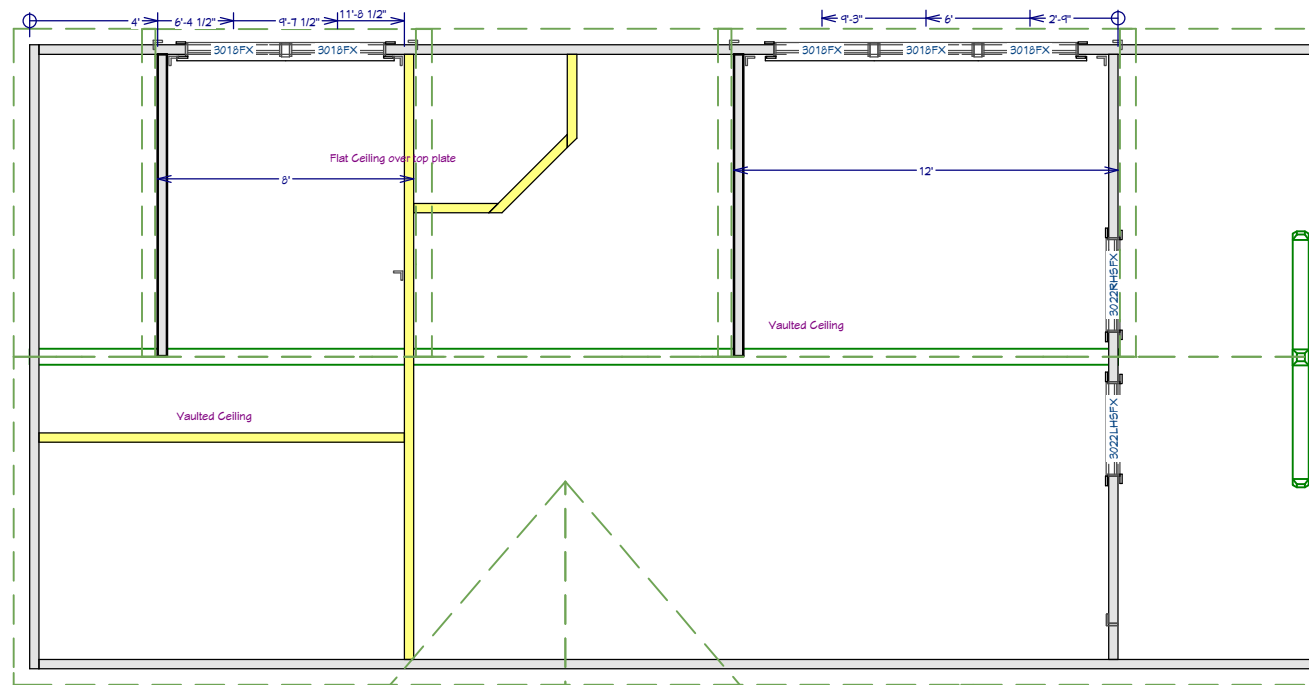
Customer Responsible to verify all local, state, and any jurisdictional codes and building requirements.



Original Doc. Date
01/30/2026

Revision Date
02/04/2026

Revision #
R1b

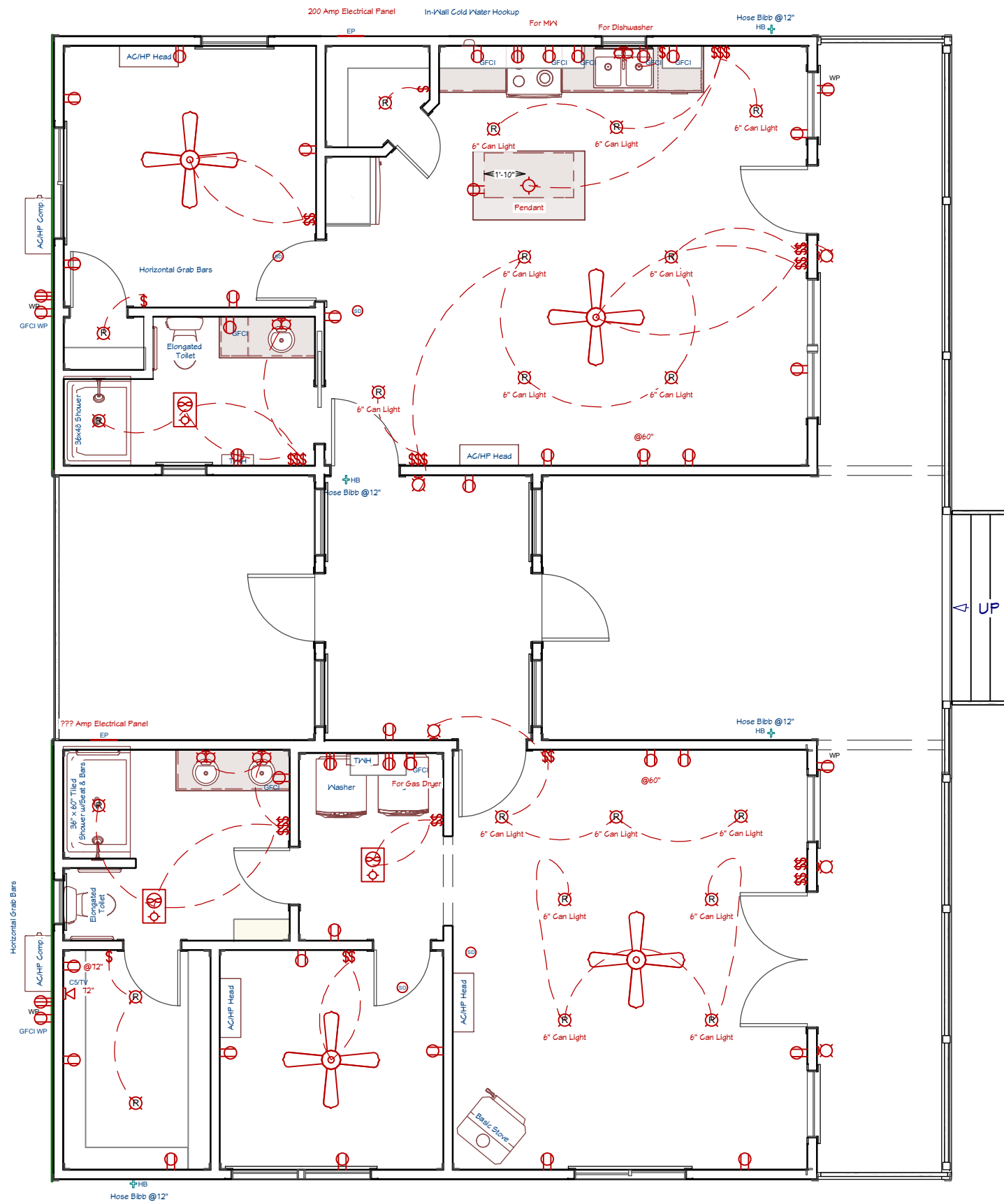


The Winchester
 2 20' x 40' Cabins w/adjoining deck and breezeway.

This document is for illustrational purposes only (it has not been reviewed by an architect or engineer unless otherwise stated in or on this document) and should not be relied on for any purpose other than illustration and general layout of building.
 Wolf Valley Buildings, LLC and affiliates assume no liability or responsibility for any mistakes, or errors herein.
 All rights reserved by Wolf Valley Buildings, LLC. This document and the information contained herein are confidential and protected from disclosure pursuant to Federal law. Use, dissemination, or copying of this information is strictly prohibited. If you received this document in error, please erase all copies and attachments and notify the sender immediately.
 Customer Responsible to verify all local, state, and any jurisdictional codes and building requirements.



Original Doc. Date
01/30/2026
 Revision Date
02/04/2026
 Revision #
R1b

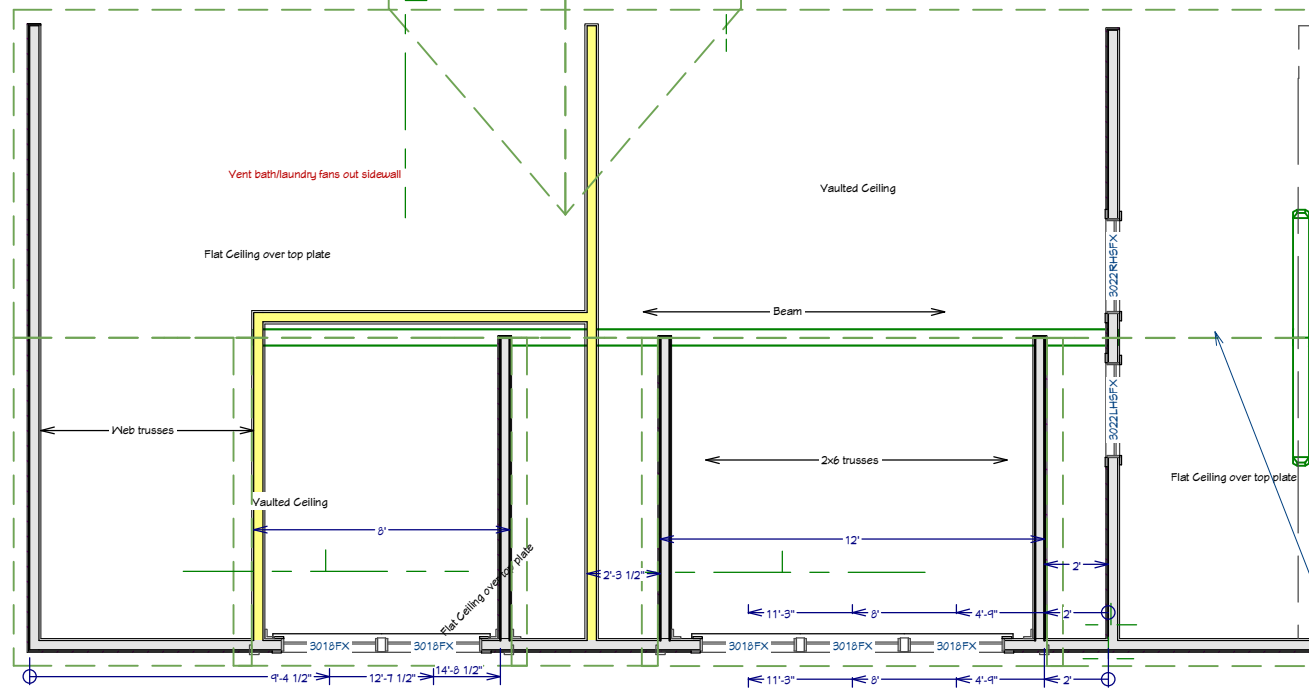
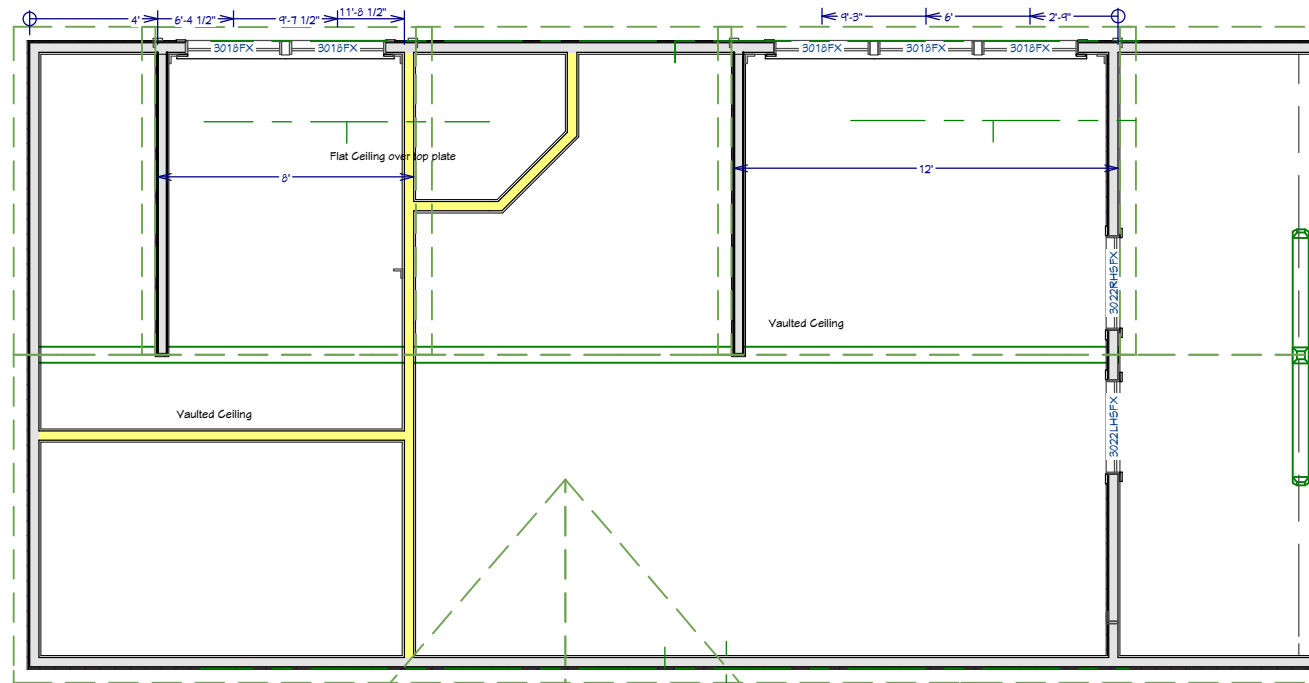


The Winchester
 2 20' x 40' Cabins w/adjoining deck and breezeway.

This document is for illustrative purposes only (it has not been reviewed by an architect or engineer unless otherwise stated in or on this document) and should not be relied on for any purpose other than illustration and general layout of building.
 Wolf Valley Buildings, LLC and affiliates assume no liability or responsibility for any mistakes, or errors herein.
 All rights reserved by Wolf Valley Buildings, LLC. This document and the information contained herein are confidential and protected from disclosure pursuant to Federal law. Use, dissemination, or copying of this information is strictly prohibited. If you received this document in error, please erase all copies and attachments and notify the sender immediately.
 Customer Responsible to verify all local, state, and any jurisdictional codes and building requirements.



Original Doc. Date
01/30/2026
 Revision Date
02/04/2026
 Revision #
R1b



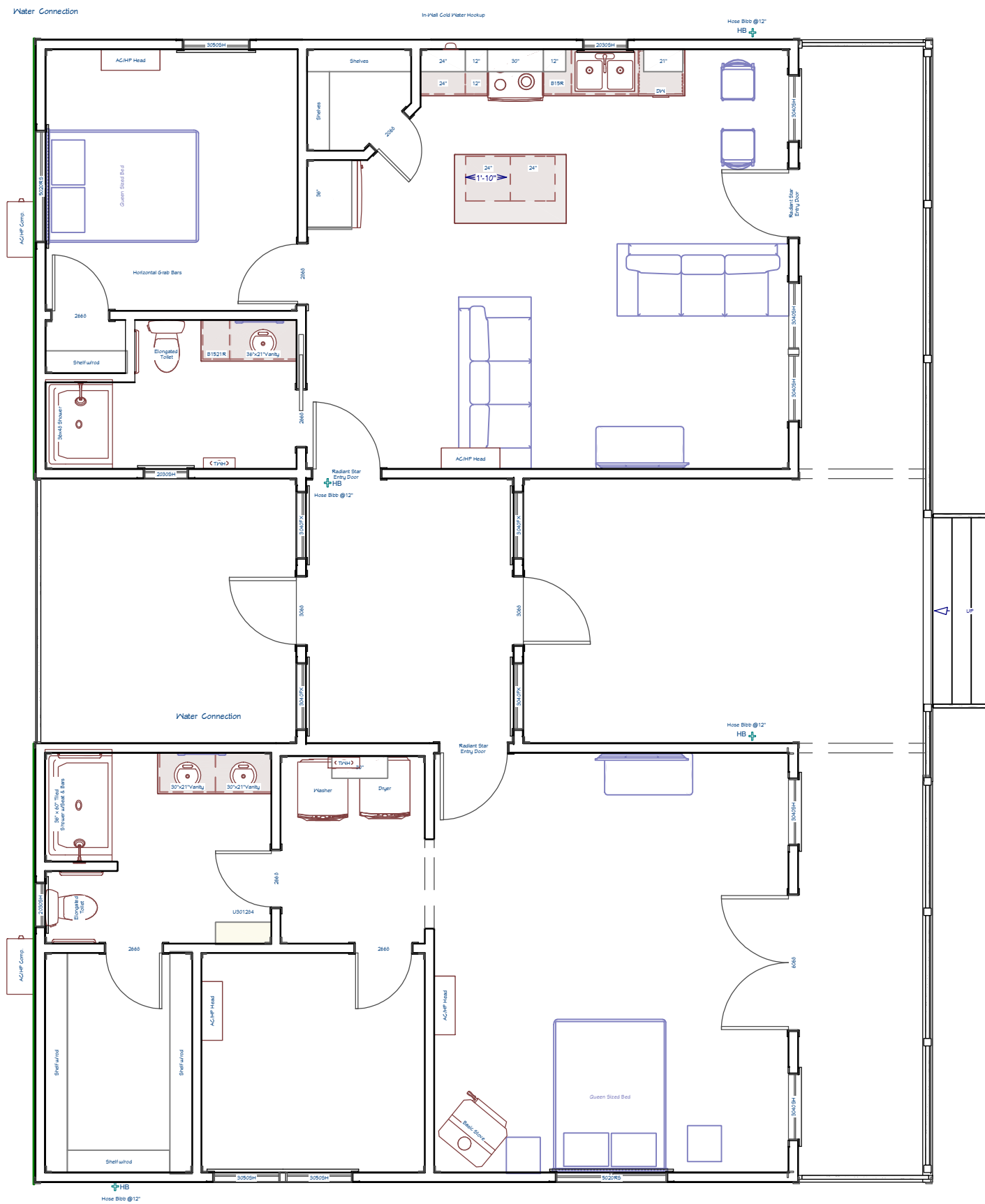
The Winchester
 2 20' x 40' Cabins w/adjoining deck and breezeway.

This document is for illustrational purposes only (it has not been reviewed by an architect or engineer unless otherwise stated in or on this document) and should not be relied on for any purpose other than illustration and general layout of building.
 Wolf Valley Buildings, LLC and affiliates assume no liability or responsibility for any mistakes, or errors herein.
 All rights reserved by Wolf Valley Buildings, LLC. This document and the information contained herein are confidential and protected from disclosure pursuant to Federal law. Use, dissemination, or copying of this information is strictly prohibited. If you received this document in error, please erase all copies and attachments and notify the sender immediately.
 Customer Responsible to verify all local, state, and any jurisdictional codes and building requirements.



Original Doc. Date
 01/30/2026
 Revision #
 1
 Revision Date
 02/04/2026
 All Rafters to tie into beam - NOT resting on top of beam.

Cabinet Instructions:
TBD



The Winchester
2 20' x 40' Cabins w/adjoining deck and breezeway.

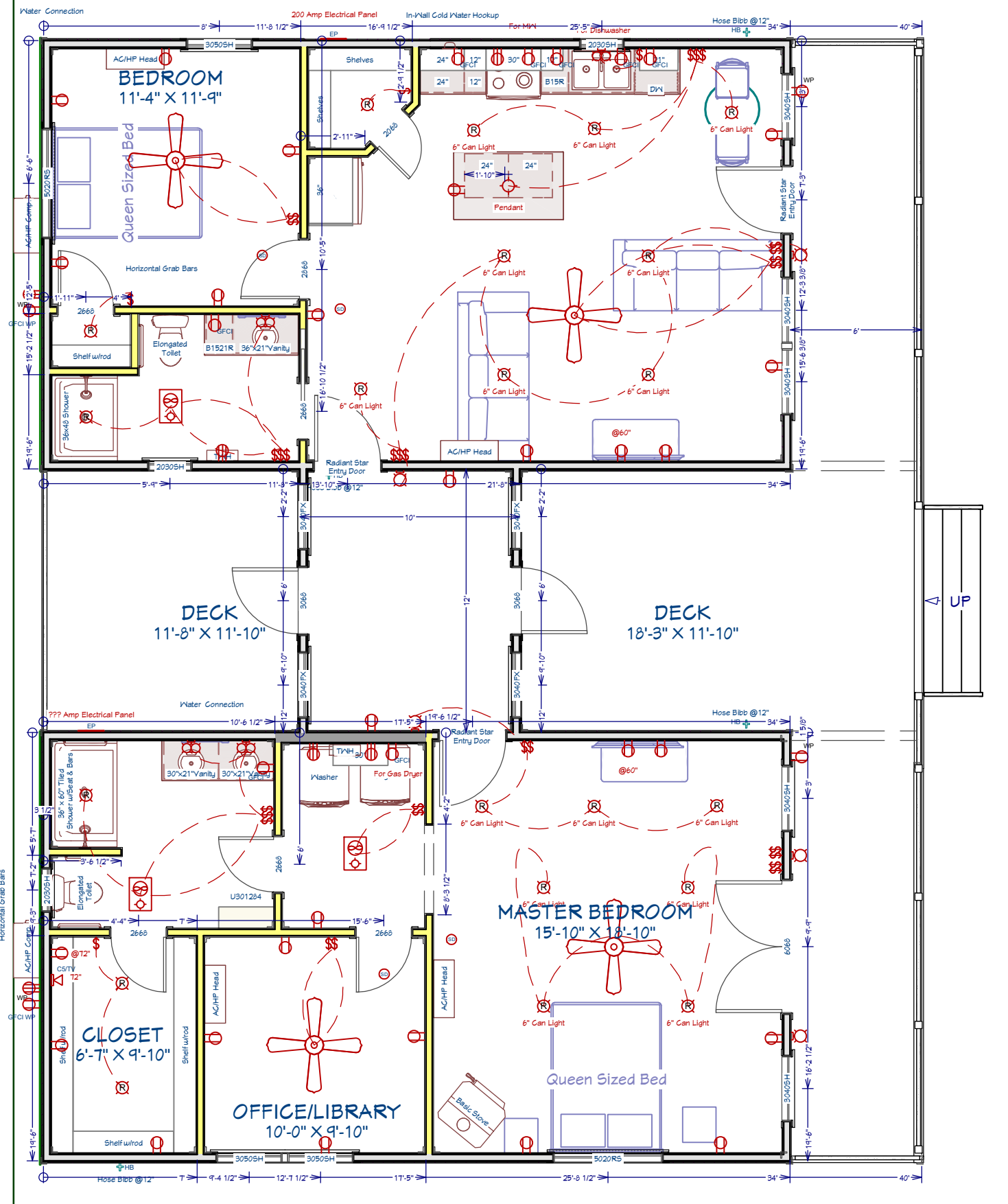
This document is for illustrational purposes only (it has not been reviewed by an architect or engineer unless otherwise stated in or on this document) and should not be relied on for any purpose other than illustration and general layout of building.
Wolf Valley Buildings, LLC and affiliates assume no liability or responsibility for any mistakes, or errors herein.
All rights reserved by Wolf Valley Buildings, LLC. This document and the information contained herein are confidential and protected from disclosure pursuant to Federal law. Use, dissemination, or copying of this information is strictly prohibited. If you received this document in error, please erase all copies and attachments and notify the sender immediately.
Customer Responsible to verify all local, state, and any jurisdictional codes and building requirements.



Original Doc. Date
01/30/2026
Revision Date
02/04/2026
Revision #
R1b

Cabinets, Kitchen, & Bath
Page 6 of 8

Appliances, fixtures, and furniture are for visual and spatial purposes *ONLY*. They are not included in the construction of this building.



The Winchester
 2 20' x 40' Cabins w/adjoining deck and breezeway.

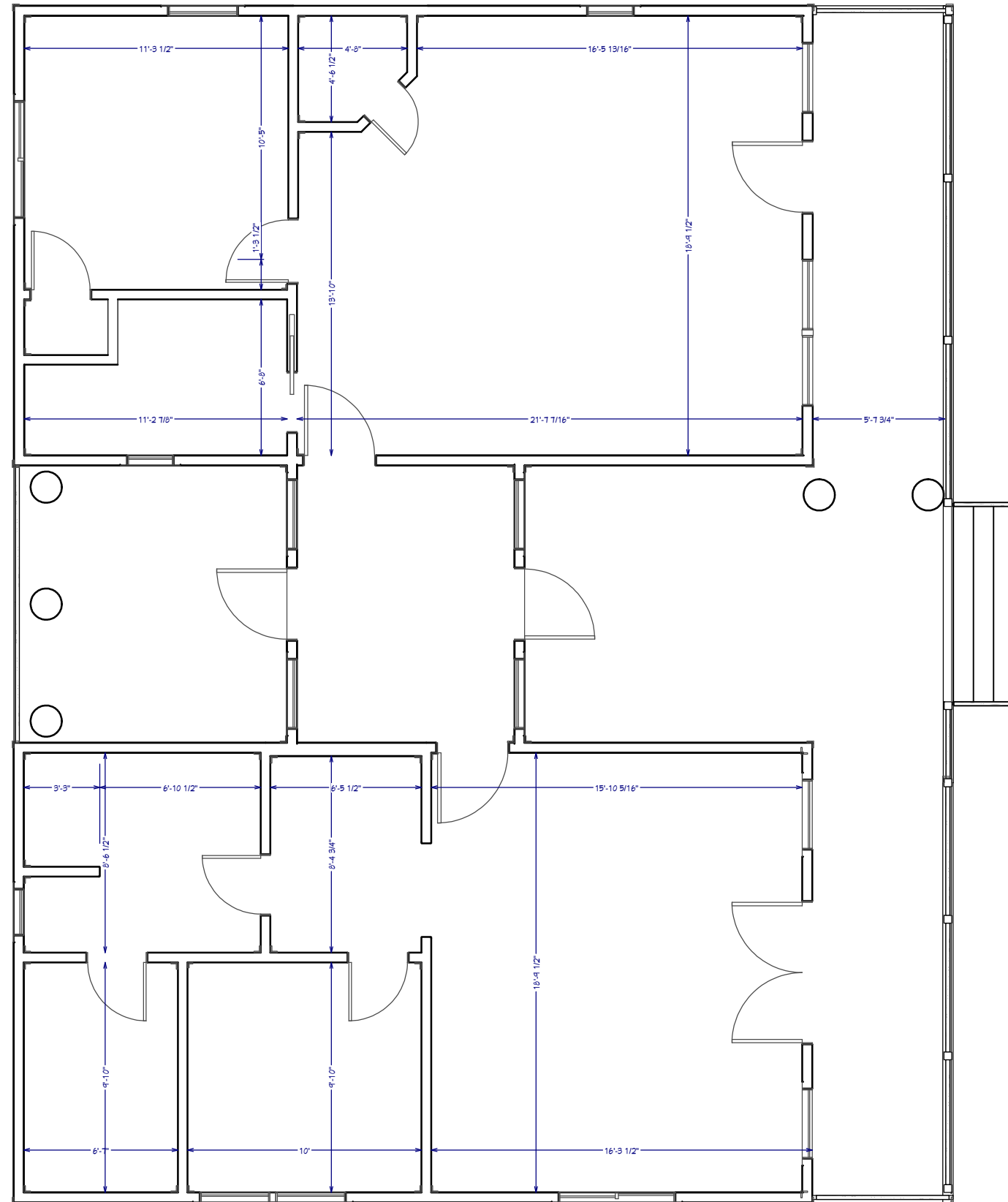
This document is for illustrational purposes only (it has not been reviewed by an architect or engineer unless otherwise stated in or on this document) and should not be relied on for any purpose other than illustration and general layout of building.
 Wolf Valley Buildings, LLC and affiliates assume no liability or responsibility for any mistakes, or errors herein.
 All rights reserved by Wolf Valley Buildings, LLC. This document and the information contained herein are confidential and protected from disclosure pursuant to Federal law. Use, dissemination, or copying of this information is strictly prohibited. If you received this document in error, please erase all copies and attachments and notify the sender immediately.
 Customer Responsible to verify all local, state, and any jurisdictional codes and building requirements.



Original Doc. Date 01/30/2026
 Revision Date 02/04/2026
 Revision # R1b

All Layers
 Page 7 of 8

Room dimension measurements are approximate only. All floor plan measurements override these measurements. These measurements may differ 1-4" depending on wall coverings, trims, etc.



The Winchester

2 20' x 40' Cabins w/adjoining deck and breezeway.

This document is for illustrative purposes only. It has not been reviewed by an architect or engineer unless otherwise stated in or on this document and should not be relied on for any purpose other than illustration and general layout of building.
 Wolf Valley Buildings, LLC and affiliates assume no liability or responsibility for any mistakes, or errors herein.
 All rights reserved by Wolf Valley Buildings, LLC. This document and the information contained herein are confidential and protected from disclosure pursuant to Federal law. Use, dissemination, or copying of this information is strictly prohibited. If you received this document in error, please erase all copies and attachments and notify the sender immediately.
 Customer Responsible to verify all local, state, and any jurisdictional codes and building requirements.



Original Doc. Date
01/30/2026
 Revision Date
02/04/2026
 Revision #
R1b

Room Dimensions

Page 8 of 8